

MICRO SWITCH

A DIVISION OF HONEYWELL INTERNATIONAL COMPANY
HARTFORD, CONNECTICUT

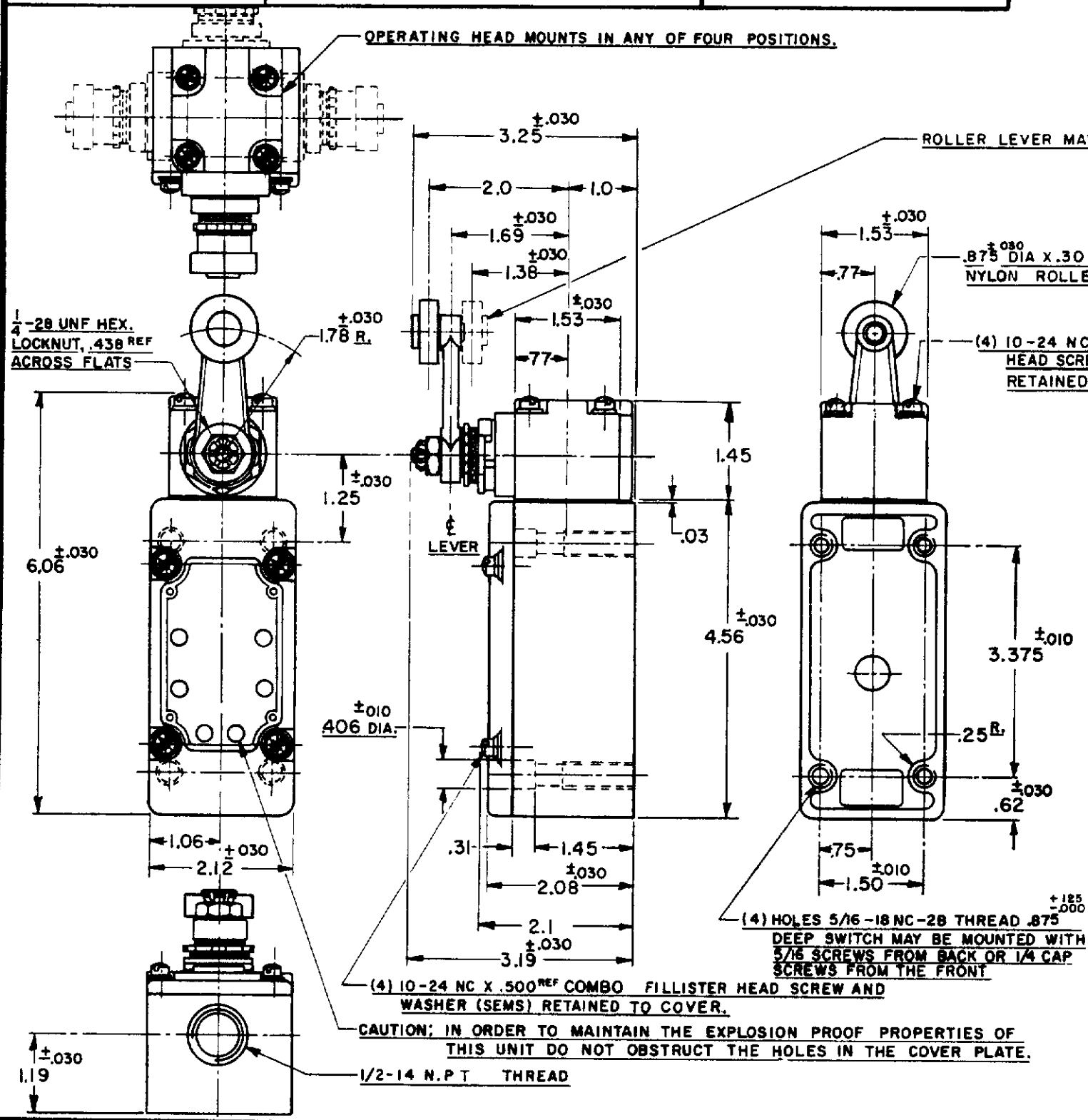
SWITCH - ENCLOSED

CATALOG LISTING
151ML1-E1

THIS DRAWING COVERS A PROPRIETARY ITEM AND IS THE PROPERTY OF MICRO SWITCH A DIVISION OF HONEYWELL THIS DRAWING IS NOT TO BE COPIED OR USED WITHOUT THE APPROVAL OF MICRO SWITCH

M

M 151ML1-E1	REPLACES	RELEASE NO. SR 7259
	DRAWING NUMBER	8 FEB. 58
	ISSUE	B
REVISIONS A CORR 21 FEB. 58 B COI2789 M.B.F. 15 MAY 58 C COI3022 M.B.F. 19 AUG. 58 D COI3487 M.B.F. 10 MAR 59 E COI8841 M.B.F. 3 DEC 64 F CO20878 M.B.F. 1 DEC 65 G CO24575 M.B.S. 10 SEP 68 H CO2194-D Y.S.K. 26 SEPT 63 J CO38367 J.A.S. 12 NOV 65 K CO355051 C L CO 63739 M CO74287 N		



NOTES

1 - LISTED BY UNDERWRITERS LABORATORY, INC. FOR USE IN CLASS 1, GROUPS C AND D VAPOR - AIR ATMOSPHERE, AND CLASS 2 GROUPS E, F AND G DUST - AIR ATMOSPHERES

2 SWITCH IS ASSEMBLED FOR ACTUATION IN EITHER DIRECTION TO CONVERT SWITCH FOR ACTUATION EITHER CLOCKWISE OR COUNTER-CLOCKWISE DIRECTION ONLY, REMOVE THE HEAD AND SLIDE THE CAM TOWARD THE REAR OF THE HEAD SUFFICIENTLY TO DISENGAGE FROM THE FLATS ON THE SHAFT. ROTATE THE CAM 90° IN THE OPPOSITE DIRECTION OF THE ACTUATION DESIRED AND RE-ENGAGE THE CAM WITH THE FLATS ON THE SHAFT

3 - LEVER MAY BE POSITIVELY LOCKED AT INTERVALS OF APPROX 0.4° (870 POSITIONS)

4 - LEVER MAY BE ADJUSTED TO ACTUATE THE SWITCH IN THE CLOCKWISE DIRECTION ONLY, THE COUNTER-CLOCKWISE DIRECTION ONLY, OR IN BOTH DIRECTIONS

5 - IT IS ESSENTIAL THAT THE CONDUIT OPENING BE PROPERLY SEALED IN ORDER TO MAINTAIN THE EXPLOSION PROOF PROPERTIES

CHARACTERISTICS	ELECTRICAL DATA	SCALE 1/2 TO 1
OPERATING FORCE --- 3 LBS. MAX. FULL OVERTRAVEL FORCE --- (A) - 4 LBS. MAX. RELEASE FORCE --- 1/4 LB. MIN. PRETRAVEL --- (3) - 15° MAX. DIFFERENTIAL TRAVEL --- (4) - 7° MAX. OVERTRAVEL --- (5) - 60° MIN. SWITCH-BASIC REPLACEMENT --- 1 MN1	CONTACT ARRANGEMENT TWO CIRCUIT DOUBLE THROW DOUBLE BREAK 10A-120, 240, OR 480 VAC, 1/2 H.P.-120 VAC 1 H.P.-240 VAC, 0.8 A-115 VDC, 0.4 A-230 VDC PILOT DUTY, 720 VA HEAVY DUTY 600 VAC MAX	DO NOT SCALE PRINT UNLESS OTHERWISE SPECIFIED DIMENSIONS ARE IN INCHES TOLERANCES ARE. ONE PLACE (.0) $\pm .030$ TWO PLACE (.00) $\pm .018$ THREE PLACE (.000) $\pm .008$ ANGLES \pm WEIGHT

