

5.6 x 5.0mm Compact Tactile Switch

Features

Optimized Mechanical Features

- Surface mount gull wing terminal configuration
- Compatible with IR reflow and manual soldering
- Variety of operating force options

Optimized Contact System

- Excellent tactile feedback

Materials

- Silver coated terminals for better solderability
- High temperature materials (UL94V-0)
- RoHS compliant



Electrical and Mechanical Specifications

Switch Contact Resistance

500 milliohms maximum

Insulation Resistance

100 Megohms minimum between terminals

Maximum Rating

50mA, 12 VDC

Dielectric Strength

250 VAC for 1 minute between adjacent terminals

Operating Force

180, 220, or 350gf

Travel

0.2 mm

Operating Temperature

- 40°C to +85°C

Storage Temperature

- 40°C to +85°C

Actuator Strength

3 Kgf maximum

Actuation Life

50,000 cycles

Allowable Solder Time

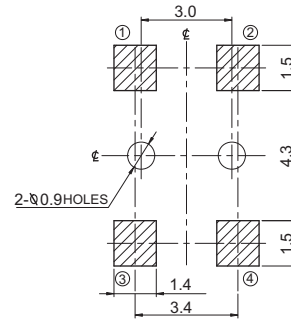
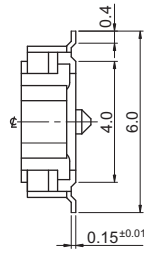
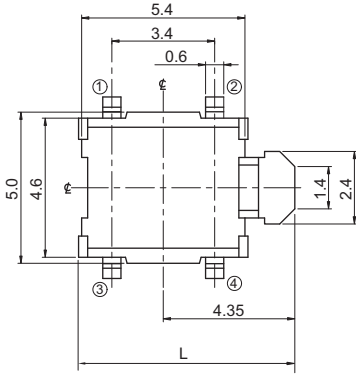
IR Reflow: Up to 5 seconds at 260°C.

Manual soldering: Up to 3 seconds at 350°C

Packaging

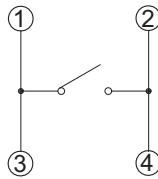
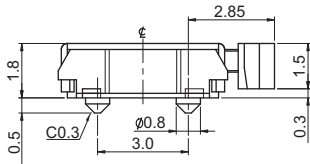
- Standard: Tape and reel packaging with
- 330mm diameter reel and 12mm wide plastic tape - for Surface mount gull wing type1
 - 330mm diameter reel and 16mm wide plastic tape - for Surface mount gull wing type2

CTS SERIES 223DM1SA...RB- Surface Mount Gull Wing Type1, With Boss



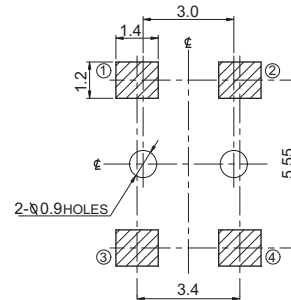
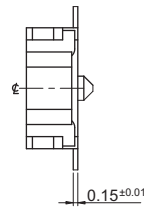
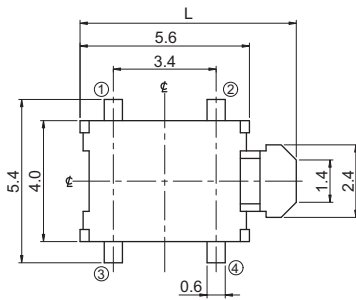
CIRCUIT DIAGRAM

PCB LAYOUT



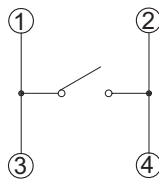
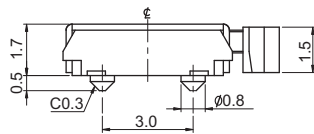
DIMENSION : mm
STANDARD TOLERANCE :
.X (1 PLACE) : ±0.2

CTS SERIES 223DM2SA...RB - Surface Mount Gull Wing Type2, With Boss



CIRCUIT DIAGRAM

PCB LAYOUT



DIMENSION : mm
STANDARD TOLERANCE :
.X (1 PLACE) : ±0.2

Ordering Information

223D - M1 S A A R B

Termination
M1: SURFACE MOUNT GULL WING TYPE 1
M2: SURFACE MOUNT GULL WING TYPE 2

Actuating Direction
S: SIDE

Actuator Length "L"
A: 7.05mm (GULL WING TYPE 1)
B: 7.15mm (GULL WING TYPE 2)

Actuator Force

	A	B	C
	180gf	220gf	350gf
223DM1SA	☆		☆
223DM2SB		☆	

Packaging
R: TAPE & REEL PACKAGING

Boss
B: WITH BOSS
*BLANK: NO BOSS
**"BLANK" option is only available for 223DM2