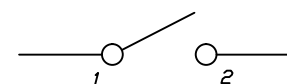
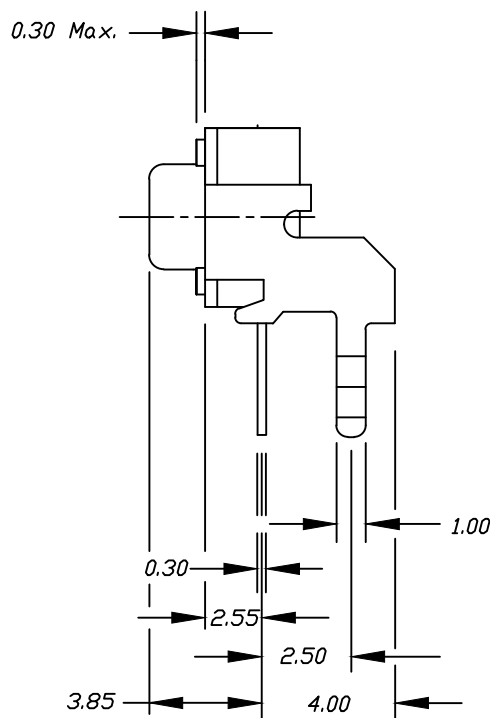
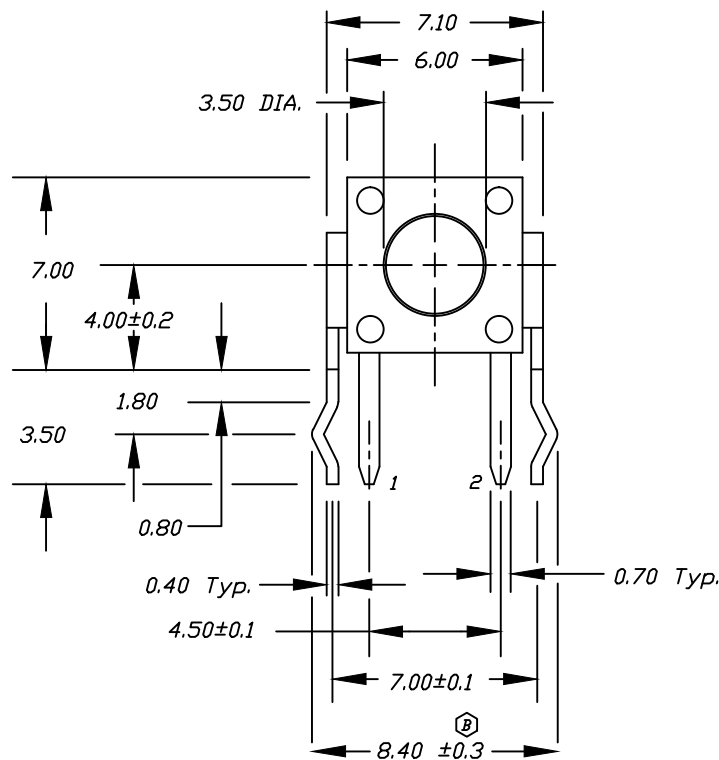


RECOMMEND P.C.B. LAYOUT



CIRCUIT: SPST
CONTACT CONFIGURATION



NOTES:

1. ALL DIMENSIONS IN MM
2. TERM. NOS. FOR REF ONLY
3. RATING: 50mA, 12V DC
4. 2002/95/EC (ROHS) COMPLIANT

B	18677	LEG TOLERANCE WAS +/-0.1	10/9/09	BLR	TITLE TL 1105V F160 Q						
A		RELEASED FOR PRODUCTION	11/10/97	MM							
REV.	PCR	DESCRIPTION	DATE	CHKD	SCALE 4:1		DATE 10/9/09	DR BLR	DWG P010309	REV B	
THE INFORMATION CONTAINED IN THIS DOCUMENT IS PROPRIETARY TO E-SWITCH AND IS NOT TO BE COPIED OR TRANSFERRED					TOLERANCES	0.0	±0.4	±0.25			