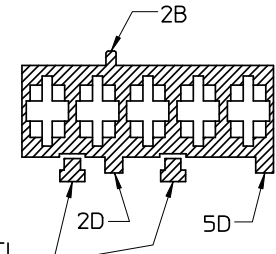
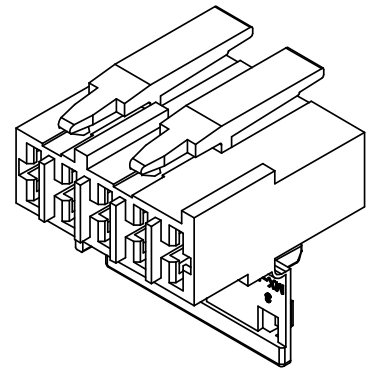


Dettaglio1
SCALA 5:1

CONFIGURAZIONE POLARIZZAZIONI
POLARIZATION CONFIGURATION

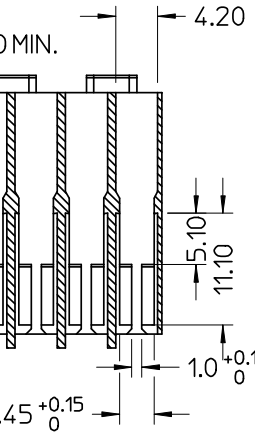
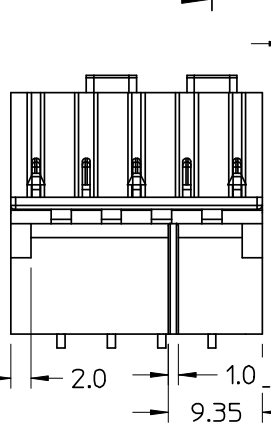


AGGANCI
LATCHES
SEZ: C-C

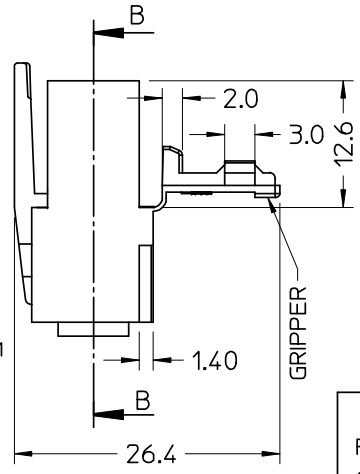


- NOTE:
- USATO CON TERMINALE 94518-0XXX E 94549-0XXX
 - SPECIFICA DI RIFERIMENTO PER IL CONNETTORE PS-94550-001
 - PER CARATTERISTICHE DI CRIMPATURA RIF. SD-94518-005 E SD-94549-001
 - FORZA DI DISACCOPIAMENTO CONNETTORE (TRAZIONANDO DAI CAVI SENZA AZIONARE L'AGGANCI): 60 N MIN.
 - SPESSORE MIN. PARETI CONNETTORE 0.40 mm.

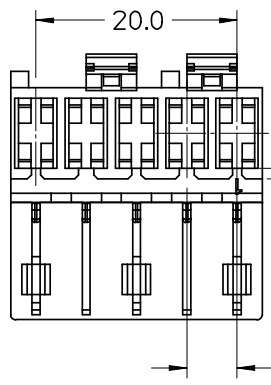
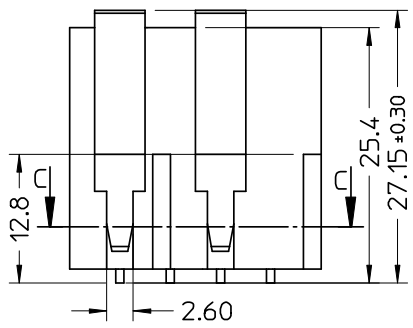
- NOTE:
- USED WITH TERMINALS 94518-0XXX AND 94549-0XXX
 - REFER TO PS-94550-001 FOR CONNECTOR SPECIFICATION
 - REFER TO SD-94518-005 AND SD-94549-001 FOR CRIMPING CHARACTERISTICS
 - CONNECTOR DISENGAGEMENT FORCE (PULLING BY THE WIRES, WITHOUT ACTUATING THE LATCH): 60 N MIN.
 - MINIMUM CONNECTOR WALL THICKNESS 0.40 mm.
- CONFEZIONE: Box da 1300 Pz.
PACKAGING: 1300 pcs in carton box



SEZ: B-B



* AGENCY
RECOGNIZATIONS
CSA (file LR19980)
UL (file E-29179)



SPQ =1300

Std. Descr: "HSG W/SEC LOCK AND EXT LATCHES 5 CKT _____ COLOR"

| | | | | | | | |
|---|-----------------------------------|--|-------------------------|---|--------------------------|--|------------------|
| EC NO: Z2006-0056 DRWN: FGOTTARD 2005/10/14 CHKD: RSANDANI 2005/10/14 APPR: GZUIN 2005/10/17 | QUALITY SYMBOLS ▽ = 0 ▽ = 0 | GENERAL TOLERANCES (UNLESS SPECIFIED) | | SCALE 2:1 | DESIGN UNITS METRIC | FIRST ANGLE PROJECTION REVISE ON CAD ONLY | |
| | | 4 PLACES ± --- ± --- 3 PLACES ± --- ± --- 2 PLACES ± 0.10 ± --- 1 PLACE ± 0.2 ± --- | DIMENSION STYLE MM ONLY | TITLE HSG 5 CKT WITH SEC. LOCK AND EXTERNAL LATCH | | | |
| | | ANGULAR ± 2 ° | | DRAWN BY DATE FGOTTARD 2002/06/27 | MOLEX MOLEX INCORPORATED | | |
| | | DRAFT WHERE APPLICABLE MUST REMAIN WITHIN DIMENSIONS | | CHECKED BY DATE MTESTAGU 2002/06/27 | MATERIAL NO. 94550-9005 | DOCUMENT NO. SD-94550-004 | SHEET NO. 1 OF 1 |

| P/N | MATERIAL/COLOR |
|-------------|--|
| *94550-9005 | NYLON 6.6 V0 NATURAL |
| 94550-4005 | NYLON 6.6 GWT 750 °C sec. IEC 60335-1 TEST METHOD IEC 60695-2-11 NATURAL |