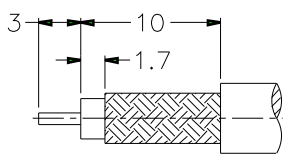


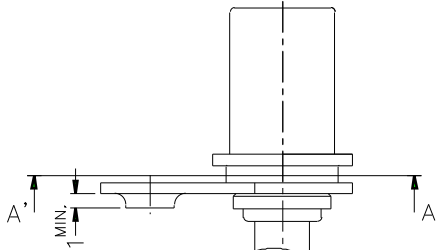
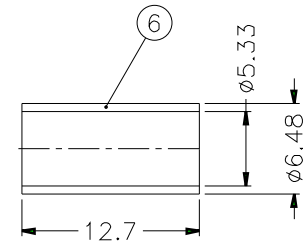
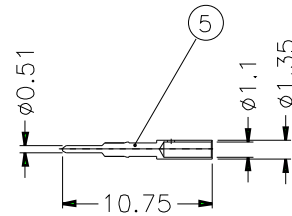
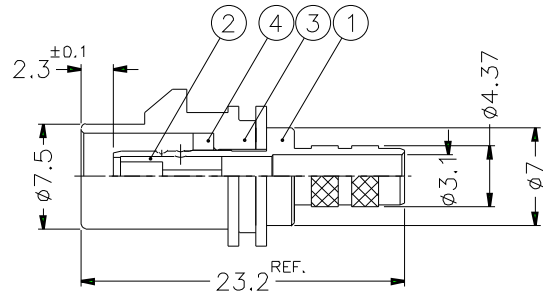
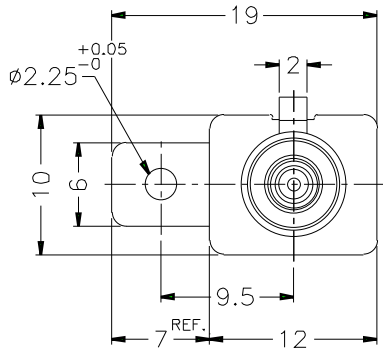
REVISIONS		
ISS	ZONE	DESCRIPTION\PER REQUEST\DATE

CONFIGURATION CONTROL:
NO CHANGES PERMITTED TO DRAWING WITHOUT
PPAP QUALIFIED CUSTOMER APPROVAL



RECOMMENDED
CABLE STRIPPING DIM'S

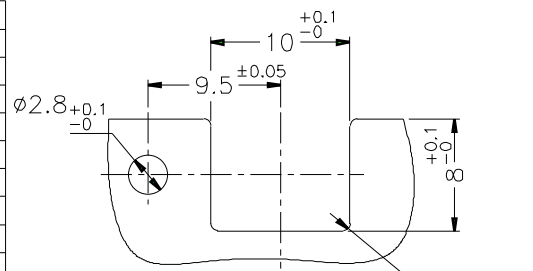
1. CRIMPED FERRULE
HEX CRIMP SIZE .213"
2. CRIMPED CONTACT PIN
SQ. CRIMP SIZE .042"



- NOTES: FINISH (PLATING THICKNESS IN MICRO-INCHES)
1. BRASS PER QQ-B-626, ALLOY 360, 1/2 H ; JIS H3250 C 3604BD OR EQUIVALENT
 2. NICKEL PL. 60 MIN. THICK OVER COPPER STRIKE
 3. GOLD PL. 30 MIN. THICK OVER NICKEL PL. 100 MIN. THICK OVER COPPER STRIKE
 4. TEFLON MIL-P-19468 OR EQUIVALENT
 5. COPPER PER ASTM B-75 ALLOY C12200 OR EQUIVALENT
 6. PBT(WITH 15% GLASS FIBER) PER CHANG CHUN GRADE 4115202 OR EQUIVALENT

TABLE

KEY CODING	D/N	P/N	LOCK COVER
A	FK1321AW-008-NT30G-50	FA1-NASP-C04-0	FKLC10201A
B	FK1321BW-008-NT30G-50	FA1-NBSP-C04-0	FKLC10202A
C	FK1321CW-008-NT30G-50	FA1-NCSP-C04-0	FKLC10203A
D	FK1321DW-008-NT30G-50	FA1-NDSP-C04-0	FKLC10204A
E	FK1321EW-008-NT30G-50	FA1-NESP-C04-0	FKLC10205A
F	FK1321FW-008-NT30G-50	FA1-NFSP-C04-0	FKLC10206A
G	FK1321GW-008-NT30G-50	FA1-NGSP-C04-0	FKLC10207A
H	FK1321HW-008-NT30G-50	FA1-NHSP-C04-0	FKLC10208A
I	FK1321IW-008-NT30G-50	FA1-NISP-C04-0	FKLC10209A
K	FK1321KW-008-NT30G-50	FA1-NKSP-C04-0	FKLC10210A
Z	FK1321ZW-008-NT30G-50	FA1-NZSP-C04-0	FKLC10211A



RECOMMENDED
MOUNTING HOLE

NO.	DESCRIPTION	MATERIAL	FINISH	Q'TY	DRAWING NO.
6	FERRULE	NOTE 5	NOTE 2	1	FKFR00201A
5	CONTACT PIN	NOTE 1	NOTE 3	1	FKCP00301A
4	RING	NOTE 1	NOTE 2	1	FKLR00101A
3	LOCK COVER	NOTE 6		1	SEE TABLE
2	INSULATOR	NOTE 4	NATURAL	1	FKNS00401A
1	MAIN BODY	NOTE 1	NOTE 2	1	FKMB00201A

DIMENSIONS ARE IN MILLIMETERS			
UNLESS OTHERWISE SPECIFIED	TOLERANCES		
0.5-6	= ±0.2		
6-30	= ±0.4		
30-120	= ±0.6		
120-315	= ±1		
315-1000	= ±1.6		
1000-2000	= ±2.4		

PART NO.	
FA1-NXSP-C04-0	
APPROVED	DATE
	09-25-01'
CHECKED	DATE
	09-25-01'
DRAWN	DATE
ANGELA	09-25-01'

Amphenol
Danbury,CT,USA-Tainan,Taiwan-Shenzhen,China

TITLE
FAKRA SMB CRIMP PLUG
(FOR RG-58A/U, 58C/U CABLE)

DRAWING NO.
KJ-FK1321XX-008-NT30G-50

FILE NO. F:\DWG\FK\FA1\NXSP\C04\0