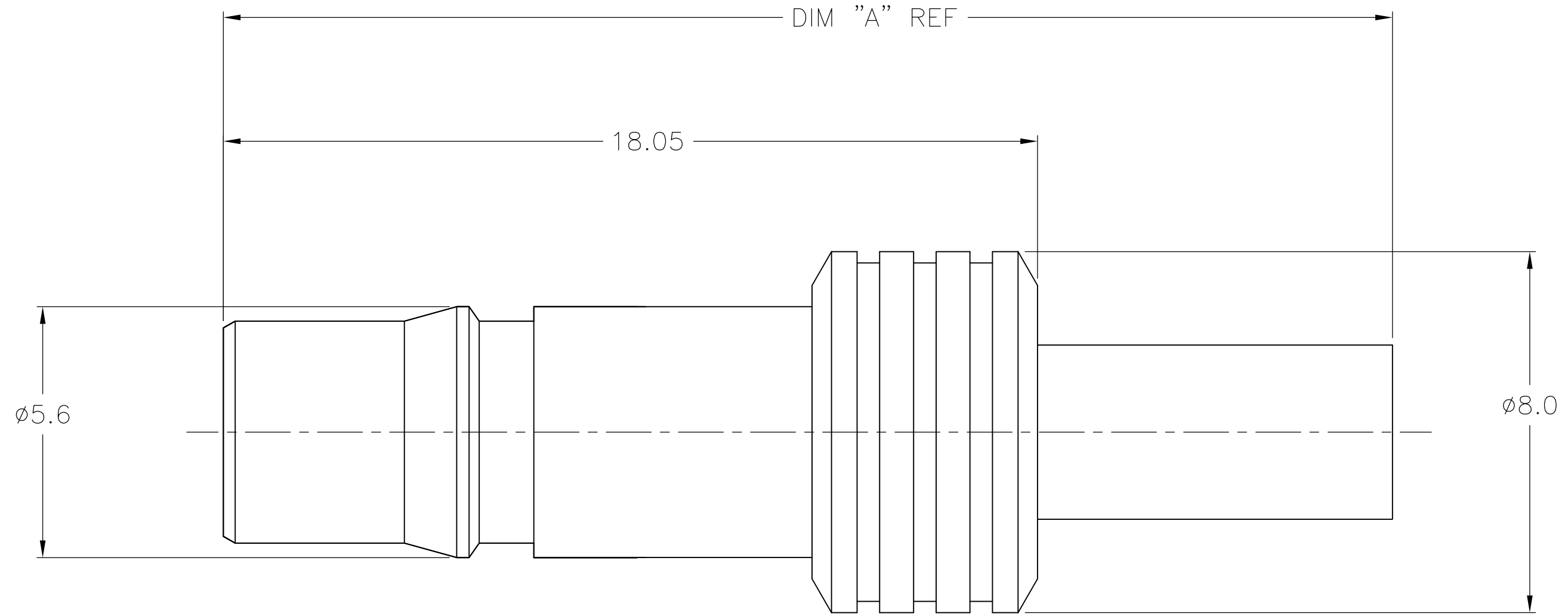


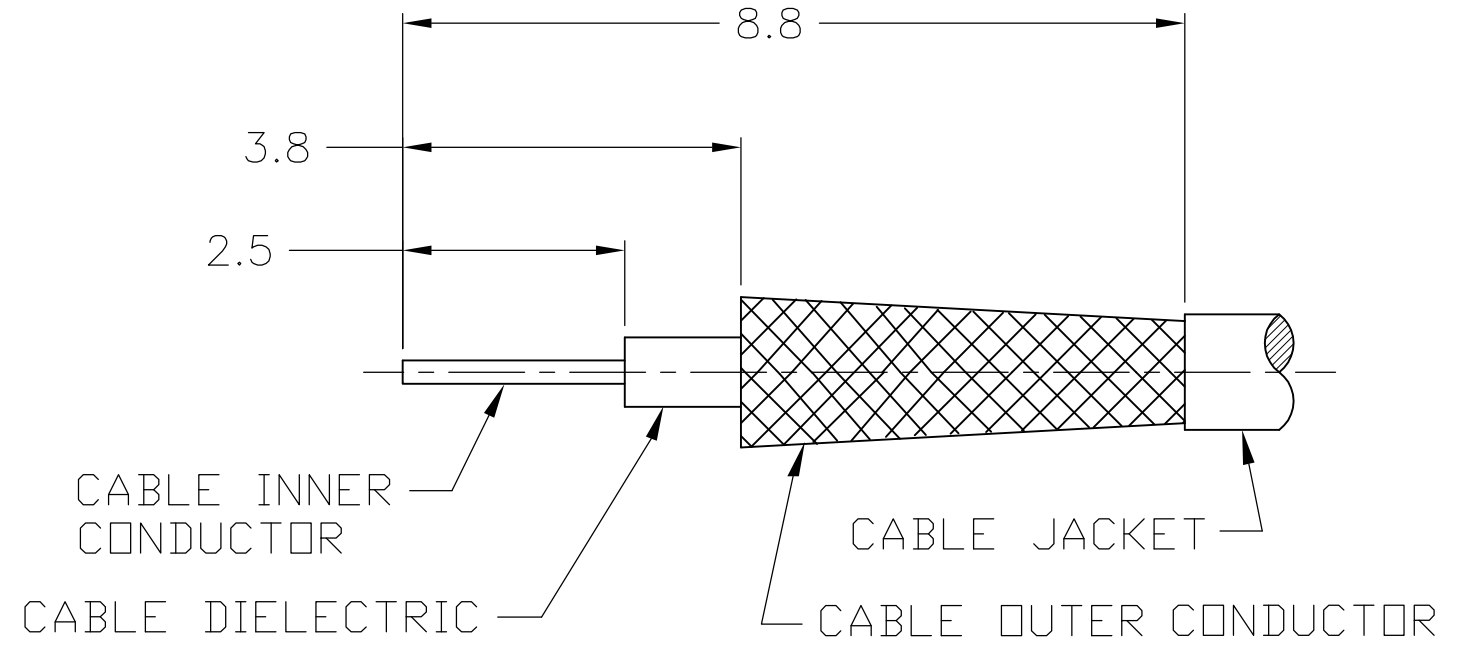
THIS DRAWING IS UNPUBLISHED. RELEASED FOR PUBLICATION
 © COPYRIGHT BY TYCO ELECTRONICS CORPORATION. ALL RIGHTS RESERVED.

| LOC | DIST | REVISIONS | | | |
|-----|------|---------------------------|----------|-----|------|
| P | LTR | DESCRIPTION | DATE | DWN | APVD |
| AJ | 16 | | | | |
| | A | REVISED PER ECO-08-000700 | 2/5/2008 | DW | BW |
| | A1 | REVISED PER ECO-09-024927 | 07NOV09 | KK | AEG |

- 1. CRIMP FERRULE USING CRIMP DIE HEX SIZE SPECIFIED IN TABLE.
- 2. SINGLE PACKED
- 3. BULK PACKED IN QUANTITIES OF 100
- 4. ASSEMBLE TO CABLE USING IS SHEET 408-8900
- 5. OBSOLETE PARTS; OBSOLETE CIS STREAMLINING PER D.RENAUD/D.SINISI



CABLE PREPARATION SCALE: NTS



| 5 | OBSOLETE | 3 | 28.2 | 5.41 | RG58/U, 141, 303 & SF142 | 1408411-8 | 9-446556-2 | 1408448-2 | 1408338-8 |
|---|----------|------|-------|------|--------------------------|-----------|-------------|-----------|-----------|
| | | 2 | 28.2 | 5.41 | RG58/U, 141, 303 & SF142 | 1408411-8 | 9-446556-2 | 1408448-2 | 1408338-7 |
| | | 3 | 28.2 | 5.41 | RG55/U, 142, 223 & 400 | 1408411-8 | 2-1403102-5 | 1408448-2 | 1408338-6 |
| | | 2 | 28.2 | 5.41 | RG55/U, 142, 223 & 400 | 1408411-8 | 2-1403102-5 | 1408448-2 | 1408338-5 |
| | | 3 | 25.9 | 3.83 | RD316/U | 1408411-4 | 2-413889-7 | 1408448-1 | 1408338-4 |
| | | 2 | 25.9 | 3.83 | RD316/U | 1408411-4 | 2-413889-7 | 1408448-1 | 1408338-3 |
| | | 3 | 25.9 | 3.25 | RG316/U, 174 & 188 | 1408411-4 | 2-413889-4 | 1408448-1 | 1408338-2 |
| | | 2 | 25.9 | 3.25 | RG316/U, 174 & 188 | 1408411-4 | 2-413889-4 | 1408448-1 | 1408338-1 |
| | | PACK | DIM A | HEX | CABLE | CONTACT | FERRULE | HSG ASSY | PART NO. |

| | | |
|----------------|------------------|--------|
| CENTER CONTACT | BERYLLIUM COPPER | GOLD |
| HOUSING | BRASS | NICKEL |
| FERRULE | COPPER OR BRASS | NICKEL |
| DIELECTRIC | PTFE | N/A |
| COMPONENT | MATERIAL | FINISH |

THIS DRAWING IS A CONTROLLED DOCUMENT.

DWN: DCam 25SEP2002
 CHK: -
 APVD: DCam 2/24/04
 PRODUCT SPEC: 108-2087
 APPLICATION SPEC: -

TOLERANCES UNLESS OTHERWISE SPECIFIED:
 0 PLC ± -
 1 PLC ± -
 2 PLC ± 0.10
 3 PLC ± -
 4 PLC ± -
 ANGLES ± 1

MATERIAL: - FINISH: -

WEIGHT: -

CUSTOMER DRAWING

Tyco Electronics Tyco Electronics Corporation
 Harrisburg, PA 17105-3608

NAME: QMA STRAIGHT CABLE JACK CRIMP ATTACHMENT

SIZE: A2 CAGE CODE: 00779 DRAWING NO: C=1408338 RESTRICTED TO: -

SCALE: 10:1 SHEET: 1 OF 1 REV: A1