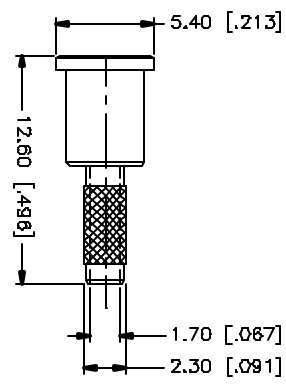
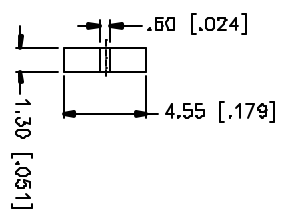
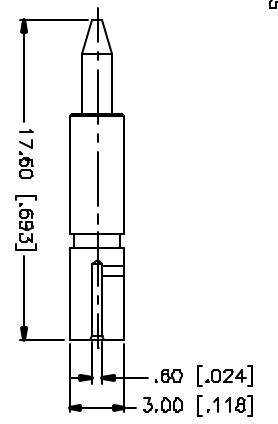
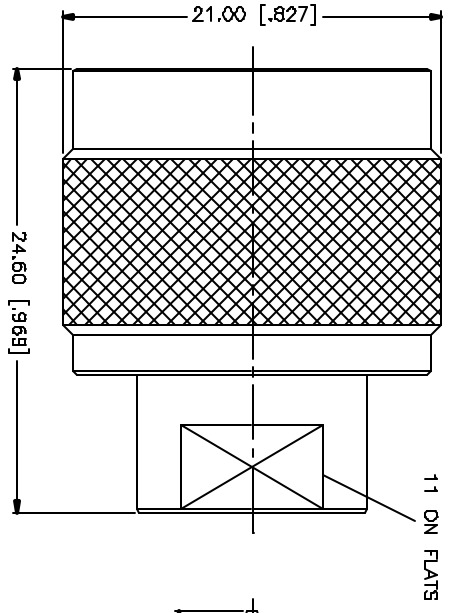
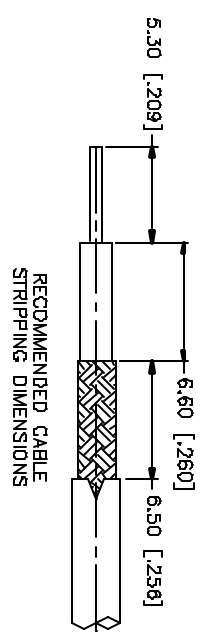
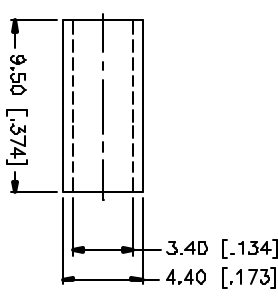
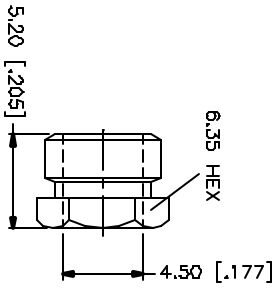


REV.	DATE	DESCRIPTION
A	08/30/00	MODIFY BARREL O.D. DIMENSION
B	05/22/05	UPDATE DRAWING FORMAT/ MODIFY PLATING SPEC



NOTE:
 USE .151 HEX CRIMP DIE TO
 TERMINATE FERRULE TO CABLE.
 - CONNEX TOOL 47-10160
 - IDEAL TOOL 36-489



REV.	DATE	DESCRIPTION
8		
7		
6		
5		
4		
3		
2		
1		

DESCRIPTION	MATERIAL	FINISH	QTY
FERRULE	BRASS	NEOXOTE	1
HEX NUT	BRASS	NEOXOTE	1
BARREL	BRASS	NEOXOTE	1
CONTACT PIN	BRASS	COLD	1
INSULATOR	TEFLON	NATURAL	1
BODY	BRASS	NEOXOTE	1

UNLESS OTHERWISE SPECIFIED DIMENSIONS ARE IN INCHES AND DECIMAL FRACTIONS THEREAFTER. DIMENSIONS FOR MILLIMETERS ARE IN PARENTHESES.

UNLESS OTHERWISE SPECIFIED DIMENSIONS FOR MILLIMETERS ARE:

D.5 - 30mm ± 0.20mm
 B - 30mm ± 0.40mm
 30 - 120mm ± 0.60mm

UNLESS OTHERWISE SPECIFIED DIMENSIONS FOR INCHES ARE:

.020 - .315 = ± 0.007"
 .315 - 1.180 = ± 0.015"
 1.180 - 4.724 = ± 0.030"

DO NOT SCALE DRAWING

APPROVALS	DATE
DRWN G.R.S.	05/22/05
CHECKED	
ISSUED	
BHEET 1 OF 1	

CAD FILE C:/172/172171.DWG

DWG. NO. 172171.DWG

REV. B

SIZE A

SCALE NA

Amphenol Connex

N CRIMP PLUG
 (FOR RG-316/U DOUBLE BRAID CABLE)

PART NO. 172171