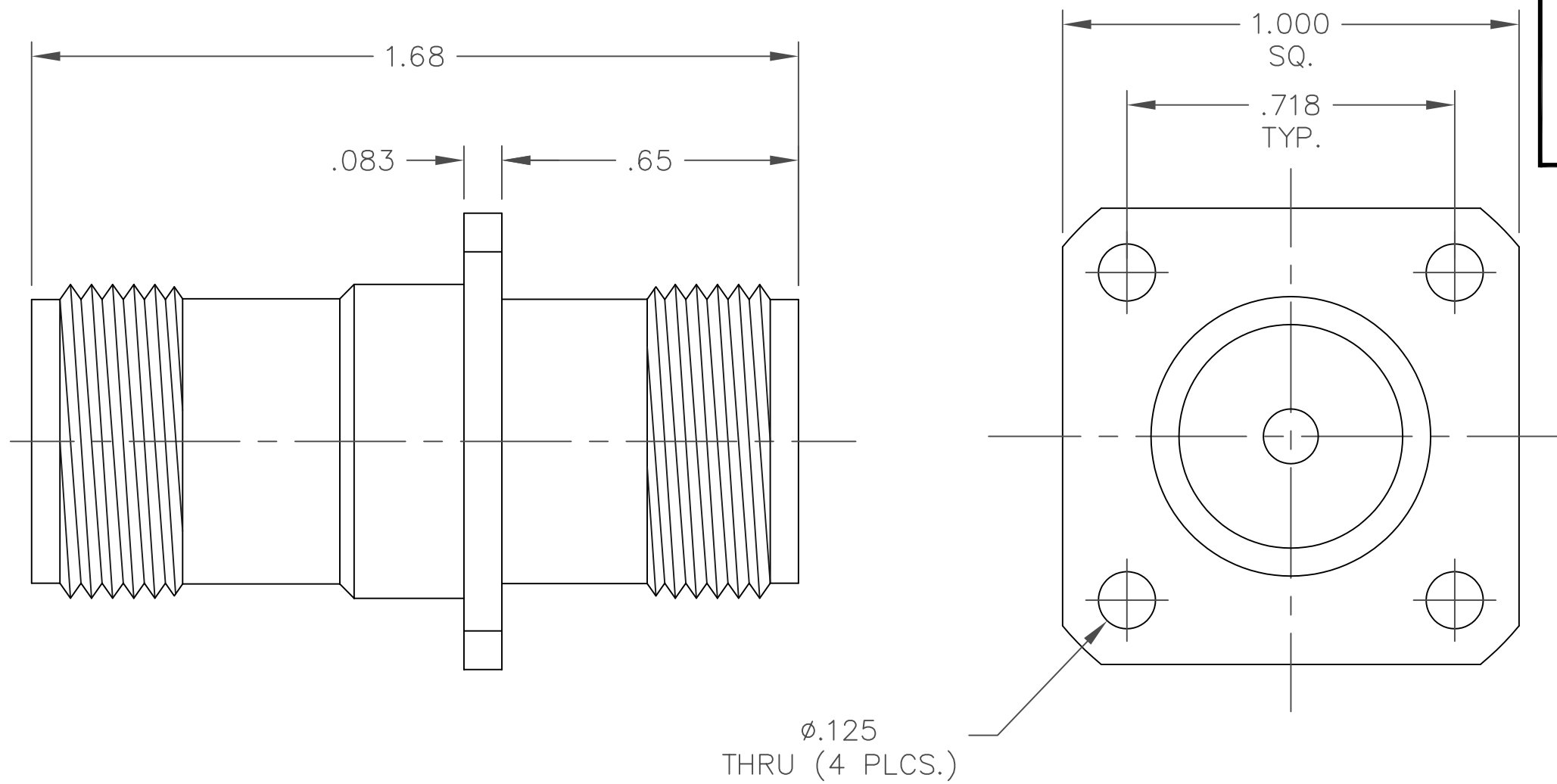


MODEL NUMBER
ADT-2835-FF-SCO-02

NOTES:

- 1.0 MATERIALS:
 - 1.1 HOUSING: STAINLESS STEEL PER ASTM-A582, TYPE 303.
 - 1.2 CENTER CONTACT: BERYLLIUM COPPER ROD ALLOY C172, PER ASTM-B196.
 - 1.3 DIELECTRIC: PTFE FLUOROCARBON PER
- 2.0 PLATING:
 - 2.1 HOUSING: PASSIVATED PER MIL-F-14072 AND QQ-P-35
 - 2.2 CENTER CONTACT: GOLD PER MIL-G-45204, TYPE II, CLASS 2
- 3.0 ELECTRICAL SPECIFICATIONS:
 - 3.1 FREQUENCY RANGE: DC to 11.0 GHz
 - 3.2 VSWR (MAX):
 - DC to 4.0 GHz: 1.08:1
 - 4.0 to 8.0 GHz: 1.10:1
 - 8.0 to 11.0 GHz; 1.15:1
 - 3.3 IMPEDANCE: 50 OHMS
- 4.0 DIMENSIONS IN BRACKETS ARE IN MILLIMETERS.



Ø.125
THRU (4 PLCS.)

NOTICE: The information contained in this drawing is proprietary and must not be used without the permission of Emerson Network Power.	CAGE CODE 34078		MIDWEST MICROWAVE	
			TITLE ADAPTER SC JACK/SC JACK OUTLINE DRAWING	
UNLESS OTHERWISE NOTED DIMENSIONS ARE IN INCHES AND TOLERANCES ARE: 3 PLACE DECIMALS ±.005 2 PLACE DECIMALS ±.02 FRACTIONS ±1/64 PARALLELITY: T.I.R. _____ FLATNESS: T.I.R. _____ CONCENTRICITY: T.I.R. _____ ANGLES AND PERPENDICULARITY: ±1°	DRAWN/DATE L.BROWN 11/11/99	ENG./DATE G.KOZAK 2/1/00	DRAWING NUMBER ADT-2835-FF-SCO-02-01	REV. -
	CHECKED/DATE	APPROVED/DATE	SCALE: 3=1	SHEET 1 of 1

DATE	2/2/00
DESCRIPTION	RELEASED
REV.	-