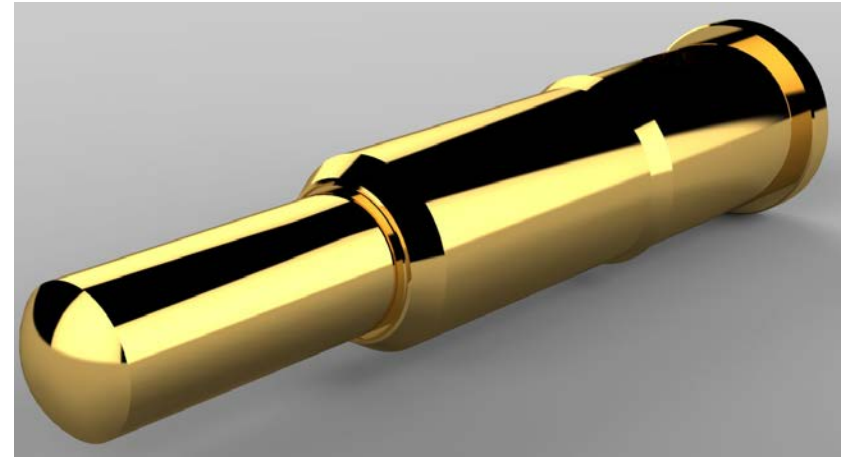


preci-dip

swiss world connects



PRECI-DIP SMT Spring Loaded Contacts



*Exploring the Preci-Dip Advantage...
A brief look at vertical SMT spring loaded contacts.*





The Preci-Dip Advantage

We realize our customer's are not impressed by marketing rhetoric and flashy advertisements.

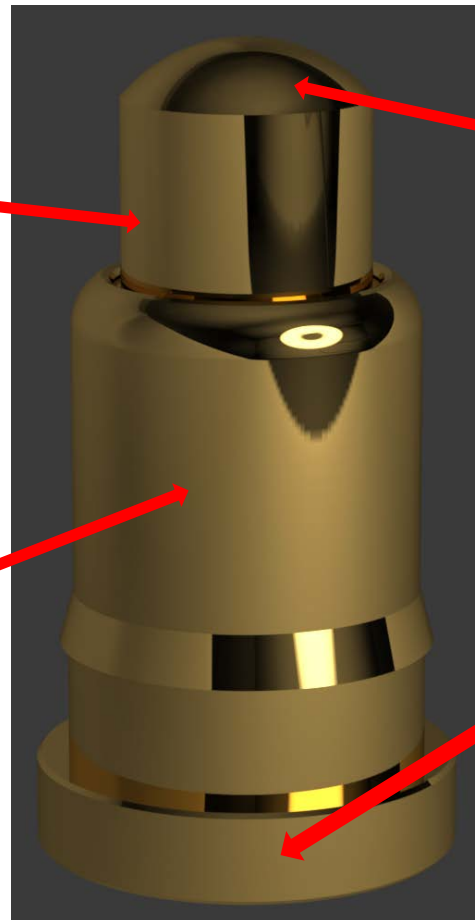
Engineers want and need quality products in their critical applications. The most powerful Preci-Dip advertisement is our product . It speaks for itself.

Look at our product vs. the competition under a microscope and see the difference in workmanship and detail.

Applied Advanced SLC technology: Preci-Dip has several biasing piston designs to offer our customers. Biased pistons keep the signal from passing through the spring.

Superior machined surface inside the barrel, creates SLCs with smooth and quiet piston travel. It's all about the applied experience that results in the quality and performance of our products.

That's why our customer's benefit from the Preci-Dip Advantage.



Superior smooth machined surfaces result in less wear and tear on mating surfaces, resulting in longer product life.

Preci-Dip SMT Spring Loaded Contacts are seamless, one-piece barrel construction. The base of our SLCs are not capped. If you inspect the bottom of our SLCs, you will not find a seam.



Preci-Dip Surface Mount SLCs

Each Preci-Dip Surface Mount Spring Loaded Contact is an assembly of precision machined screw machined parts. Using advanced robotic assembly methods, each SLC is constructed, mechanically and electrically tested.

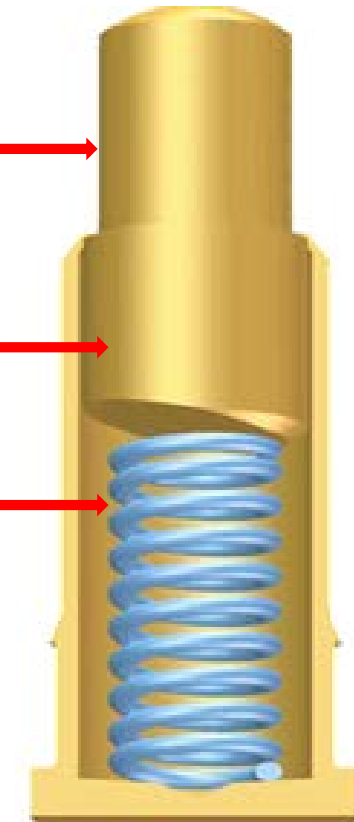
Parts of a Preci-Dip SMT Spring Loaded Contact



Piston

Sleeve

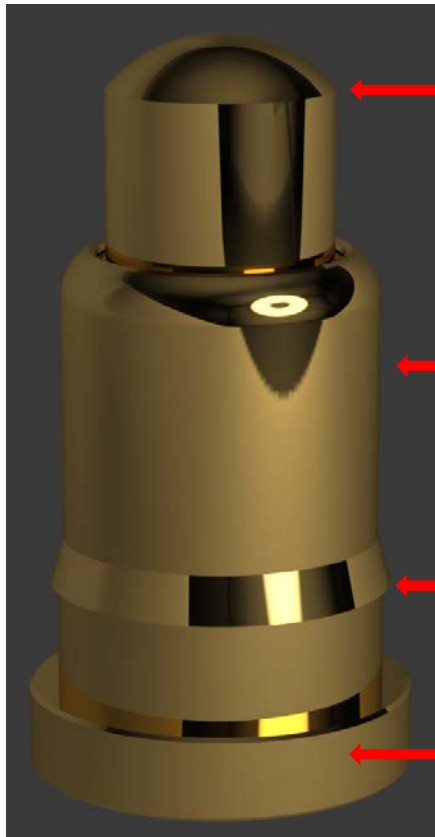
Spring





Preci-Dip Surface Mount SLCs

Each Preci-Dip Surface Mount Spring Loaded Contact is an assembly of precision machined screw machined parts. Using advanced robotic assembly methods, each SLC is constructed, mechanically and electrically tested.



Piston - Unlike our competition, Preci-Dip SMT Spring contacts have been engineered to function at full-stroke. In addition, Preci-Dip rugged piston design can handle side and rotary engagement, which wipes clean the mating conductive surfaces.

Seamless Sleeve construction - Preci-Dip SMT spring loaded contacts have been designed with **one-piece sleeve construction**. This means there are no seams at the base of the sleeve to possibly allow solder to wick in or have the internal SLC components fall out if the cap jars loose.

Press-fit Barb - A press-fit barb allows Preci-Dip to supply our SLCs in molded or machined insulators. Customer's are encouraged to inquire about their custom packaging needs.

Base Preci-Dip SLCs do not have a cut-off burr at the bottom of their sleeves. This ensures the spring loaded contact sits straight and perpendicular on your PCB lands.

Are you planning a project design and need quality manufactured SLCs?
Look no further. Preci-Dip is one of the largest SLC manufacturers in the world.



preci-dip

Preci-Dip is vertically integrated and all manufacturing is performed at our Swiss factory.



Stamping



Secondary operations



Plating



Injection



Screw-machining



Unique production site in Switzerland



Final assembly



From raw material



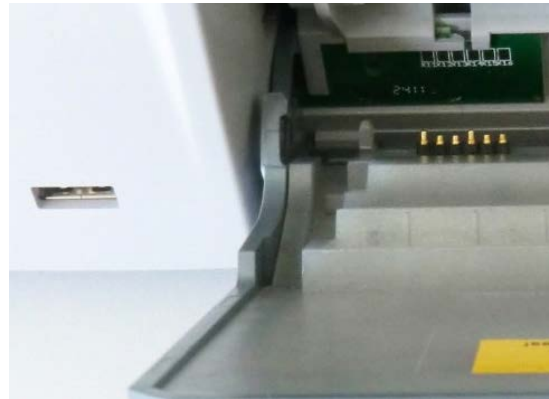
Finished product



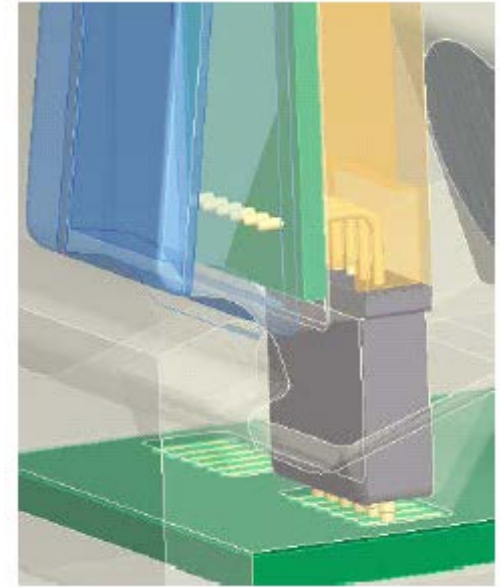
Example SLC Applications:



Docking Stations



Printer Modules



Industrial Motor Interface



Recharging Stations



Metering Devices



preci-dip

Summary and Conclusion

This brief presentation outlined the primary advantages of Preci-Dip Surface Mount Spring Loaded Contacts. It also gave some insights into the engineering features built into our products.

Preci-Dip has is a world leader in the engineering and design of advanced spring loaded contacts and connectors. Since 1996, Preci-Dip has supplied innovative SLC packaging to the world's largest leading-edge technology manufacturers.

Our customer's are big and small. Spring Loaded Contacts (SLCs) are now used in every industry: from aerospace, medical, LED lighting, industrial, military, etc...

Swiss precision machining is known for its inherent attention to detail and quality.

We look forward to helping you with your spring loaded contact requirements.

Thank you for your valuable time.