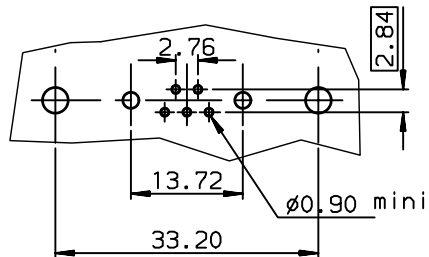


LAYOUT DIMENSIONS (after plating)
CONNECTOR SIDE VIEW



TIN LEAD PART NUMBER

| | |
|---------------|------------|
| DAI7W2P343G30 | M 3 |
| DAV7W2P343G30 | UNC 4.40 |
| DAI7W2P343G40 | M 3 |
| DAV7W2P343G40 | UNC 4.40 |
| DAI7W2P343H30 | M 3 |
| DAV7W2P343H30 | UNC 4.40 |
| DAI7W2P343H40 | M 3 |
| DAV7W2P343H40 | UNC 4.40 |
| PART NUMBER | Threaded A |

LEAD FREE PART NUMBER

| | |
|-----------------|------------|
| DAI7W2P343G30LF | M 3 |
| DAV7W2P343G30LF | UNC 4.40 |
| DAI7W2P343G40LF | M 3 |
| DAV7W2P343G40LF | UNC 4.40 |
| DAI7W2P343H30LF | M 3 |
| DAV7W2P343H30LF | UNC 4.40 |
| DAI7W2P343H40LF | M 3 |
| DAV7W2P343H40LF | UNC 4.40 |
| PART NUMBER | Threaded A |

GENERAL CHARACTERISTICS AND ROHS INFORMATIONS:
SEE DRAWING C01-8639-0000

European Views

| | | | | | | | |
|--|---------|---------------------|-------------------------------------|-----------------------------------|----------------|----------|---------------|
| www.fciconnect.com | | surface ISO 1302 | <input checked="" type="checkbox"/> | tolerance std ISO 406 ISO 1101 | projection | mm | |
| TOLERANCES UNLESS OTHERWISE SPECIFIED | | | | | | | |
| Dr | JOUBERT | 2000/11/27 | ANGULAR | 0.X | ±0.1 | size | |
| Eng | PESSON | 2000/11/27 | LINEAR | 0.XX | ±0.1 | A3 | |
| Chr | LEGARE | 2000/11/27 | 0.XX' ±2' | 0.XXX | ±0.1 | Scale | |
| Appr | LEGARE | 2000/11/27 | Product family | D-SUB | | 1.5 | |
| ECN LS06-0095 | | | | | | Spec ref | - |
| FCI title | | | | | | dwg no | C01-8639-1756 |
| PIN CONNECTOR WITH TWO POWERS CONTACTS | | | | | | Rev. | D |
| catalog no | | | | | | CUSTOMER | sheet 1 of 1 |

| rev | ecn no | dr | date |
|-----|-----------|-----|------------|
| B | - | DEB | 2003/09/29 |
| C | LS05-001 | MPE | 2005/03/09 |
| D | LS06-0095 | LGO | 2006/06/27 |
| - | - | - | - |
| - | - | - | - |
| - | - | - | - |