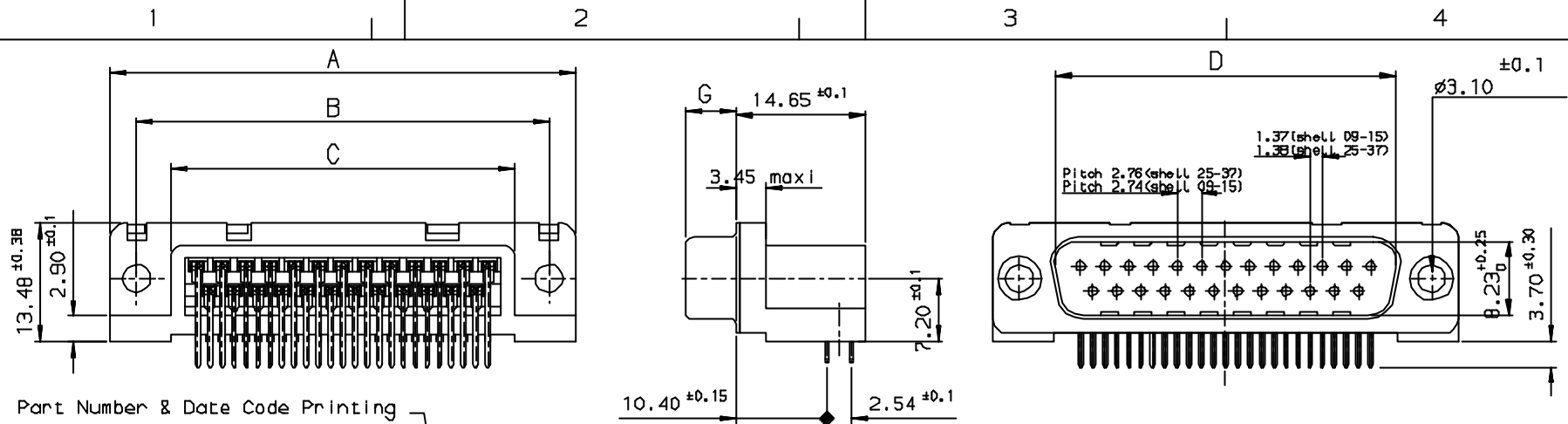


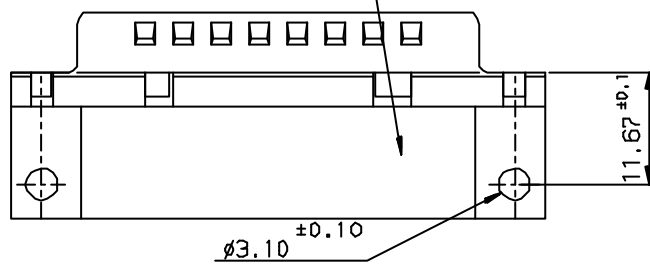
Tous droits strictement réservés. Reproduction ou communication à des tiers interdites sans autorisation écrite de la propriété de FCI. Droits de reproduction FCI.

FCI

All rights strictly reserved. Reproduction or communication to any third parties in any form without the written authority from the proprietor. Property of FCI. Copyright FCI.



Part Number & Date Code Printing

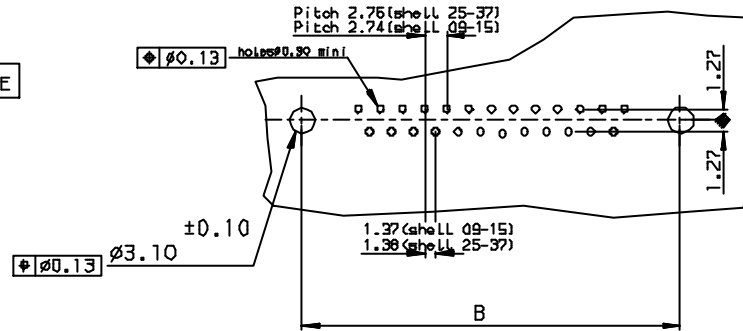


LF FOR LEAD FREE

SHELL	A±0.38	B±0.12	C±0.10	D±0.25	G±0.25	PART NUMBER
09	30.81	24.99	16.96	16.79	5.90	D09P13B*PA00**
15	39.14	33.32	25.18	25.12	5.90	D15P13B*PA00**
25	53.03	47.04	39.12	38.84	5.70	D25P13B*PA00**
37	69.32	63.50	55.68	55.30	5.70	D37P13B*PA00**

Plating: 4 --> Flash AU
Plating: 6 --> D.76µ AU

PC card drilling dimensions (after plating)
(thickness 1.60±0.20mm)



FOR ROHS DETAILS REFER DWG. NO. C01-8646-0000

REQUIREMENTS

Technical characteristics

Shell: steel tin plated
Insulators: self-extinguishing black polyester, UL class 94V0
Contacts size 20: brass, gold on mating end, bright tin on termination end over nickel on entire contact
Cycle life: 500 mini for plating 6
200 mini for plating 4

Electrical characteristics

max. current rating: 5A
Test voltage: 1000V
Rated voltage: 300V
Contact resistance: <15mΩ
Shell resistance: <5mΩ
Insulation resistance: >5000MΩ

Climatic characteristics

Operating temperature range: -55° to +125°

Dimensions

in accordance with MIL-C-24308

INDEX	DATE	REVISION DESCRIPTION
e	27/7/05	LEAD FREE DETAILS ADDED

Utr	Eon no	Dr	date
e	105-0124	JS	27/7/05

		✓		Tolerance LINEAR ±0.1 ANGULAR ±1°	Projection 	MM →
Dr JOHN SLEEDA	19/4/93	Product Family	D-SUB	Size	A3	Scale
Eng GEORGE VJ	19/4/93	Spec ref		ECN		
Chr GEORGE VJ	27/7/05	Material				
Appr K Somasundaram	27/7/05					
FCI	Title	MALE CONNECT. DELTA D right angle spill without accessories.		Dwg no	C01-8646-0162	
	Rev.	e				
	Catalog no	DELTA-D		CUSTOMER COPY	Sheet 1 of 1	