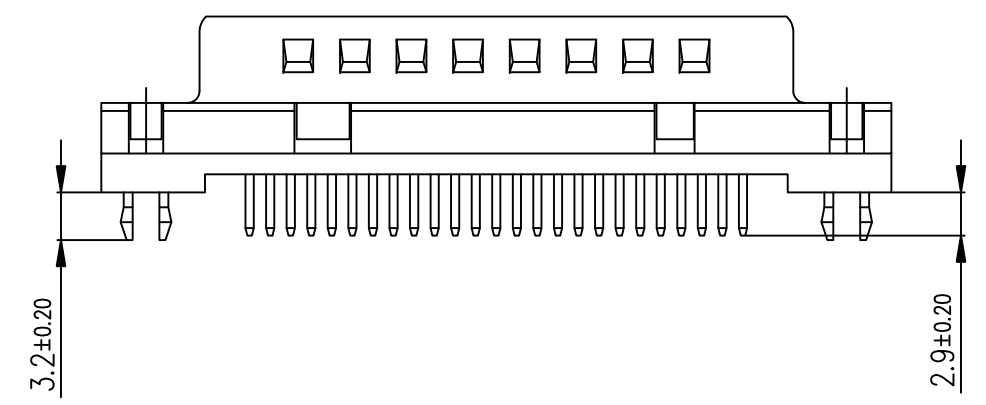
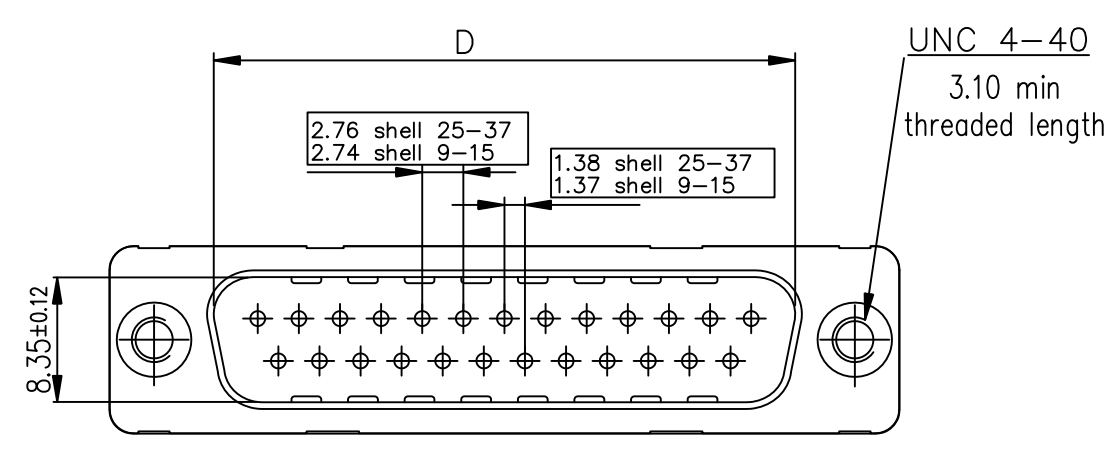
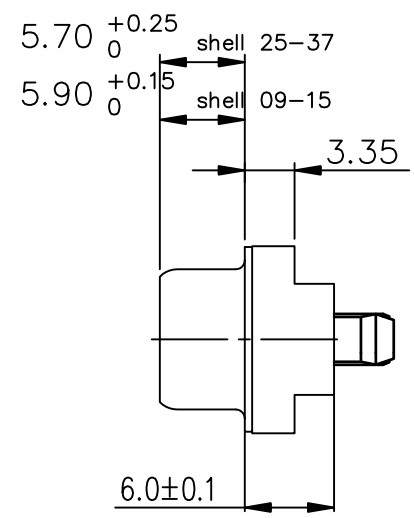
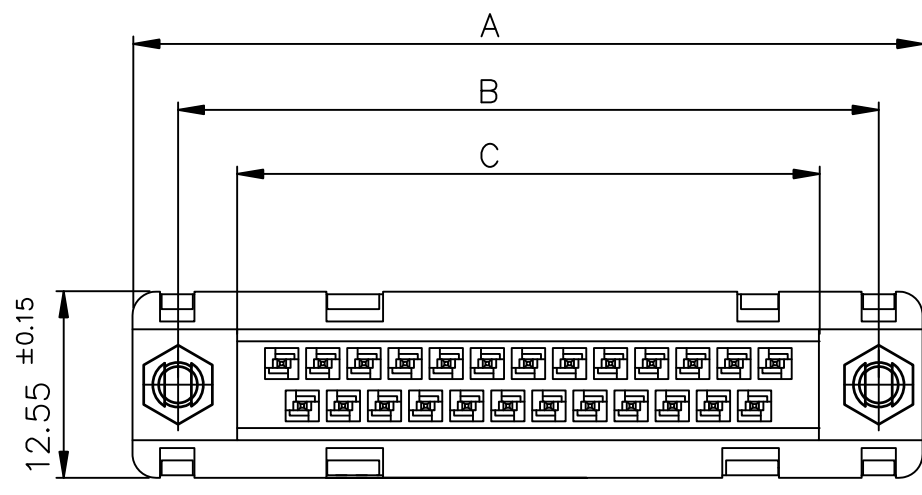




Copyright FCI

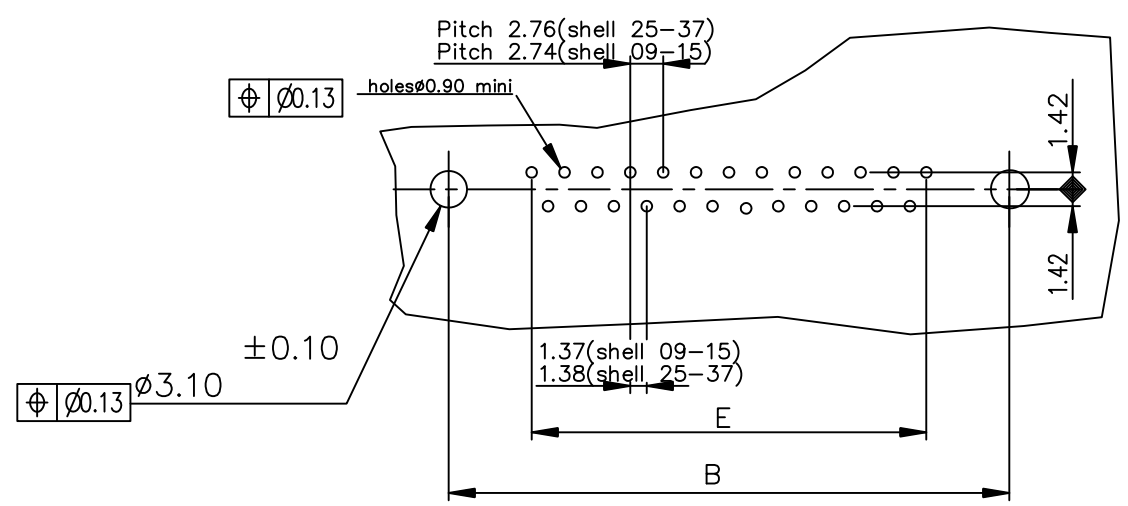


LEAD FREE PART NUMBER

SHELL	A±0.38	B±0.12	C±0.10	D±0.25	E±0.07	PART NUMBER
09	30.81	24.99	16.96	16.79	10.96	D09P24A.GX00LF
15	39.14	33.32	25.18	25.12	19.18	D15P24A.GX00LF
25	53.03	47.04	39.12	38.84	33.12	D25P24A.GX00LF
37	69.32	63.50	55.68	55.30	49.68	D37P24A.GX00LF

Protection: 4 --> Flash Au
6 --> 0.76µ Au

PC card drilling dimensions(after plating)
(thickness 1.60±0.20mm)



GENERAL CHARACTERISTICS AND ROHS INFORMATIONS:
SEE DRAWING C01-8646-0000

mat'l. code		surface		tolerance		projection		product family	
-		ISO 1302 ✓		ISO 406 ISO 1101				D-SUB	
ltr	ecn no	dr	date	tolerances unless otherwise specified				title	
K	ELX-I-21654	AB	2015-10-26			MM		MALE DELTA-D STRAIGHT, SOLDER TYPE	
				angles	linear	scale 2:1		dwg no	
				0°±2'	.0±0.1 .00±0.1 .000±0.1			sheet 1 of 1	
				dr	LELEON	1992-09-10		size	
				enr	ALIAS BABU	2015-10-26		A3	
				chr	MITHUN PAUL	2015-10-26		C01-8646-0101	
				app	BIJU K PAUL	2015-10-26		type	
								Product Customer Drawing	
sheet index	revision	K	1						