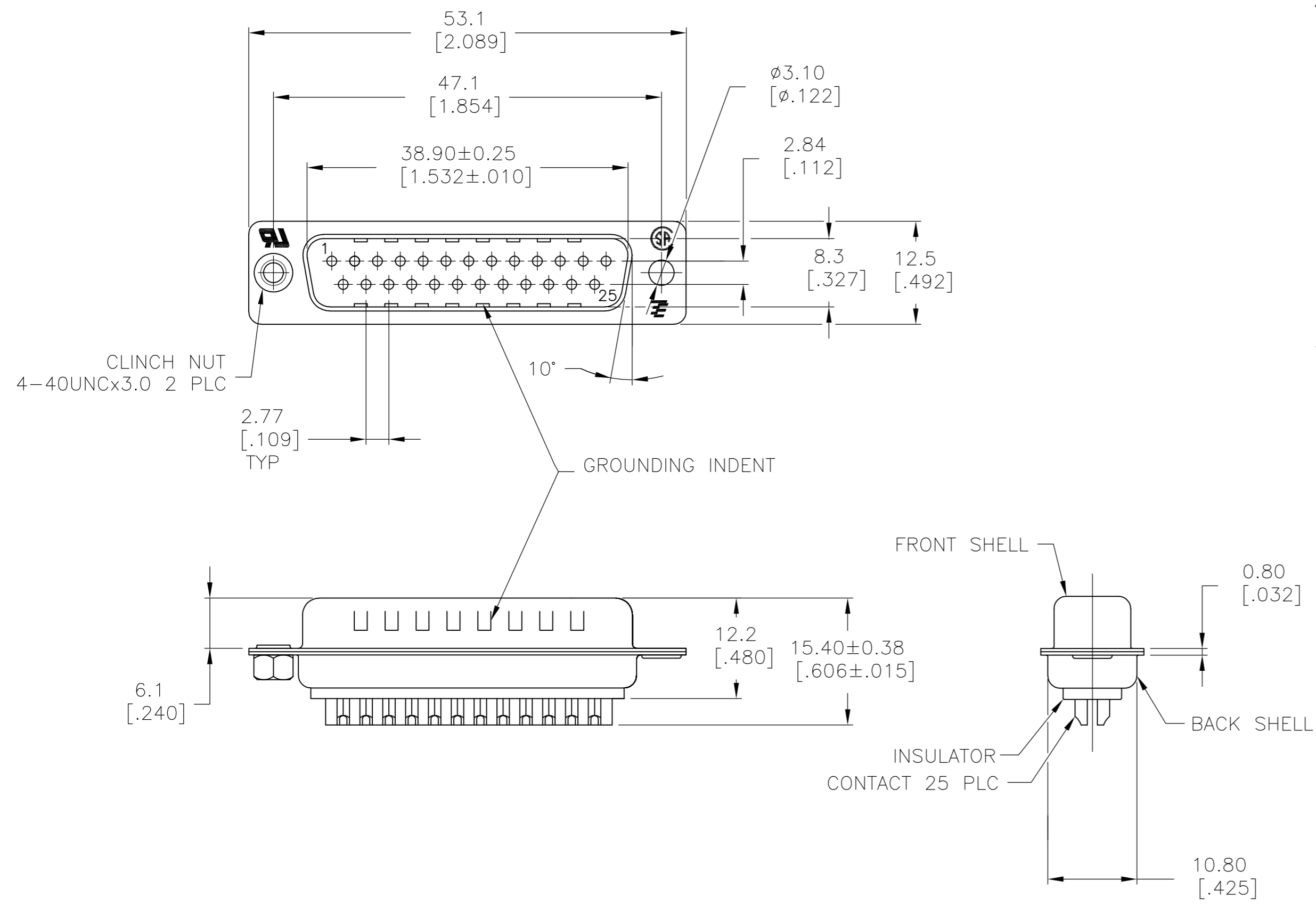


THIS DRAWING IS UNPUBLISHED. RELEASED FOR PUBLICATION
 © COPYRIGHT - By - ALL RIGHTS RESERVED.

| LOC | DIST | REVISIONS | | | |
|-----|------|---------------------------|-----------|-----|------|
| P | LTR | DESCRIPTION | DATE | DWN | APVD |
| GP | 00 | REVISED PER ECO-15-010090 | 16JUL2015 | AP | DG |



- 1 MATERIAL:
 FRONT INSULATOR: PBT, 30 %GF, UL94V-0, BLACK COLOR
 BACK INSULATOR: PBT, 30 %GF, UL94V-0, BLACK COLOR
 CONTACT: BRASS
 FRONT SHELL: STEEL
 BACK SHELL: STEEL
 CLINCH NUTS: BRASS
- 2 FINISH:
 CONTACT: GOLD PLATING 0.00002[.000008] MIN ON CONTACT AREA 0.00229 [.000090] MIN TIN-LEAD PLATING ALL OVER 0.00127[.000050] MIN NICKEL
- 3 CONTACT: GOLD PLATING 0.00076[.000030] MIN ON CONTACT AREA 0.00229 [.000090] MIN TIN-LEAD PLATING ALL OVER 0.00127[.000050] MIN NICKEL
- 4 SHELL: BRIGHT TIN 0.00241[.000095] MIN FULL SHELL
- 5 SHELL: BLUE ZINC: 0.00508[.000200] - 0.00762[.000300] OVER ENTIRE SHELL
- 6 CONTACT: GOLD PLATING 0.00002[.000008] MIN ON CONTACT AREA 0.00229 [.000090] MIN HOT DIPPED TIN-COPPER PLATING ALL OVER 0.00127[.000050] MIN NICKEL.
- 7 CLINCH NUTS: NICKEL PLATING .00305-.00508[.000120-.000200]
- 8 SPECIFICATION
 ELECTRICAL CHARACTERISTICS: CURRENT RATING: 3 AMPERES
 DIELECTRIC WITHSTANDING VOLTAGE: AC 1000V r.m.s
 INSULATION RESISTANCE: 5000 MEGOHMS MINIMUM AT DC 500V
 CONTACT RESISTANCE: 10 MILLIOHMS MAXIMUM.
- 9 ROHS 2002/95/EC COMPLIANT
- 10 PLUG ASSEMBLY MATES WITH ANY 25 POSITION RECEPTACLE IN AMPLIMITE SERIES
 SOLDER CUP WILL ACCOMMODATE 20 MAX AWG WIRE.
- 11 CONTACT: GOLD PLATING 0.00076[.000030] MIN ON CONTACT AREA 0.00229[.000090] MIN HOT DIPPED TIN-COPPER ALL OVER 0.00127[.000050] MIN NICKEL PLATING

| STANDARD | NO | YES | NO | YES | NO | YES | NO | YES |
|----------|-----|-----|----|-----|----|-----|----|-----|
| 9 | NO | NO | NO | NO | NO | NO | NO | NO |
| 9 | YES | YES | NO | NO | NO | NO | NO | NO |
| 9 | NO | YES | NO | NO | NO | NO | NO | NO |
| 9 | NO | YES | NO | NO | NO | NO | NO | NO |
| 9 | NO | YES | NO | NO | NO | NO | NO | NO |
| 9 | NO | YES | NO | NO | NO | NO | NO | NO |
| 9 | NO | YES | NO | NO | NO | NO | NO | NO |
| 9 | NO | YES | NO | NO | NO | NO | NO | NO |
| 9 | NO | YES | NO | NO | NO | NO | NO | NO |
| 9 | NO | YES | NO | NO | NO | NO | NO | NO |

THIS DRAWING IS A CONTROLLED DOCUMENT. DIMENSIONING AND TOLERANCING PER ASME Y14.5M-2009

DWN M.BINNER 03MAR03
 CHK R.BENDORF 05MAR03
 APVD R.BENDORF 05MAR03
 PRODUCT SPEC
 APPLICATION SPEC

TE Connectivity
 PLUG ASSEMBLY, SOLDER CUP, SIZE 3, 25 POSN, HD-20, AMPLIMITE

SIZE A2 CAGE CODE 00779 DRAWING NO C=747912 RESTRICTED TO -

MATERIAL 1 FINISH SEE TABLE WEIGHT - SCALE 2:1 SHEET 1 OF 1 REV Y

CUSTOMER DRAWING