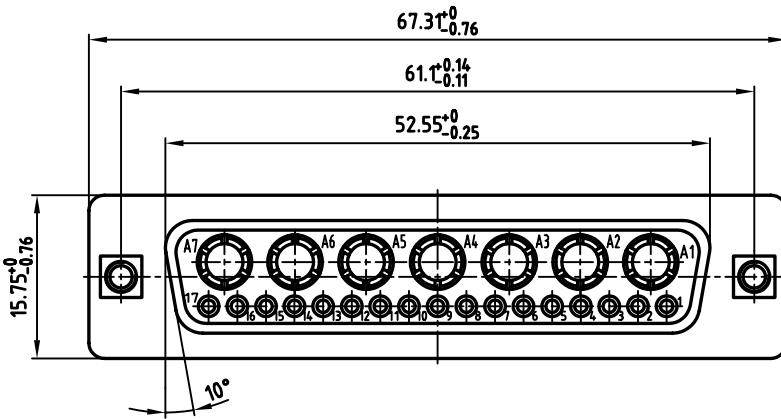
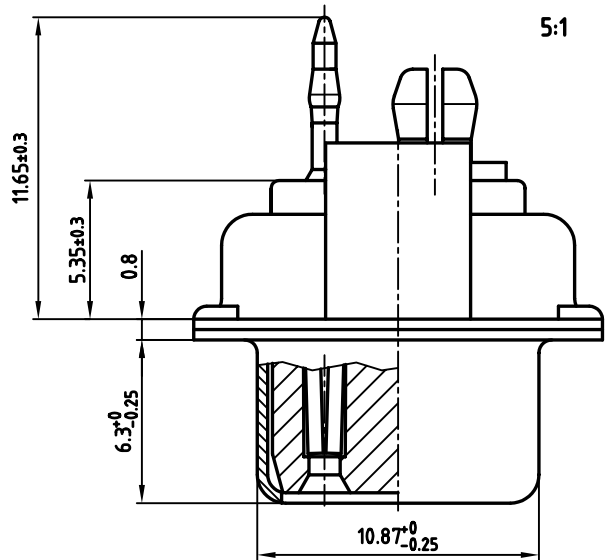


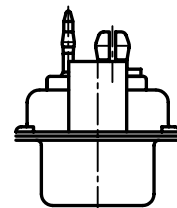
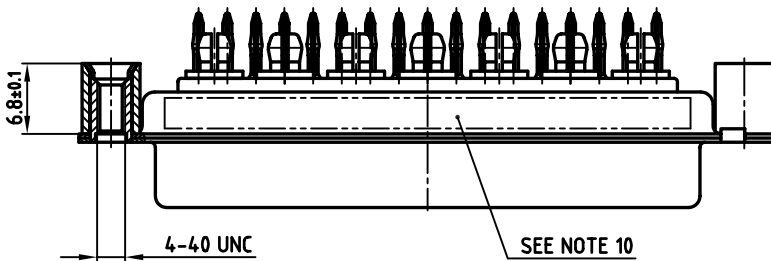
used for: D-SUB COMBINATION

NOTES:

1. METALSHELLS: STEEL; min. 315µin TIN OVER 40-80µin NICKEL
2. INSULATORS: PBT GF UL 94 V-0, GREEN
3. PRESS-FIT SIGNAL CONTACTS: COPPER ALLOY
PLATING-MATING AREA+REAR SIDE:
8µin HARD GOLD OVER min. 50µin NICKEL
4. HIGH POWER PRESS-FIT CONTACTS 40A: COPPER ALLOY
PLATING-MATING AREA: 8µin HARD GOLD OVER min. 50µin NICKEL
PLATING: PRESS-FIT AREA: TIN PLATED
5. P.C.B. THICKNESS: min. 2.2mm
6. THREADED REAR SPACER: COPPER ALLOY; min. 200µin TIN OVER 80µin NICKEL
7. SLEEVE: COPPER ALLOY; min. 200µin TIN OVER 80µin NICKEL
8. P.C.B. HOLE DRILLINGS ON SHEET 2
9. MAXIMUM TORQUE VALUE FOR THREAD: 6 in.LB
10. CONNECTOR IS PART MARKED: 3024W7SAP98A48A CONEC ABC



CONNECTOR SHOULD BE FIXED WITH SCREWS TO THE P.C.B.

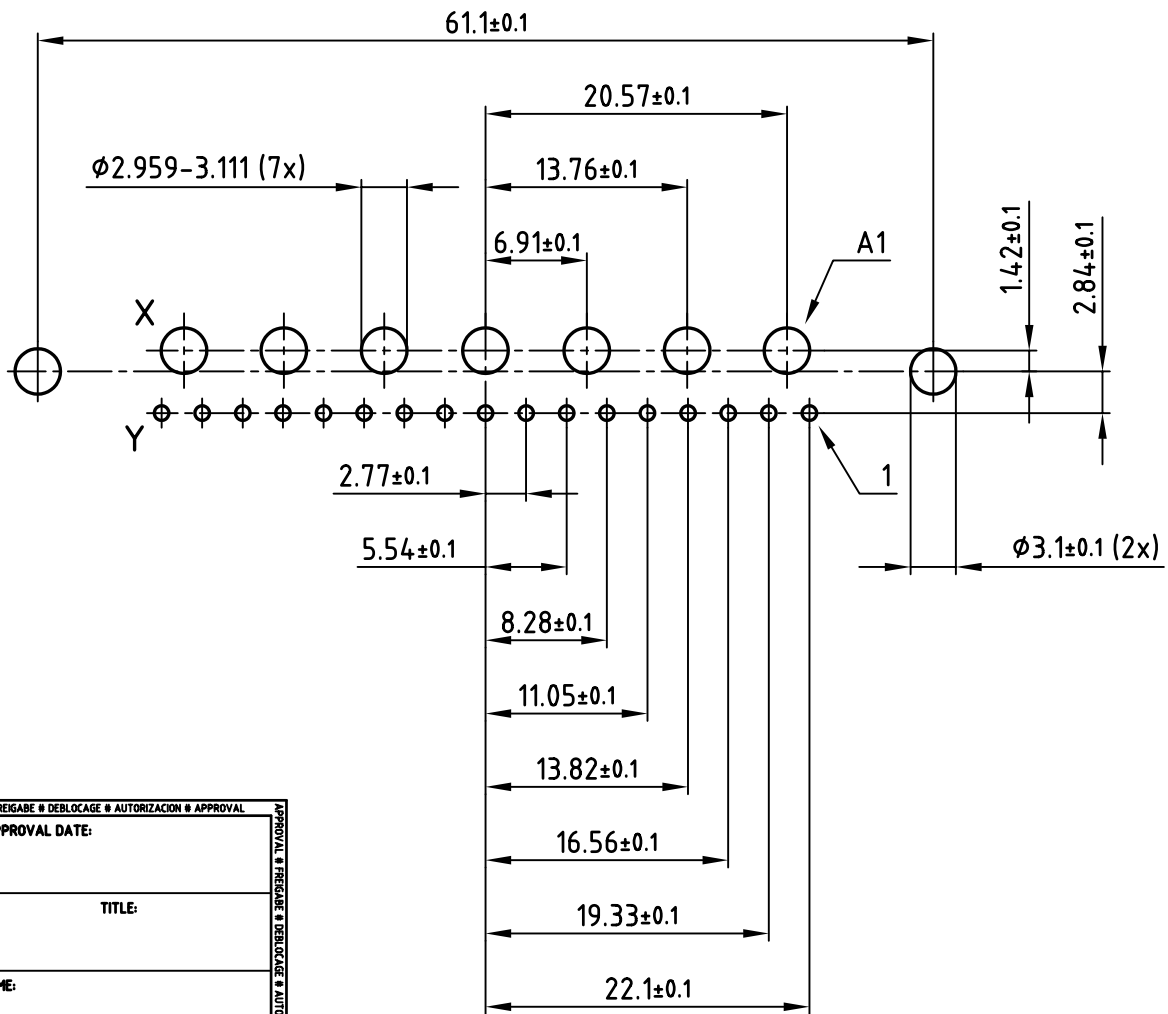
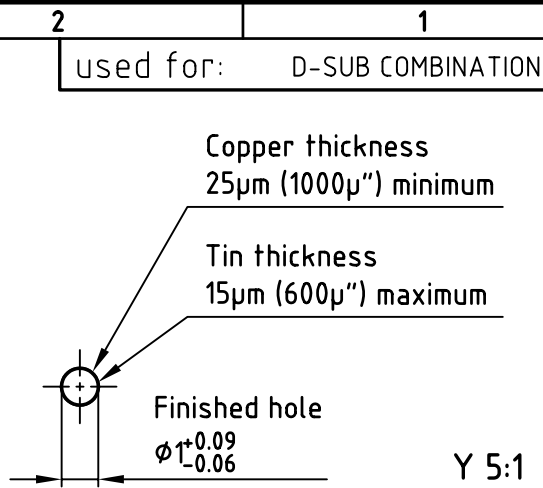
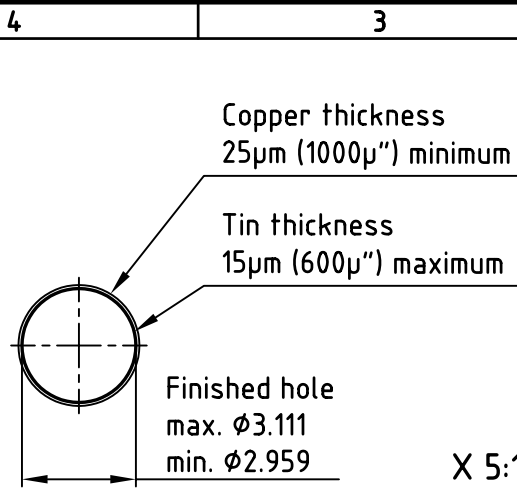


| | |
|---|--------|
| APPROVAL * FREIGABE * DEBLOCAGE * AUTORIZACION * APPROVAL | |
| CUSTOMER APPROVAL DATE: | |
| NAME: | TITLE: |
| COMPANY NAME: | |
| APPROVAL * FREIGABE * DEBLOCAGE * AUTORIZACION * APPROVAL | |

THIS DRAWING MAY NOT BE COPIED OR REPRODUCED IN ANY WAY, AND MAY NOT BE PASSED ON TO A THIRD PARTY, WITHOUT WRITTEN PERMISSION. OWNERSHIP AND COPYRIGHT OF CONEC Gmbh DO NOT ALTER CAD DRAWING BY HAND

| | | | |
|-----------|-------------|---------------|---------------------------------|
| tolerance | | scale: | 2:1 (5:1) |
| | dim. in mm | material: | SEE NOTES |
| 2007 | date | name | title: |
| drawn | 26.02. | Lehmenkühtler | D-SUB COMBINATION FEMALE |
| appd. | 26.02. | Koch | 24W7S PRESSFIT TYPE |
| norm | | | with threaded rear spacer |
| d-old | | | dwg no: AutoCAD 2006 |
| a | Origin | CONEC | 13K1A1982 |
| rev. | description | date | name |
| | | | part no: 3024W7SAP98A48A |

| | | |
|---------|--------------|--------|
| dwg no: | AutoCAD 2006 | DIN-A |
| | | 3 |
| | | sh:1/2 |



| | |
|---|--------|
| APPROVAL # FREIGABE # DEBLOCAGE # AUTORIZACION # APPROVAL | |
| CUSTOMER APPROVAL DATE: | |
| NAME: | TITLE: |
| COMPANY NAME: | |
| APPROVAL # FREIGABE # DEBLOCAGE # AUTORIZACION # APPROVAL | |

THIS DRAWING MAY NOT BE COPIED OR REPRODUCED IN ANY WAY, AND MAY NOT BE PASSED ON TO A THIRD PARTY WITHOUT WRITTEN PERMISSION.
 OWNERSHIP AND COPYRIGHT OF CONEC GmbH
 DO NOT ALTER CAD DRAWING BY HAND

| | | | | |
|------------|-------------|--------------|--|------------|
| tolerance | | | scale: 2:1 (5:1) | |
| dim. in mm | | | material: SEE SHEET 1 | |
| 2007 | date | name | title: P.C.B. HOLE DRILLINGS D-SUB COMBINATION FEMALE 24W7S PRESSFIT with threaded rear spacer | |
| drawn | 26.02. | Lehmenkühler | | |
| appd. | 26.02. | Koch | | |
| norm | | | | |
| d-old | | | | |
| a | Origin | | dwg no: AutoCAD 2006 | |
| rev. | description | date | name | DIN-A 4 |
| | | | sh:2/2 | |



| | |
|----------------------|--|
| part no: SEE SHEET 1 | |
|----------------------|--|