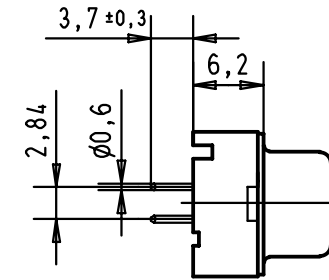
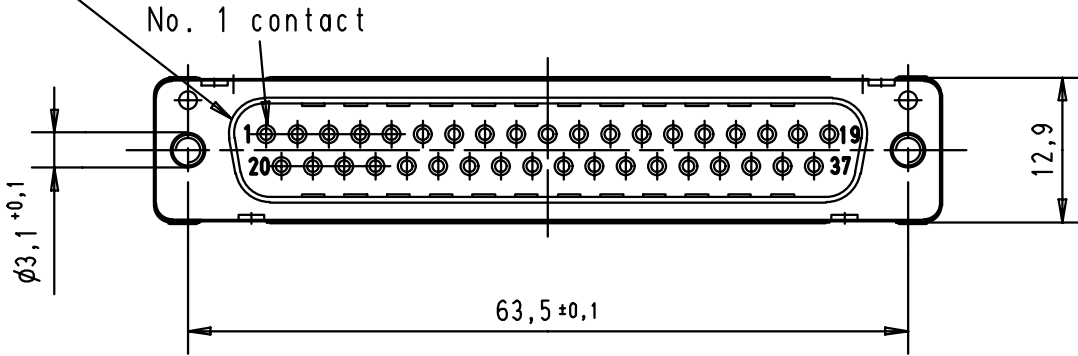
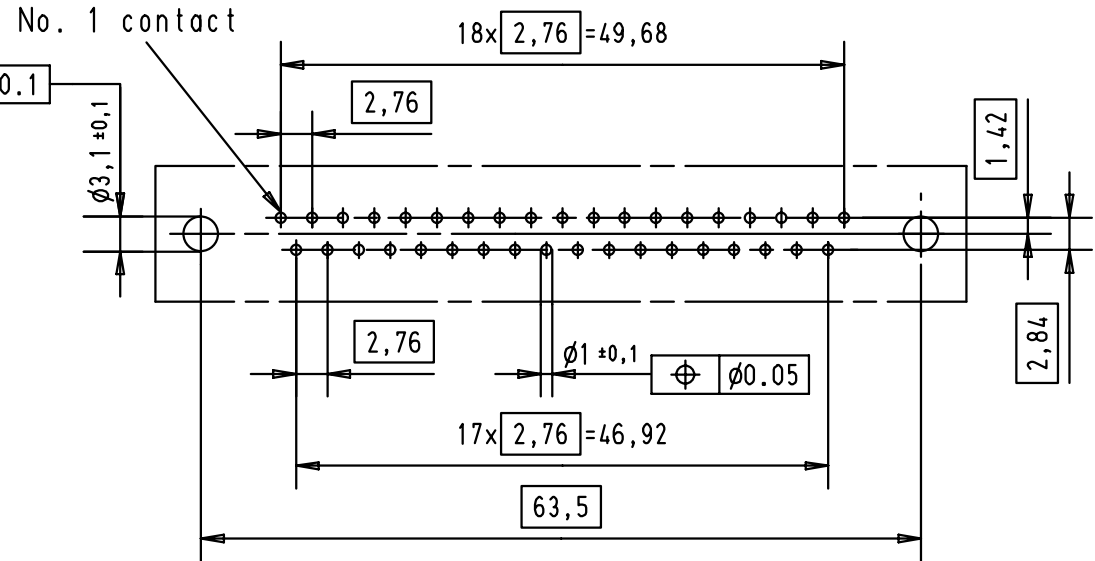
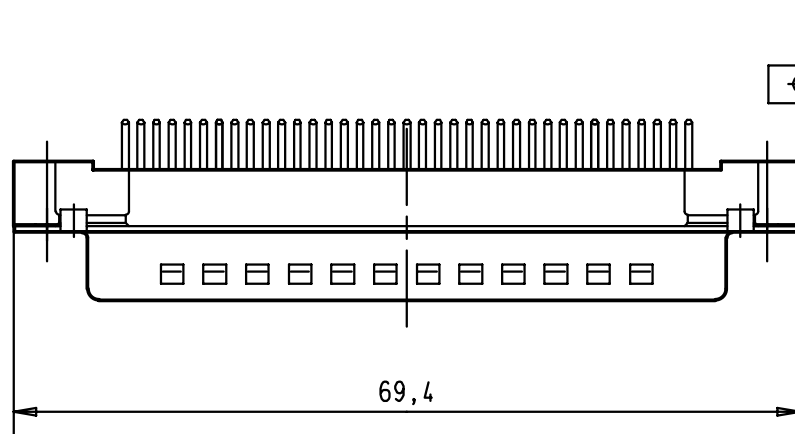


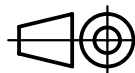

5 4 3 2 1

Mating face according to MIL-C-24308 / DIN 41 652 / CECC 75301-802



Printed board layout  
View component side  
(PCB plating = Tin)



A	09 66 421 6701	M3	2						 All Dim. in mm Orig. Size DIN A 4	D-Sub male straight 37 poles with solder pins and nuts	Maßstab/ Scale  1,5:1		
	09 66 421 7701	M3	3				Detail.	12-OCT-01				JB	
	09 66 421 5701	M3	0,76 µm Au				Insp.						
	09 66 421 6702	4-40 UNC	2				Stand.						
	09 66 421 7702	4-40 UNC	3	29737	8-NOV-01	JB	HARTING EURL					TB 09 66 421 X70X	
	09 66 421 5702	4-40 UNC	0,76 µm Au	29719	12-OCT-01	JB	F-95972 Paris						
Part number	nut thread	Performance level	Mod.	Dat.	Name				Blatt/ Page 1				