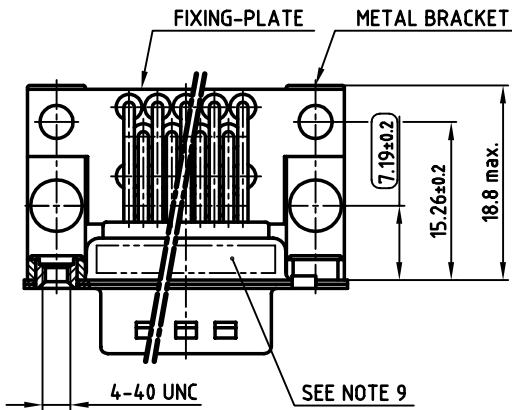
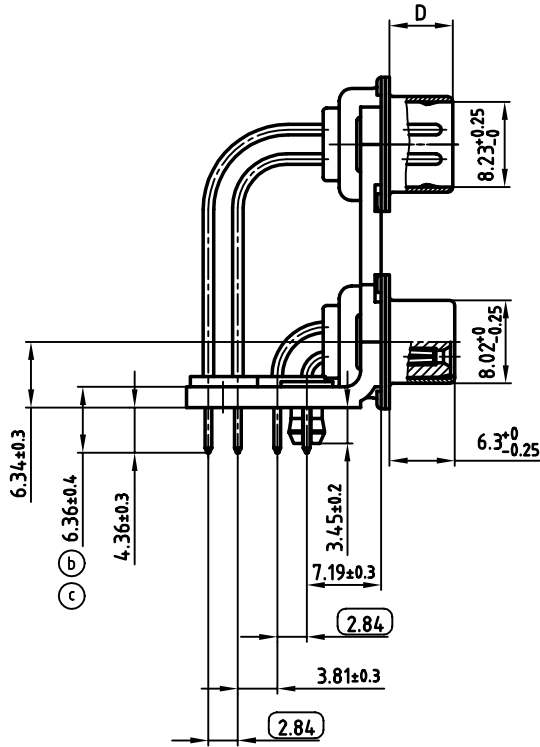
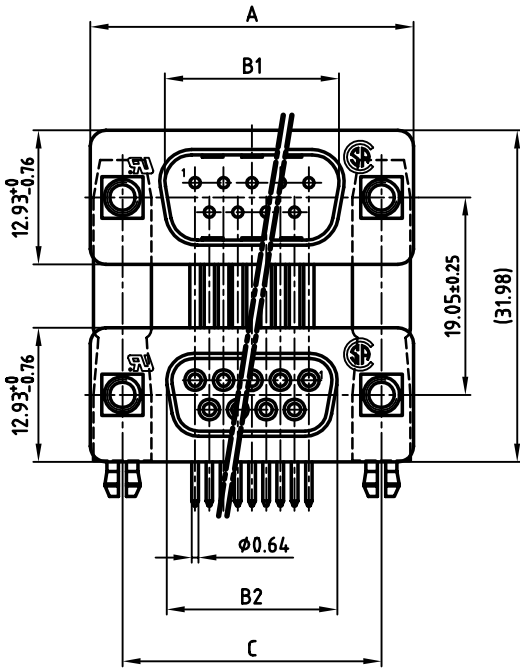


used for: D-SUB Dual Port

POS.	A _{-0.76}	B1 ^{+0.25}	B2 _{-0.25}	C	D _{-0.3}
2x 9	31.19	16.79	16.46	25.00 ^{+0.12} _{-0.13}	6.12
2x15	39.52	25.12	24.79	33.30 ^{+0.15} _{-0.1}	6.12
2x25	53.42	38.84	38.50	47.04 ^{+0.13}	5.99
2x37	69.70	55.30	54.96	63.50 ^{+0.13}	5.99

PLATING	2 x 9pos.	2 x 15pos.	2 x 25pos.	2 x 37pos.
8µ" HARD GOLD OVER min. 50µ" NICKEL	163A19529X	163A19539X	163A19549X	163A19559X
30µ" HARD GOLD OVER min. 50µ" NICKEL	163C19529X	163C19539X	163C19549X	163C19559X

(b)



NOTES:

- METALSHELLS: STEEL; min. 320µ" TIN
- INSULATORS: PBT GF UL 94 V-0, BLACK
- CONTACTS: COPPER ALLOY
- PLATING: SEE TABLE
- METAL BRACKET: STEEL; min. 320µ" TIN over 80µ" NICKEL
- THREADED INSERT: COPPER ALLOY; min. 200µ" TIN over 80µ" NICKEL
- FIXING-PLATE: PBT GF UL 94 V-0, BLACK
- P.C.B. HOLE DRILLINGS ON SHEET 2 + 3
- MAXIMUM TORQUE VALUE FOR THREAD: 6" LBS
- CONNECTOR IS PART MARKED: PART-NO. CONEC Y/WW
- 2.84 = CRITICAL DIMENSION

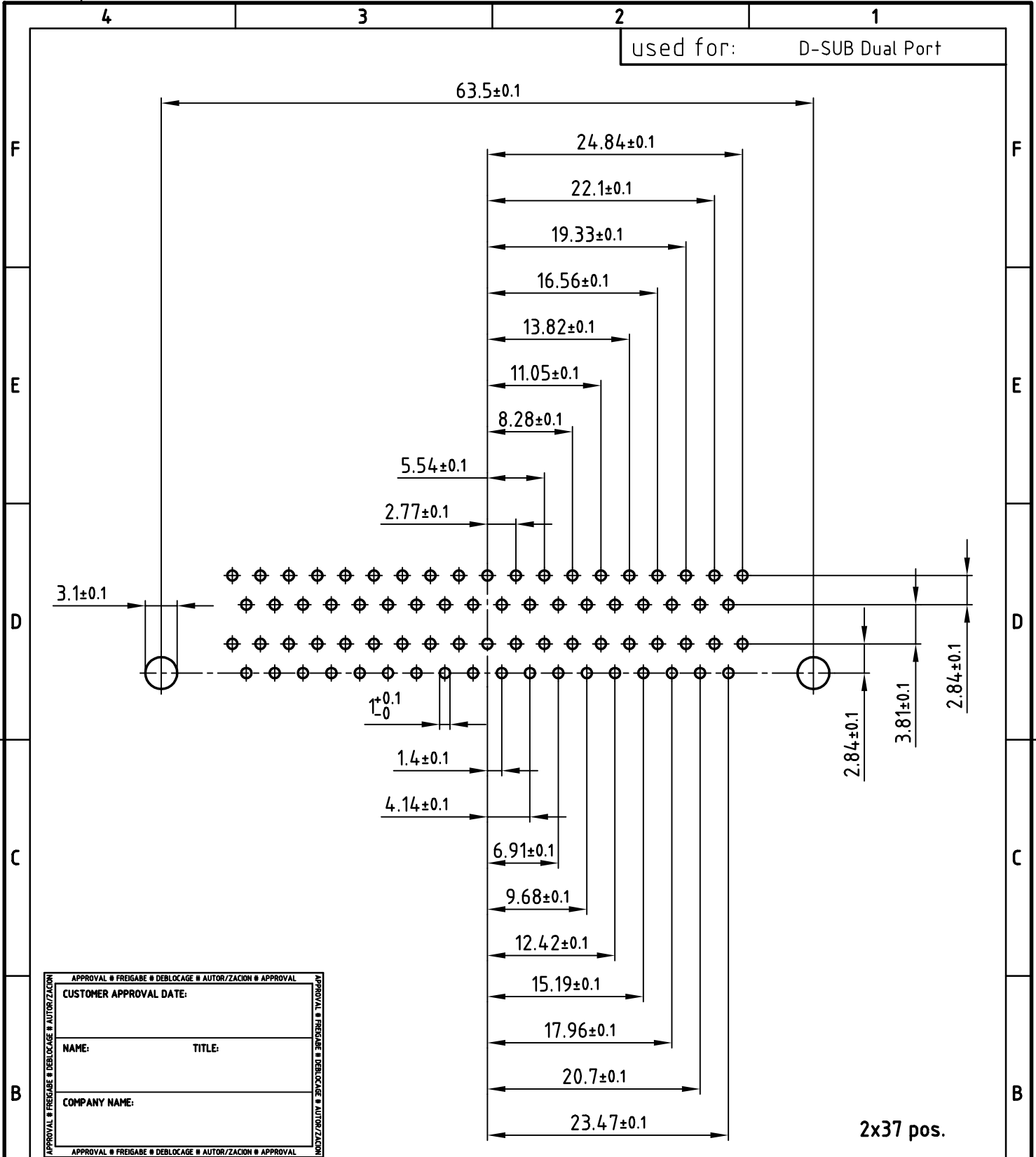
Directive 2002/95/EC
"RoHS"
Compliant

APPROVAL # FREIGABE # DEBLOCAGE # AUTORIZACION # APPROVAL	APPROVAL # FREIGABE # DEBLOCAGE # AUTORIZACION # APPROVAL
CUSTOMER APPROVAL DATE:	
NAME:	TITLE:
COMPANY NAME:	
APPROVAL # FREIGABE # DEBLOCAGE # AUTORIZACION # APPROVAL	

THIS DRAWING MAY NOT BE COPIED OR REPRODUCED IN ANY WAY, AND MAY NOT BE PASSED ON TO A THIRD PARTY, WITHOUT WRITTEN PERMISSION. OWNERSHIP AND COPYRIGHT OF CONEC GmbH DO NOT ALTER CAD DRAWING BY HAND			
1 x c	Ä 1919	09.01.2004	Lehmen
3 x b	Ä 1905	19.12.2003	Lehmen
rev.	description	date	name

tolerance		dim. in mm
2000	date	
drawn	31.01.	name
appd.	31.01.	Mickenbecker
norm	DIN 41652	
d-old		

scale:	2:1
material:	SEE NOTES
title:	
DUAL PORT 19.05mm MALE / FEMALE 2x9pos. - 2x37pos. with threaded insert and clip	
dwg no:	AutoCAD 2000 DIN-A
16K11MFA	
part no:	SEE TABLE
3 sh:1/3	



APPROVAL # FREIGABE # DEBLOCAGE # AUTORIZACION # APPROVAL	
CUSTOMER APPROVAL DATE:	
NAME:	TITLE:
COMPANY NAME:	
APPROVAL # FREIGABE # DEBLOCAGE # AUTORIZACION # APPROVAL	

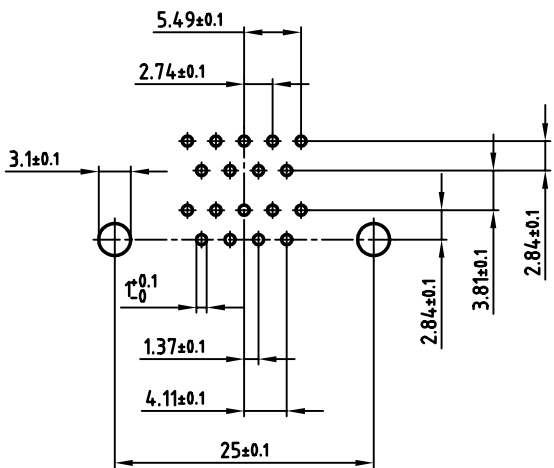
THIS DRAWING MAY NOT BE COPIED OR REPRODUCED IN ANY WAY, AND MAY NOT BE PASSED ON TO A THIRD PARTY WITHOUT WRITTEN PERMISSION.
 OWNERSHIP AND COPYRIGHT OF CONEC GmbH
 DO NOT ALTER CAD DRAWING BY HAND

1 x b	Ä 1905	19.12.2003	Lehmen
rev.	description	date	name

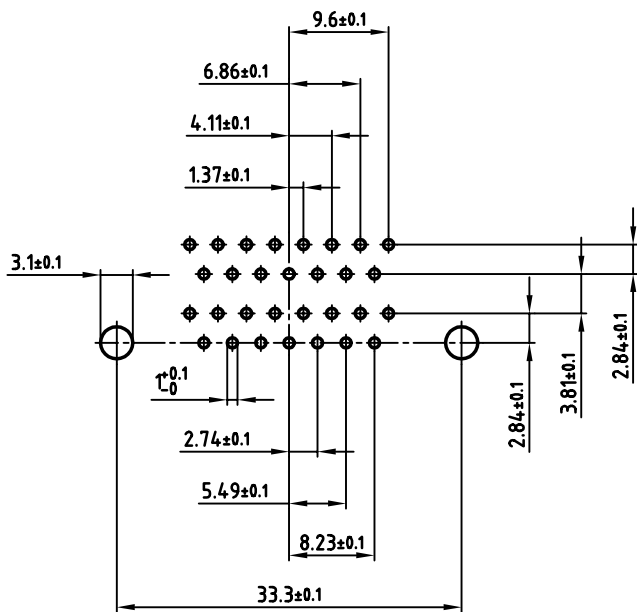
tolerance		
2000	date	name
drawn	31.01.	Barcinski
appd.	31.01.	Mickenbecker
norm	DIN 41652	
d-old		
CONEC®		

scale:	2:1	
material:	SEE SHEET 1	
title:	ⓑ P.C.B. HOLE DRILLINGS DUAL PORT 19.05mm MALE / FEMALE with threaded insert and clip	
dwg no:	AutoCAD 2000	DIN-A
	16K11MFA	4
		sh:3/3
part no:	SEE SHEET 1	

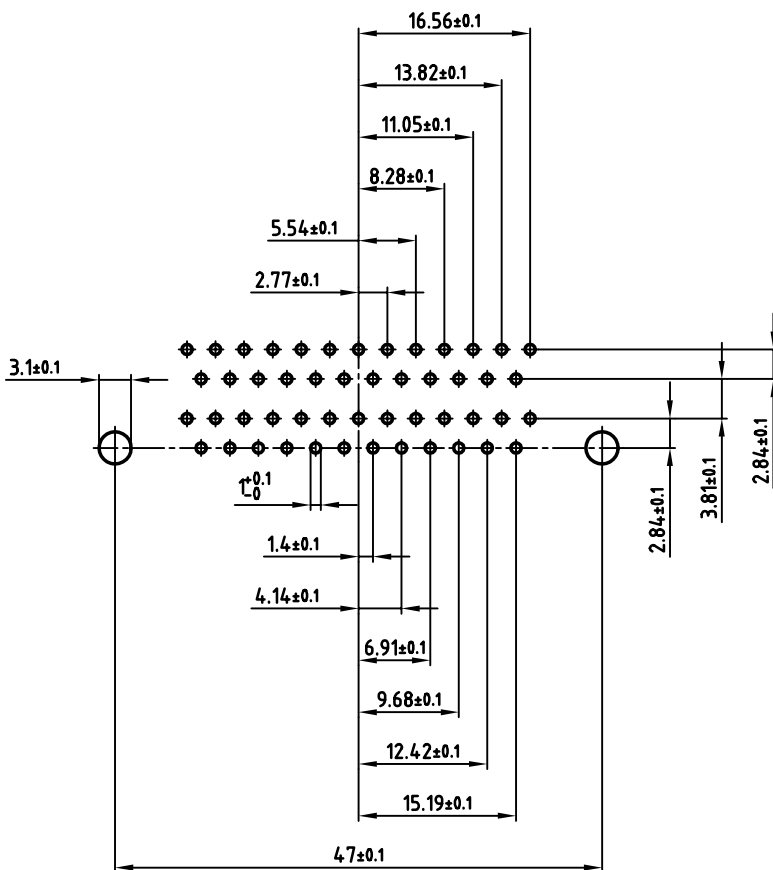
used for: D-SUB Dual Port



2x9 pos.



2x15 pos.



2x25 pos.

APPROVAL # FREIGABE # DEBLOCAGE # AUTORIZACION # APPROVAL

CUSTOMER APPROVAL DATE:

NAME: TITLE:

COMPANY NAME:

APPROVAL # FREIGABE # DEBLOCAGE # AUTORIZACION # APPROVAL

THIS DRAWING MAY NOT BE COPIED OR REPRODUCED IN ANY WAY, AND MAY NOT BE PASSED ON TO A THIRD PARTY, WITHOUT WRITTEN PERMISSION. OWNERSHIP AND COPYRIGHT OF CONEC GmbH DO NOT ALTER CAD DRAWING BY HAND

rev.	description	date	name
1 x b	Ä 1905	19.12.2003	Lehmen

tolerance	dim. in mm
2000	date
drawn	31.01. Barcinski
appd.	31.01. Mickenbecker
norm	DIN 41652
d-old	

scale: 2:1

material: SEE SHEET 1

title: **P.C.B. HOLE DRILLINGS**
DUAL PORT 19.05mm MALE / FEMALE
with threaded insert and clip

dwg no: AutoCAD 2000 DIN-A 3 sh:2/3

part no: SEE SHEET 1

