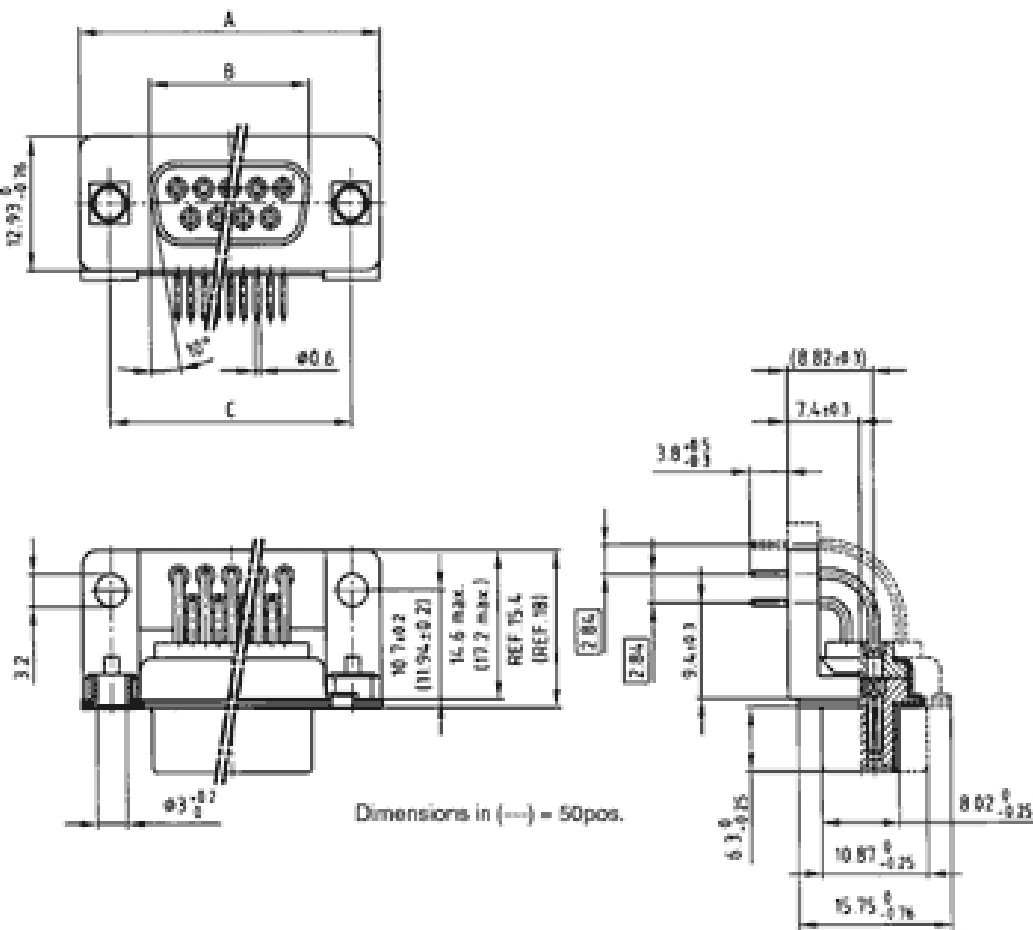


D-Sub Connector
Solder pin angled .370"
with mounting bracket
and through hole

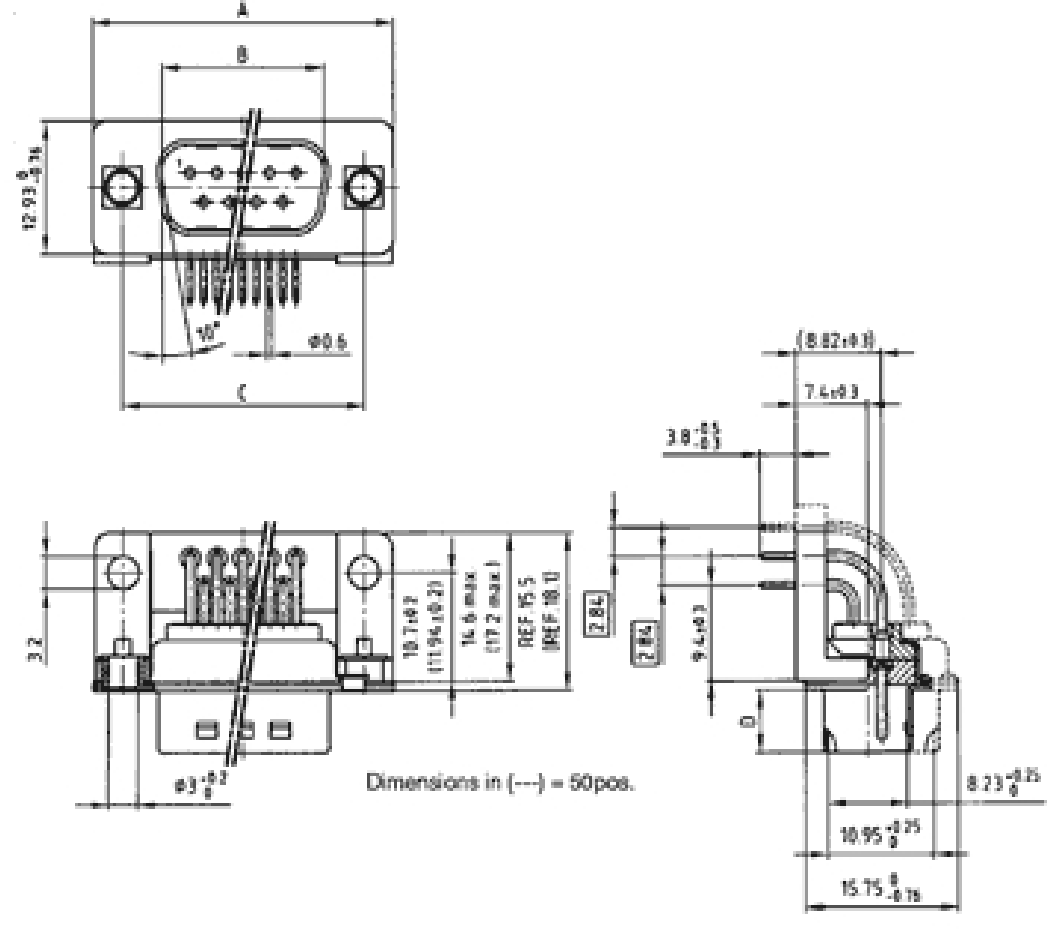
Directive 2002/95/EC
"RoHS"
Compliant

(click on the schematic(s) for a more detailed view)

Socket connector



Plug connector



Socket connector:

No. of pos.	A -0,76	B-0,25	C
9	31,19	16,46	25,00 ^{+0,12} _{-0,13}
15	39,52	24,79	33,30 ^{+0,15} _{-0,10}
25	53,42	38,50	47,04 ^{+0,13}
37	69,70	54,96	63,50 ^{+0,13}
50	67,31	52,55	61,10 ^{+0,14} _{-0,11}

Plug connector:

No. of pos.	A -0,76	B+0,25	C	D -0,30
9	31,19	16,79	25,00 ^{+0,12} _{-0,13}	6,12
15	39,52	25,12	33,30 ^{+0,15} _{-0,10}	6,12
25	53,42	38,84	47,04 ^{+0,13}	5,99
37	69,70	55,30	63,50 ^{+0,13}	5,99
50	67,31	52,68	61,10 ^{+0,14} _{-0,11}	5,99

Part Numbers

No. of Pos.	Socket connector	
	yellow zinc	tin-plated
9	162 A 10669 X	164 A 10669 X
15	162 A 10679 X	164 A 10679 X
25	162 A 10689 X	164 A 10689 X
37	162 A 10699 X	164 A 10699 X
50	162 A 10709 X	164 A 10709 X

No. of Pos.	Plug connector	
	yellow zinc	tin-plated with ground indent
9	161 A 10669 X	163 A 11719 X
15	161 A 10679 X	163 A 11729 X
25	161 A 10689 X	163 A 11739 X
37	161 A 10699 X	163 A 11749 X
50	161 A 10709 X	163 A 11759 X



REG.-Nr. 40000440



File #: E202784



File #: LR115000