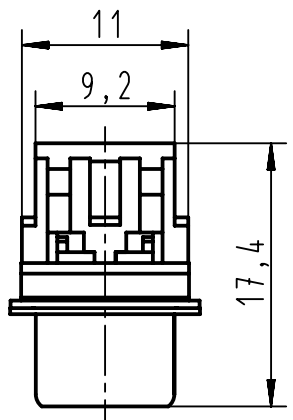
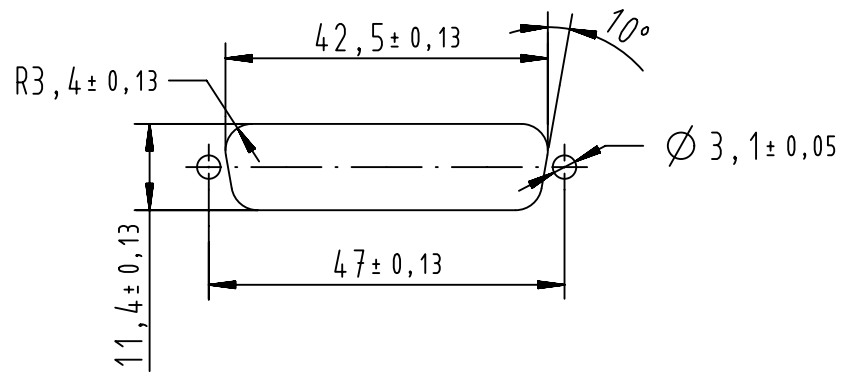
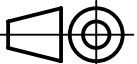



Recommended panel cutout dimensions  
for rear mounting  
According to CECC 75 301-802



After closing cover

 All Dimensions in mm Original Size DIN A4		Scale 2:1	Free size tol.		Ref.
 All rights reserved Department EC PD - FR		Created by DOUGE	Inspected by BAGDIKIAN	Standardisation HOFFMANN	Date 2013-04-23
HARTING Electronics GmbH D-32339 Espelkamp		Title D-Sub IDC 25P male straight			State Final Release
Part number 09663287700		Type TB	Number 0966328X700		Doc-Key / ECM-Nr. 100527201/UGD/001/A 5300000858839
Performance level PL2					Rev. A
Performance level PL3					Page 1/1

D	09663287700	PL2
	09663286700	PL3
	Part number	Performance level