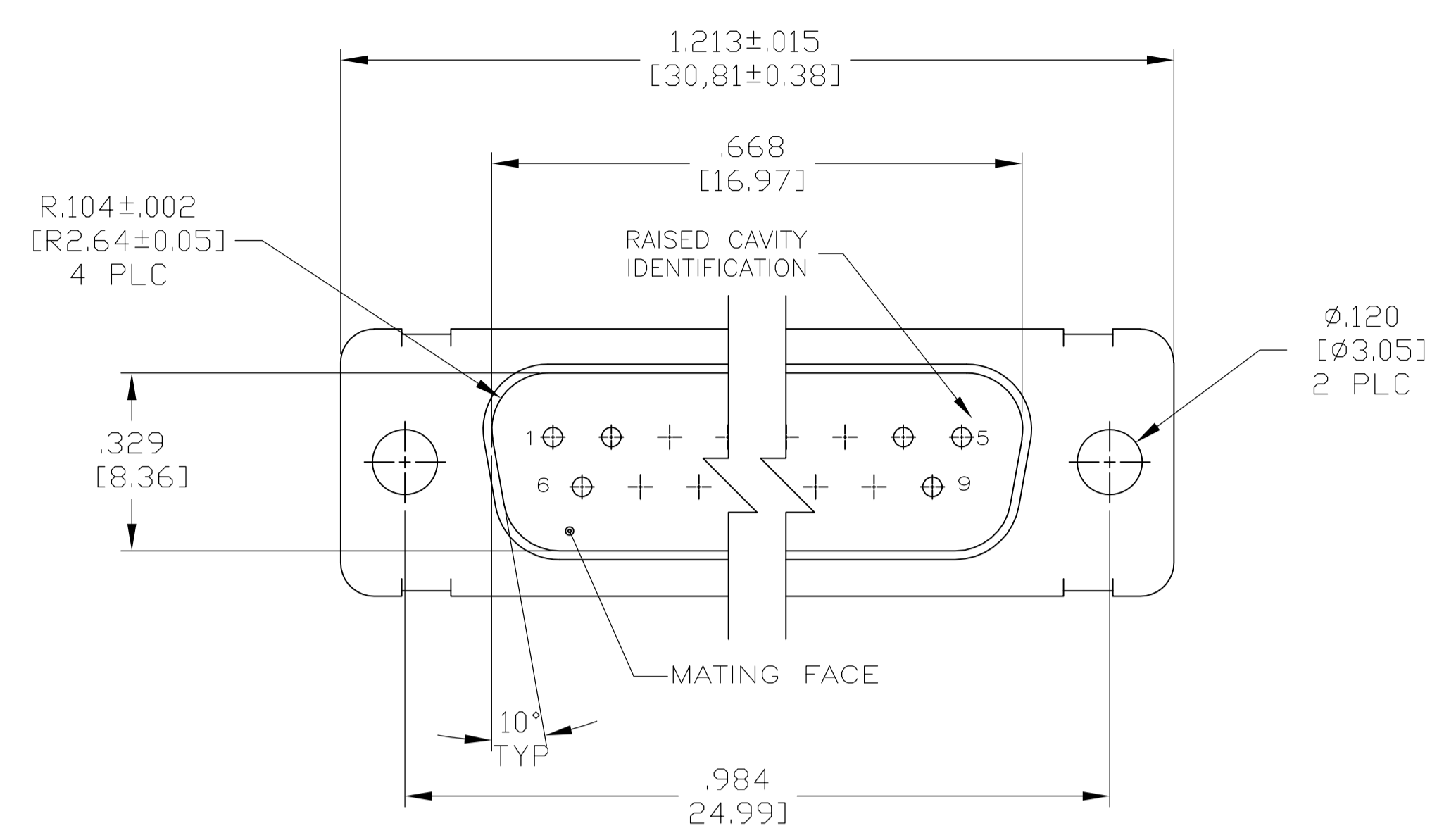
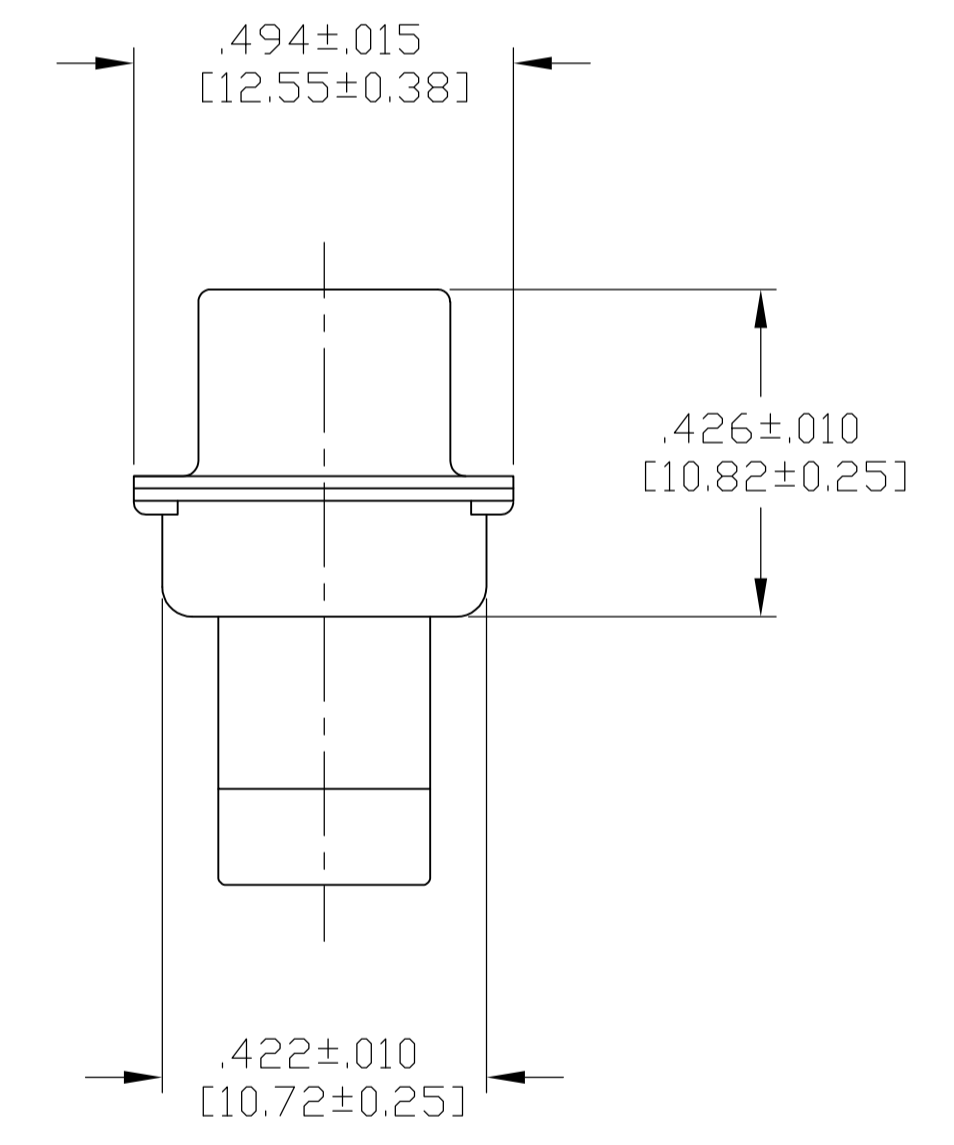
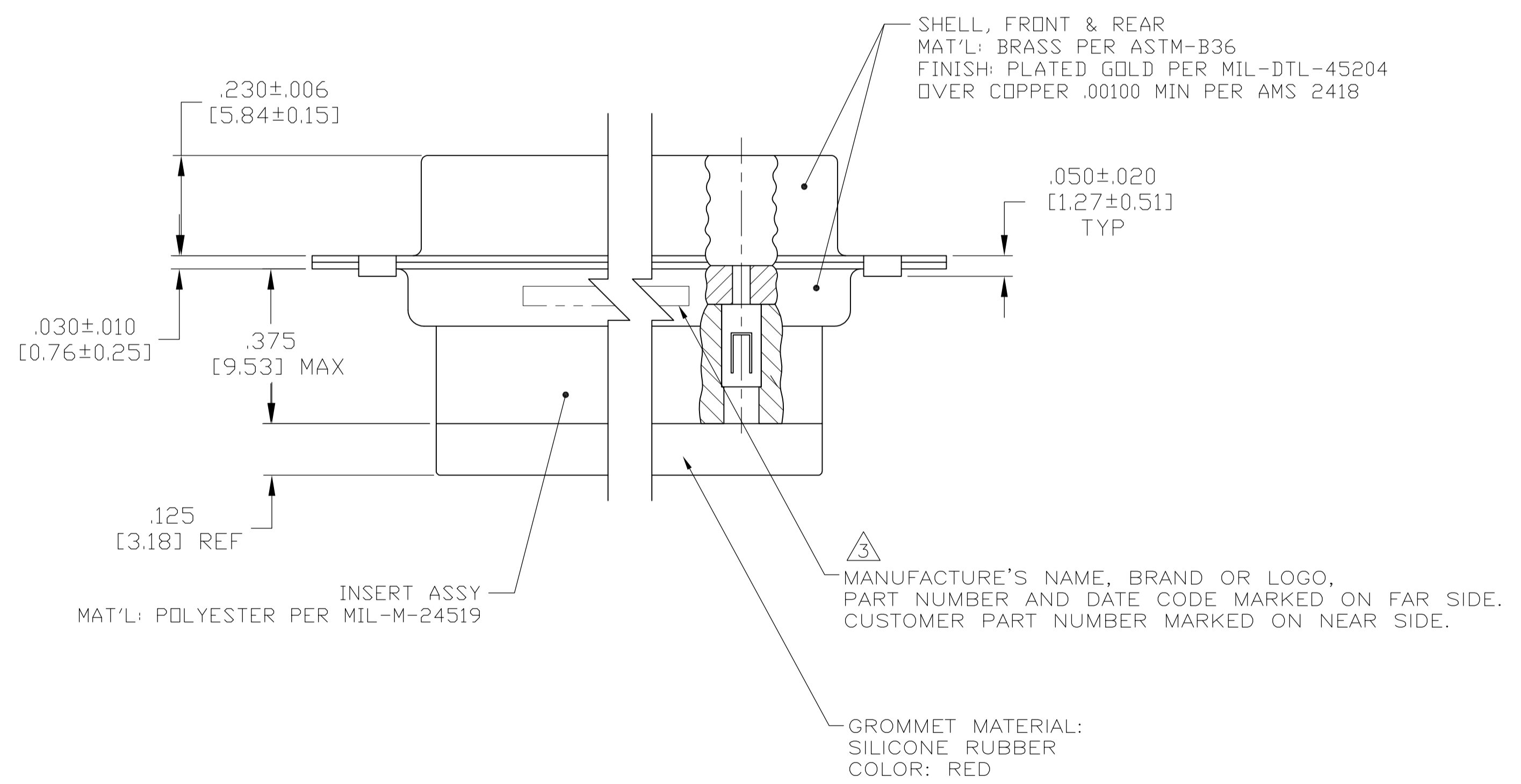


LOC		DIST		REVISIONS			
P	LTR	DESCRIPTION	DATE	DMN	APVD		
G		REV PER ECO-12-016000	4-9-09	RM	RL		



1. THIS CONNECTOR ASSEMBLY IS SUPPLIED WITH Be Cu CONTACT RETENTION CLIPS INSTALLED IN THE INSERT ASSEMBLY.
  2. THIS CONNECTOR ASSEMBLY MATES WITH ANY PLUG CONNECTOR WITH THE SAME INSERT ARRANGEMENT AND DIMENSIONAL REQUIREMENTS PER MIL-C-24308.
  3. MARKED WITH .047 [1.19]-.062 [1.57] HIGH CHARACTERS. FAR SIDE REFERS TO THE WIDE SIDE OF THE KEYSTONE. NEAR SIDE REFERS TO THE NARROW SIDE OF THE KEYSTONE.
  4. MAXIMUM WIRE INSULATION TO BE USED WITH THIS CONNECTOR ASSEMBLY IS .054 [1.37] DIAMETER.
5. SPECIAL REQUIREMENTS PER BOEING 1A01 DOCUMENT.
6. BUILT TO ORDER, NO INVENTORY OF THIS PART NUMBER IS TO BE KEPT. SINGLE LOT DATE CODE REQUIRED.



OBsolete

REMARKS	CUSTOMER MARKING	PART NUMBER
6/7	1A01-026PHW	1-211638-1
7	A70323-12013-026	211638-8
--	---	211638-4
7	2A014-031V-001	211638-2
6/7	1A01-026PHA	211638-1

THIS DRAWING IS A CONTROLLED DOCUMENT.		DIN C.C.THOMAS 4-9-09		Tyco Electronics Corporation Harrisburg, PA 17105-3608	
DIMENSIONS: INCHES [mm]		TOLERANCES UNLESS OTHERWISE SPECIFIED:		NAME	
0 PLC ± -		1 PLC ± -		PLUG ASSY, AMPLIMITE, 9 POSN., SIZE 1, SERIES 109 WITH GROMMET	
1 PLC ± -		2 PLC ± -		SIZE	
2 PLC ± -		3 PLC ± .005 [0.13]		CAGE CODE	
3 PLC ± -		4 PLC ± -		DRAWING NO	
4 PLC ± -		ANGLES ± -		RESTRICTED TO	
MATERIAL SEE CALLOUTS		FINISH SEE CALLOUTS		WEIGHT	
				A1 00779 C=211638	
CUSTOMER DRAWING		SCALE 4:1		SHEET 1 OF 1 REV G	