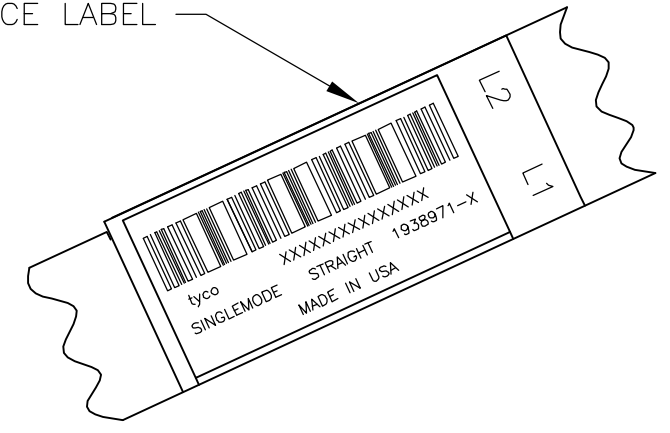
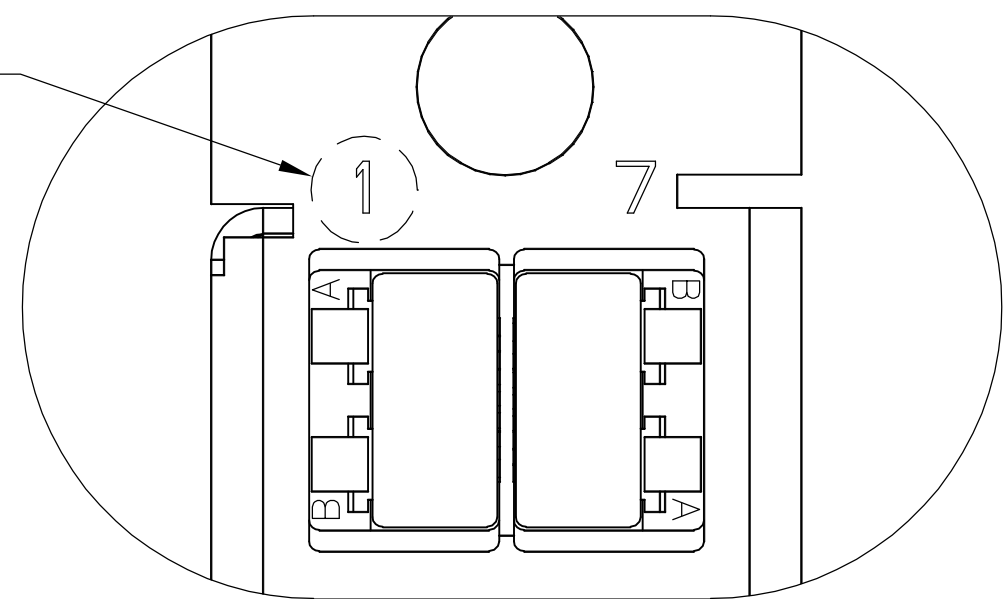
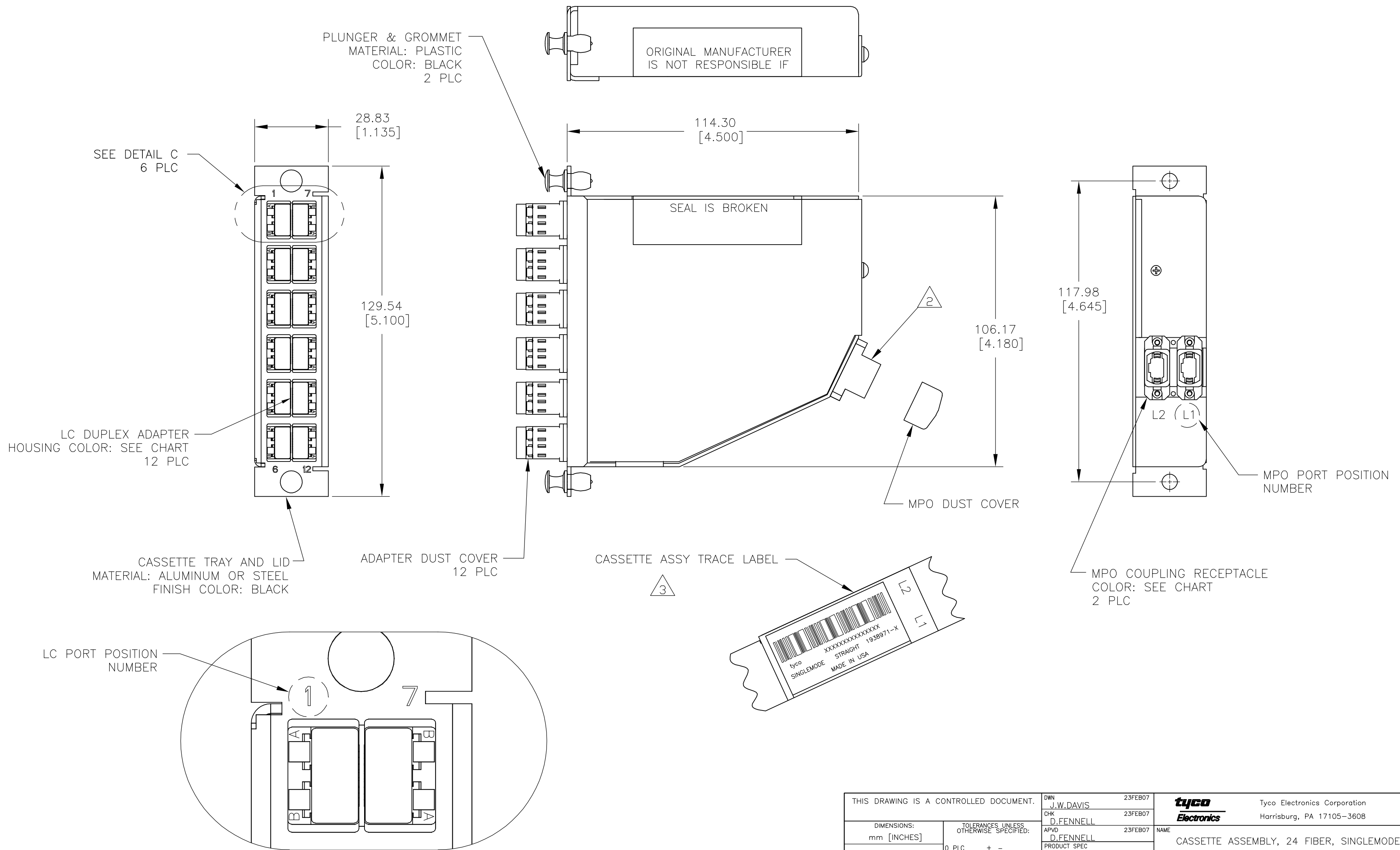


LOC	DIST	REVISIONS					
CE	16	P	LTR	DESCRIPTION	DATE	DWN	APVD
		A		RELEASED	23FEB07	JWD	DLF

D  
C  
B  
A

D  
C  
B  
A



THIS DRAWING IS A CONTROLLED DOCUMENT.		DWN	J.W.DAVIS	23FEB07		Tyco Electronics Corporation Harrisburg, PA 17105-3608			
DIMENSIONS: mm [INCHES]		CHK	D.FENNELL	23FEB07		NAME CASSETTE ASSEMBLY, 24 FIBER, SINGLEMODE MPO - LC, STRAIGHT	SIZE	CAGE CODE	DRAWING NO
TOLERANCES UNLESS OTHERWISE SPECIFIED: 0 PLC ± - 1 PLC ± - 2 PLC ± - 3 PLC ± - 4 PLC ± - ANGLES ± -		APVD	D.FENNELL	23FEB07	SCALE		NTS	SHEET	1 of 2
MATERIAL		APPLICATION SPEC			A2 00779		C=1938971		A
FINISH		WEIGHT			CUSTOMER DRAWING		SCALE NTS SHEET 1 of 2 REV A		

1938971

THIS DRAWING IS UNPUBLISHED. RELEASED FOR PUBLICATION  
 © COPYRIGHT BY TYCO ELECTRONICS CORPORATION. ALL RIGHTS RESERVED.

LOC	DIST	REVISIONS			
P	LTR	DESCRIPTION	DATE	DWN	APVD
CE	16	SEE SHEET 1	-	-	-

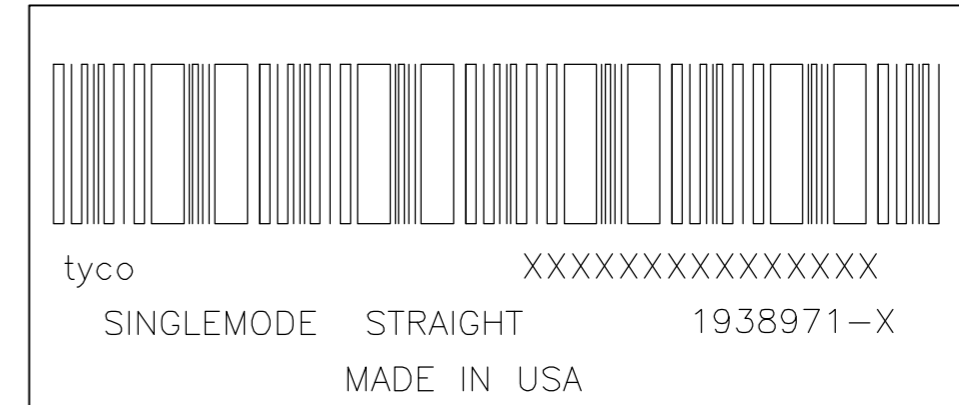
1. MAXIMUM CASSETTE ASSEMBLY LOSS: 1.25dB.

2. WHITE MARKING ON MPO TO BE FACING TOWARD TOP OF CONNECTOR MODULE. WHITE MARK INDICATES FIBER 1 SIDE

3. SEE TRACE LABEL DETAIL

4. A COPY OF CASSETTE ASSEMBLY LOSS TEST DATA WILL BE PLACED INSIDE OR WITH THE UNIT PACKAGE. CASSETTES WILL BE TESTED AT 1310nm & 1550nm WAVELENGTH.

5. PRODUCT AND PROCESSING MUST MEET REQUIREMENTS OF TYCO ELECTRONICS STANDARD 230-702



FIBER PATH – STRAIGHT

MPO L1 PORT POSITION NO	MPO L2 PORT POSITION NO	LC PORT POSITION NO
1	-	1B
2	-	1A
3	-	2B
4	-	2A
5	-	3B
6	-	3A
7	-	4B
8	-	4A
9	-	5B
10	-	5A
11	-	6B
12	-	6A
-	1	7B
-	2	7A
-	3	8B
-	4	8A
-	5	9B
-	6	9A
-	7	10B
-	8	10A
-	9	11B
-	10	11A
-	11	12B
-	12	12A

AQUA SECURE	AQUA SECURE	1-1938971-1
SLATE SECURE	SLATE SECURE	1-1938971-0
ROSE SECURE	ROSE SECURE	1938971-9
VIOLET SECURE	VIOLET SECURE	1938971-8
BROWN SECURE	BROWN SECURE	1938971-7
ORANGE SECURE	ORANGE SECURE	1938971-6
YELLOW SECURE	YELLOW SECURE	1938971-5
BLUE SECURE	BLUE SECURE	1938971-4
GREEN SECURE	GREEN SECURE	1938971-3
RED SECURE	RED SECURE	1938971-2
BLACK STANDARD	BLUE STANDARD	1938971-1
MPO COUPLING BUSHING COLOR & TYPE	LC ADAPTER COLOR & TYPE	PART NUMBER

THIS DRAWING IS A CONTROLLED DOCUMENT.		DWN J.W.DAVIS 23FEB07	Tyco Electronics Corporation Harrisburg, PA 17105-3608	
DIMENSIONS: mm [INCHES]		CHK D.FENNELL 23FEB07	NAME CASSETTE ASSEMBLY, 24 FIBER, SINGLEMODE MPO - LC, STRAIGHT	
TOLERANCES UNLESS OTHERWISE SPECIFIED:		APVD D.FENNELL 23FEB07	PRODUCT SPEC	
0 PLC ± - 1 PLC ± - 2 PLC ± - 3 PLC ± - 4 PLC ± - ANGLES ± - FINISH -		APPLICATION SPEC	SIZE A2	CAGE CODE 00779
MATERIAL -		WEIGHT -	DRAWING NO C=1938971	RESTRICTED TO -
CUSTOMER DRAWING			SCALE NTS	SHEET 2 of 2