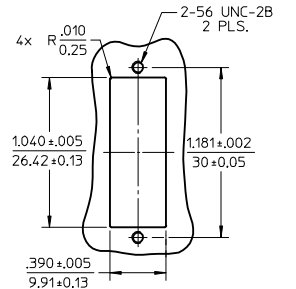
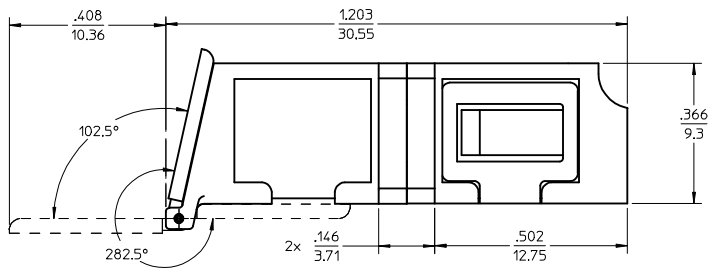
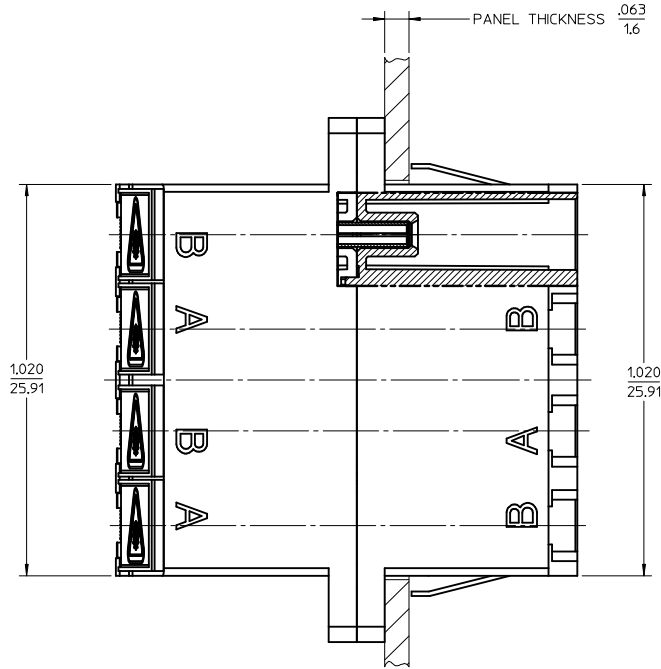
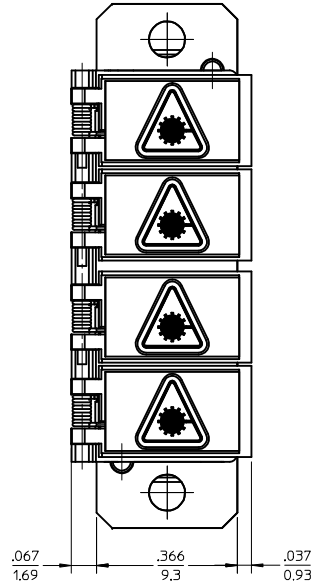
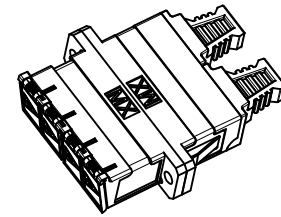
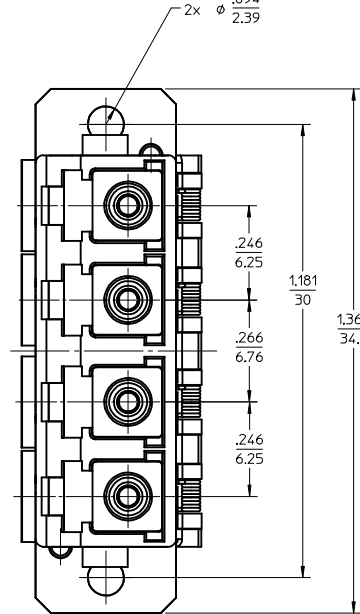


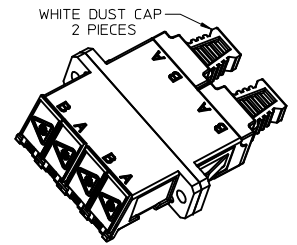
LC QUAD ADAPTER P/N	LC QUAD ADAPTER COLOR	SPLIT SLEEVE MATERIAL
106123-0200	BLUE	ZR
106123-0205*		
106123-1200	BEIGE	PHOSPHOR BRONZE
106123-1205*		
106123-2200	GREEN	ZR
106123-3200	AQUA	PHOSPHOR BRONZE
106123-3205*		



**RECOMMENDED
MOUNTING PATTERN
SCALE 1.5:1**



**ISO VIEW 2
SCALE 1.5:1**



**ISO VIEW 1
SCALE 1.5:1**

NOTES:

1. ALL DIMENSIONS ARE FOR REFERENCE.
2. DUST CAPS NOT SHOWN ON FRONT, BOTTOM AND RIGHT VIEW.
3. LC QUAD ADAPTER HAS SC DUPLEX ADAPTER FOOTPRINT.
- *4. P/Ns MARKED WITH(*) ARE BULK PACKED IN QUANTITIES OF 100 pcs.

ENTER DESCRIPTION IEC NO: MF-2013-0549 DRW:KPEVZNER 2013/03/04 CHKD: APPR:IGUMIN 2013/03/07 REV:	QUALITY SYMBOLS ▽=0 ▽=0	GENERAL TOLERANCES (UNLESS SPECIFIED)		DIMENSION STYLE IN/MM	SCALE 4:1	DESIGN UNITS INCH	THIRD ANGLE PROJECTION	
		mm	INCH	DRAWN BY PGIBL IN	DATE 2005/11/21	TITLE LC QUAD ADAPTER WITH SHUTTERS (SCREW AND SNAP MOUNT)		
		4 PLACES ±---	±---	CHECKED BY DATE	APPROVED BY DATE	MOLEX INCORPORATED		
		3 PLACES ±---	±---	MATERIAL NO. SEE TABLE		DOCUMENT NO. SD-106123-X200	SHEET NO. 1 OF 1	

DRAFT WHERE APPLICABLE MUST REMAIN WITHIN DIMENSIONS

THIS DRAWING CONTAINS INFORMATION THAT IS PROPRIETARY TO MOLEX INCORPORATED AND SHOULD NOT BE USED WITHOUT WRITTEN PERMISSION