

## Mounting flange - HC-B 32/48-AF - 1580524

Please be informed that the data shown in this PDF Document is generated from our Online Catalog. Please find the complete data in the user's documentation. Our General Terms of Use for Downloads are valid (<http://download.phoenixcontact.com>)

HEAVYCON-ADVANCE mounting flange for screw locking HC B 32/48



### Key commercial data

Packing unit	1 PCE
Custom tariff number	85389099
Country of origin	Germany

### Technical data

#### Ambient conditions

Ambient temperature (operation)	-40 °C ... 200 °C
---------------------------------	-------------------

#### General

Pg screw connection	None
Material	Zinc die-cast
Note	2 for every connector
Assembly instructions	In order to guarantee that the ground conductor contact functions even when plugged in at an angle, the two panel mounting flanges must have sufficient electrical contact with the metal mounting panel.

### Classifications

#### eCl@ss

eCl@ss 4.0	27140816
eCl@ss 4.1	27140816
eCl@ss 5.0	27189239
eCl@ss 5.1	27189239
eCl@ss 6.0	27261207

# Mounting flange - HC-B 32/48-AF - 1580524

## Classifications

eCl@ss

eCl@ss 7.0	27440210
eCl@ss 8.0	27440210

ETIM

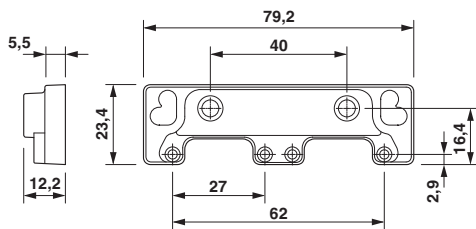
ETIM 2.0	EC000007
ETIM 3.0	EC000007
ETIM 4.0	EC000437
ETIM 5.0	EC002310

UNSPSC

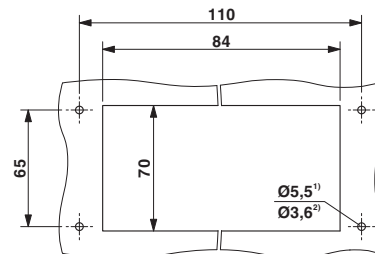
UNSPSC 6.01	31261501
UNSPSC 7.0901	31261501
UNSPSC 11	31261501
UNSPSC 12.01	31261501
UNSPSC 13.2	31261501

## Drawings

Dimensioned drawing



Dimensioned drawing



- 1) Standard M5 screw
- 2) Self-locking Torx® 20, M5