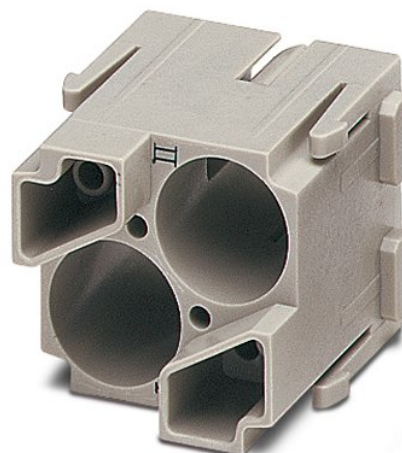



HC-M-EMV-MOD-ST

Order No.: 1678567

<http://eshop.phoenixcontact.de/phoenix/treeViewClick.do?UID=1678567>HEAVYCON contact insert module, series M EMV (EMC), male, 2-
pos., for HC-M-EMV male contacts

Commercial data

GTIN (EAN)	 4 017918 167639
sales group	D042
Pack	2 pcs.
Customs tariff	85369010
Catalog page information	Page 460 (PC-2009)

Product notes

WEEE/RoHS-compliant since:
11/29/2006

[http://
www.download.phoenixcontact.com](http://www.download.phoenixcontact.com)
Please note that the data given
here has been taken from the
online catalog. For comprehensive
information and data, please refer
to the user documentation. The
General Terms and Conditions of
Use apply to Internet downloads.

Technical data

Electrical characteristics

Note	For housing HC-B6 to B48, for housing HC-ADVANCE-B6 to B24, hinged retaining frame HC-M-MHR... necessary
Ambient temperature (operation)	-40 °C ... 125 °C

Mechanical characteristics

Insertion/withdrawal cycles	≥ 500
-----------------------------	-------

General characteristics

Number of module slots	2
Inflammability class acc. to UL 94	V0
Assembly instructions	Housing height ≥ 72 mm. Plug-in connections may only be operated only when there is no load/voltage.

Material data

Contact carrier material	PC
--------------------------	----

Certificates / Approvals

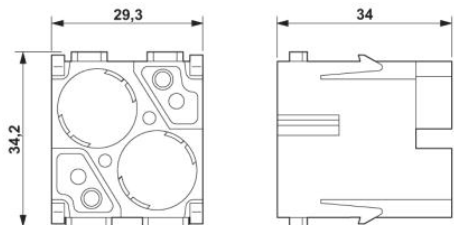


Certification

CUL, GOST, UL

Diagrams/Drawings

Dimensioned drawing



Male insert

Address

PHOENIX CONTACT Deutschland GmbH
Flachmarktstr. 8
32825 Blomberg, Germany
Phone +49 5235 3 12000
Fax +49 5235 3 41200
<http://www.phoenixcontact.de>



© 2010 Phoenix Contact
Technical modifications reserved;