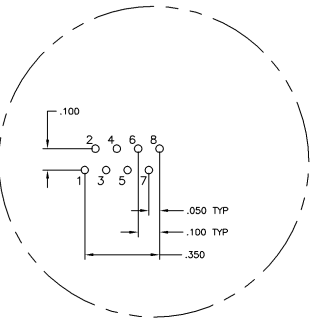
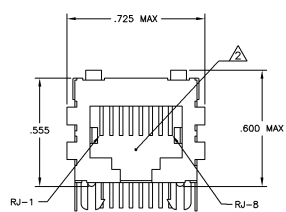
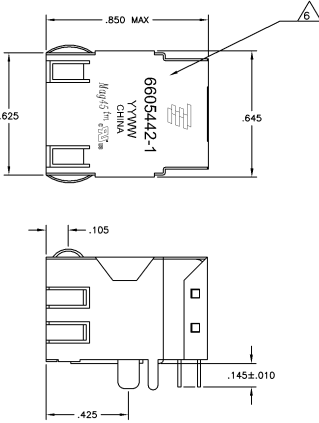


THIS DRAWING IS UNCLASSIFIED  
 UNLESS OTHERWISE INDICATED  
 ALL RIGHTS RESERVED

REVISED		REVISED		REVISED	
DATE	BY	DATE	BY	DATE	BY
AA	22				
REV PER ECO-08-030299		12m-0308		VL TX	

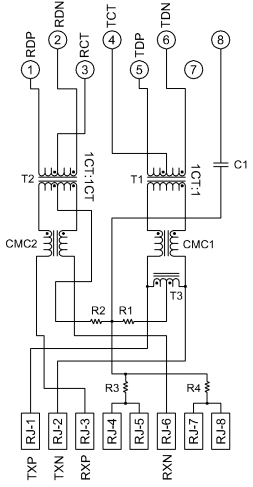
MECHANICAL:



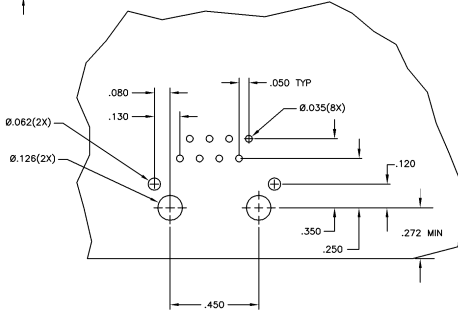
Pin Designations

- NOTES**
- MATERIALS  
 HOUSING - THERMOPLASTIC PET POLYESTER FLAMMABILITY RATING UL 94V-0  
 SHIELD - .010" THICK C28000 BRASS PREPLATED WITH 30μm INH SEMI-BRIGHT NICKEL, SOLDER TABS POST-DIPPED WITH 100μm INH SAC SOLDER  
 MOD JACK CONTACTS - .0157" x .018", PHOSPHOR BRONZE, 50μm INH OVERALL NICKEL UNDERPLATE, WITH SELECT 50μm INH HARD GOLD FINISH PLATE. SOLDER TAILS WITH 100μm INH MATTE TIN AND/OR SAC SOLDER DIP.
  - MAGNETICS  
 -APPLICATION: 10/100 BASE-T  
 -IMPEDANCE: 100 OHMS  
 -TURNS RATIO (CHIP CABLE): TX = 11, RX = 11  
 -OPEN CIRCUIT INDUCTANCE (OCL): 350nH MIN @100MHz, 0 IV RMS, 8mADC BIAS FROM 0°C TO 70°C, TX AND RX  
 -PERFORMANCE @ 25°C  
 INSERTION LOSS (IL): 1.1dB MAX FROM 0.5MHz TO 100MHz  
 RETURN LOSS (RL): 19dB MIN FROM 0.5MHz TO 30MHz  
 18-20dBi @ 500MHz MIN FROM 30 MHz TO 60MHz  
 12dB MIN FROM 60 MHz TO 80MHz  
 CROSSTALK ATTENUATION: 35dB MIN FROM 0.5MHz TO 40MHz  
 33-20dBi @ 500MHz MIN FROM 40 MHz TO 100MHz  
 COMMON MODE REJECTION RATIO (CMRR): 30dB MIN FROM 0.5MHz TO 100MHz  
 ISOLATION VOLTAGE: COMPLIES WITH IEEE802.3 2002, PARA 23.5.1.1, ITEM b.
4. OPERATING TEMPERATURE: FROM 0°C TO 70°C
- △ INDICATED CONNECTIONS ARE FOR NIC CONFIGURATION. THE MAGNETICS ARE ASYMMETRICAL, AND THEREFORE DO NOT SUPPORT AUTO-MDIX
- △ TYCO ELECTRONICS LOGO, PART NUMBER, DATE CODE, COUNTRY OF ORIGIN AND AGENCY APPROVAL MARKING IN APPROXIMATE LOCATION SHOWN
7. THE PART IS RECOMMENDED FOR WAVE SOLDERING PROCESS. PREHEAT TEMPERATURE IS 120°C TO 160°C, 120 SECONDS TO 180 SECONDS, PEAK WAVE SOLDERING TEMPERATURE IS 260°C MAX, 10 SECONDS MAX.

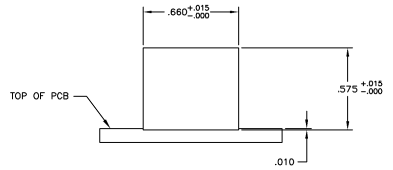
414 10/100 BASE-T CIRCUIT



C1=1000 pF, 2kV DECOUPLING CAPACITOR  
 R1-R4 = 75 OHMS, 1/16 W RESISTORS



Suggested PCB Layout  
 (Component Side)



Suggested Panel Cutout

6605442-1

PART NUMBER

THIS DRAWING IS A CONTROLLED DOCUMENT		DATE		REVISED		REVISED	
DESIGNED BY		DRAWN BY		CHECKED BY		APPROVED BY	
PART NO.		REV		DATE		BY	
6605442-1		1		12-03-08		VL TX	
DESCRIPTION		QUANTITY		UNIT PRICE		TOTAL PRICE	
1X1 M045T010 MODULAR JACK, SHIELDED, DECOUPLING CAPACITOR, NO LEADS							
MATERIAL		SCALE		SHEET		OF	
CUSTOMER DRAWING		A1		1		1	