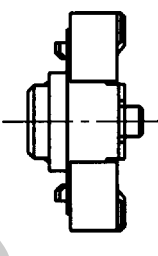
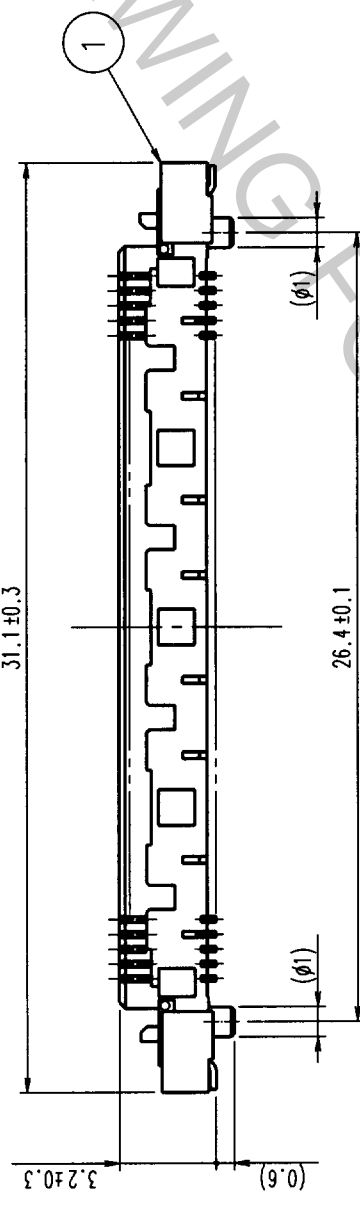
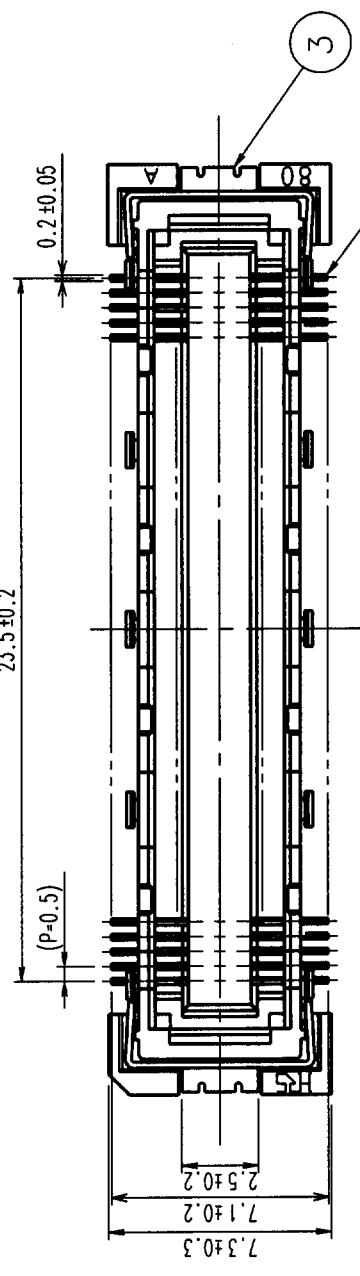
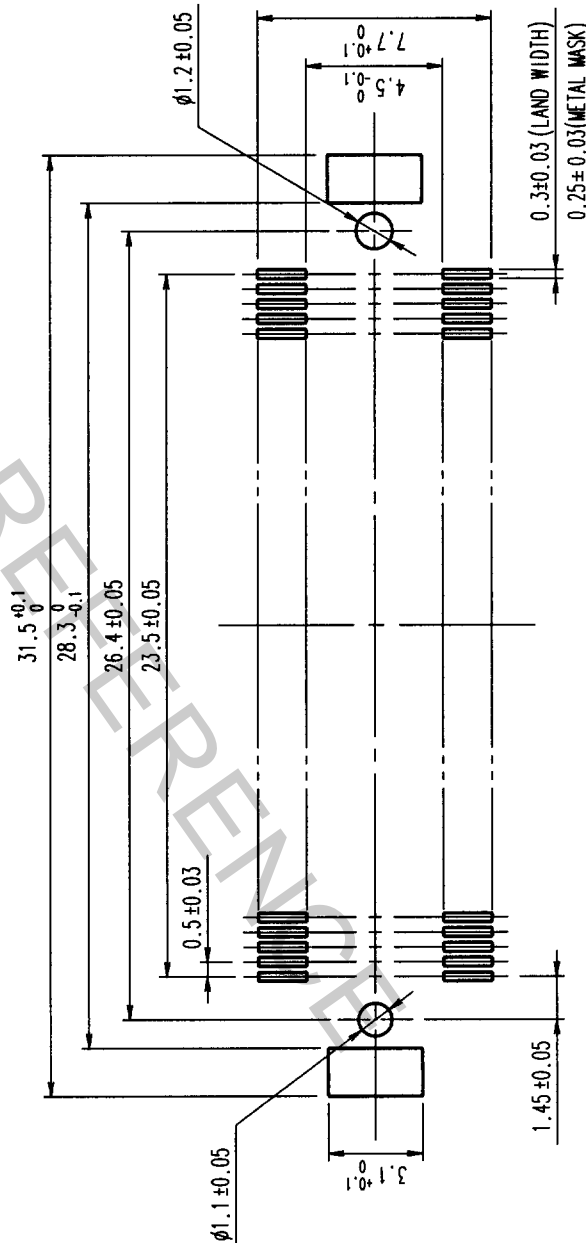


NO.	MATERIAL	FINISH, REMARKS	DRAWN	DESIGNED	CHECKED	APPROVED	RELEASED
3	PHOSPHOR BRONZE	TIN PLATED					
2	PHOSPHOR BRONZE	CONTACT AREA: GOLD (0.1μm) OVER NICKEL LEAD: GOLD PLATED (FLASH) OVER NICKEL					
1	LCP	BEIGE UL94V-0					

NO.	DESCRIPTION OF REVISIONS	BY	CHKD	DATE	COUNT	DESCRIPTION OF REVISIONS	BY	CHKD	DATE
1									
2									
3									



RECOMMENDED LAND PATTERN



- NOTES**
- 1 SMT LEAD-COPLANARITY: 0.1 MAX.
 - 2 THIS PRODUCT HAS NO POLARITY TO MOUNT ON THE RECOMMENDED LAND PATTERN.

TO	
PCK	

DRAWING NO.	EDC3-151984	PART NO.	FX10A-96S-SV
SCALE	4 : 1	CODE NO.	CL570-0241-9
UNITS	mm		