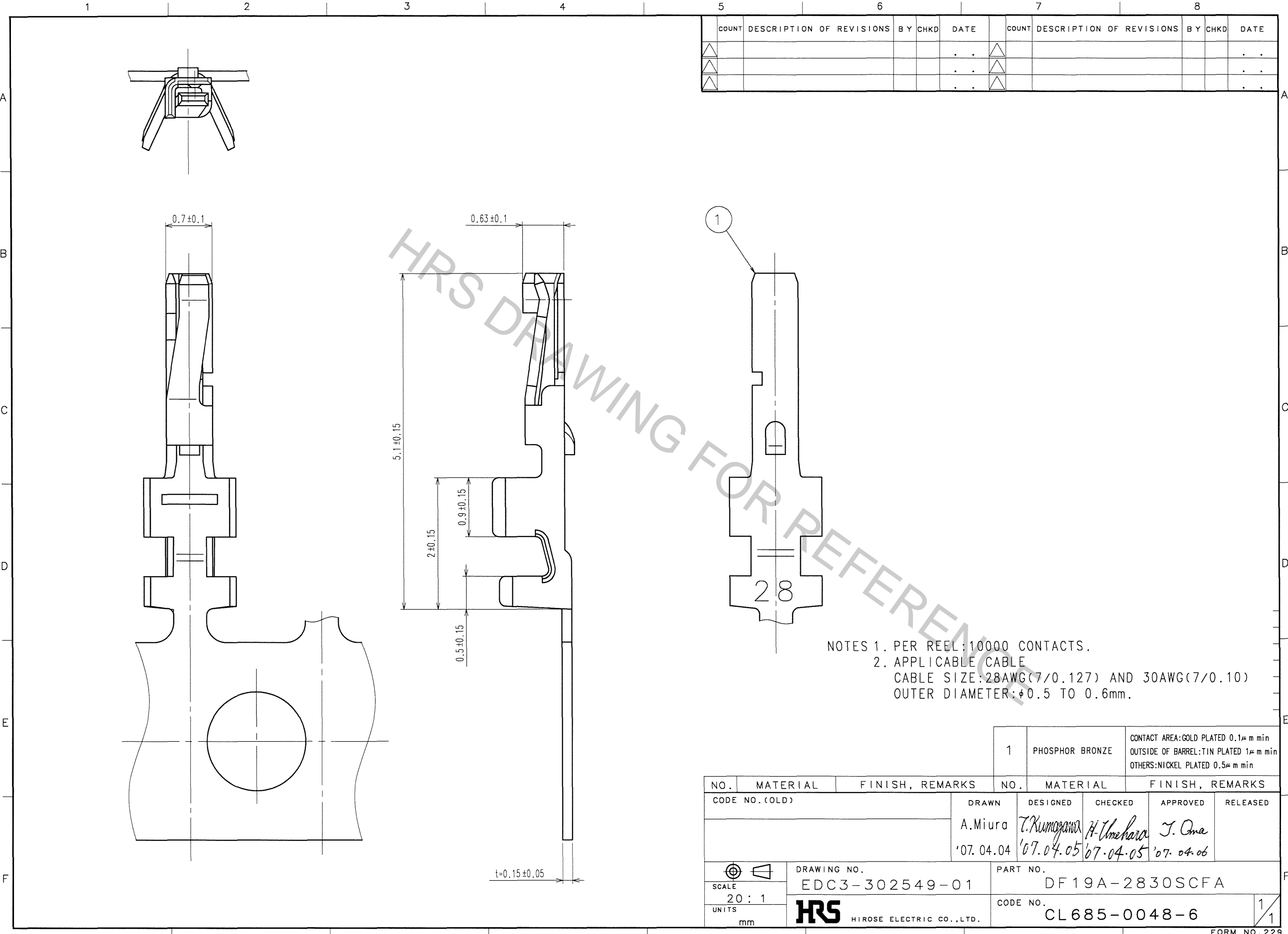


Apr.1.2017 Copyright 2017 HIROSE ELECTRIC CO., LTD. All Rights Reserved.



COUNT	DESCRIPTION OF REVISIONS	BY	CHKD	DATE	COUNT	DESCRIPTION OF REVISIONS	BY	CHKD	DATE
△				..	△				..
△				..	△				..
△				..	△				..

NOTES 1. PER REEL: 10000 CONTACTS.
 2. APPLICABLE CABLE
 CABLE SIZE: 28AWG(7/0.127) AND 30AWG(7/0.10)
 OUTER DIAMETER: $\phi 0.5$ TO 0.6 mm.

TO

1	PHOSPHOR BRONZE	CONTACT AREA: GOLD PLATED $0.1 \mu\text{m}$ min OUTSIDE OF BARREL: TIN PLATED $1 \mu\text{m}$ min OTHERS: NICKEL PLATED $0.5 \mu\text{m}$ min					
NO.	MATERIAL	FINISH, REMARKS		NO.	MATERIAL	FINISH, REMARKS	
CODE NO. (OLD)		DRAWN	DESIGNED	CHECKED	APPROVED	RELEASED	
		A.Miura	T.Kumogawa	H.Umehara	J.Oma		
		'07.04.04	'07.04.05	'07.04.05	'07.04.06		
DRAWING NO. EDC3-302549-01		PART NO. DF19A-2830SCFA		CODE NO. CL685-0048-6		1/1	
SCALE 20:1		UNITS mm		HRS HIROSE ELECTRIC CO., LTD.		FORM NO. 229	

