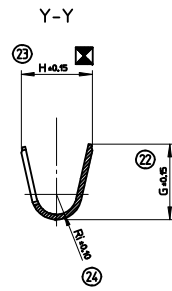
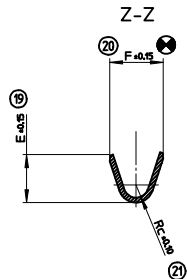
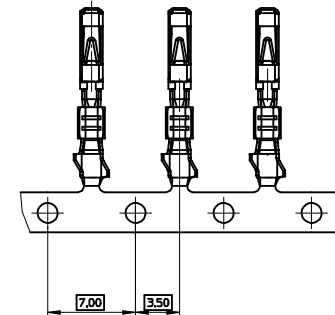
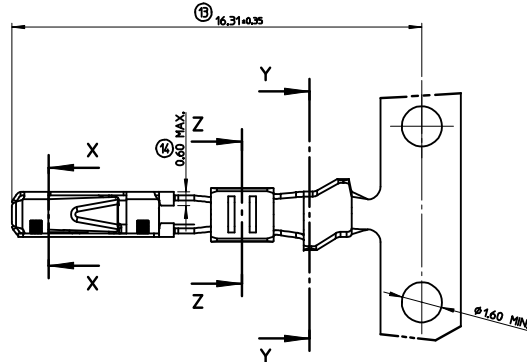
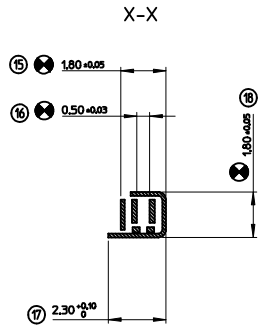
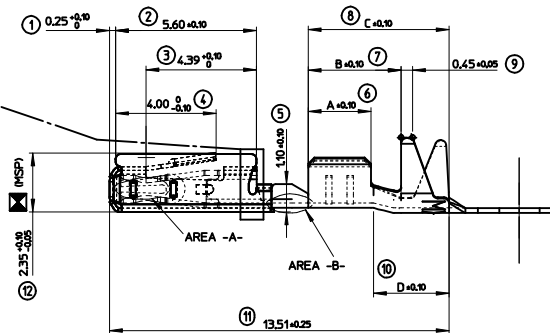


FORME ADMISE
ALLOWED VERSION



	MOLEX REFERENCE	AREA -A- (GAP AREA)	AREA -B-	CRIMPING AREA	Wire size range	Longeurs Length	Sertissage Conducteur Wire Crimp	Sertissage Isolant Insulation Crimp	Poids Weight
TIN PLATED VERSION	0986581211	HOT TIN DIP Sn = 1.0 to 3.0 µm			0.22 to 0.60 mm ²	A-2.50 B-3.70 C-5.60 D-3.00	E-1.90 F-2.10 Rc-0.50	G-2.90 H-2.80 Ri-0.80	0.1600 g
GOLD PLATED VERSION	0986581221	Au= 0.4 µm MIN. Ni= 1.0 µm MIN.		Sn = 1.0 to 5.0 µm MIN. Ni = 1.0 µm MIN.					
GOLD PLATED VERSION	0986581231	Au= 0.4 µm MIN. Ni= 1.0 µm MIN.	Au= 0.4 µm MIN. Ni= 1.0 µm MIN.	Sn = 1.0 to 5.0 µm MIN. Ni = 1.0 µm MIN.					
TIN PLATED VERSION	0986581212	HOT TIN DIP Sn = 1.0 to 3.0 µm							
GOLD PLATED VERSION	0986581222	Au= 0.4 µm MIN. Ni= 1.0 µm MIN.		Sn = 1.0 to 5.0 µm MIN. Ni = 1.0 µm MIN.	0.75 mm ²	A-2.80 B-3.70 C-5.60 D-2.70	E-2.25 F-2.25 Rc-0.50	G-2.90 H-2.80 Ri-0.80	0.1600 g
GOLD PLATED VERSION	0986581232	Au= 0.4 µm MIN. Ni= 1.0 µm MIN.	Au= 0.4 µm MIN. Ni= 1.0 µm MIN.	Sn = 1.0 to 5.0 µm MIN. Ni = 1.0 µm MIN.					
TIN PLATED VERSION	0986581213	HOT TIN DIP Sn = 1.0 to 3.0 µm							
GOLD PLATED VERSION	0986581223	Au= 0.4 µm MIN. Ni= 1.0 µm MIN.		Sn = 1.0 to 5.0 µm MIN. Ni = 1.0 µm MIN.					
GOLD PLATED VERSION	0986581233	Au= 0.4 µm MIN. Ni= 1.0 µm MIN.	Au= 0.4 µm MIN. Ni= 1.0 µm MIN.	Sn = 1.0 to 5.0 µm MIN. Ni = 1.0 µm MIN.	0.22 to 0.50 mm ²	A-2.50 B-3.70 C-5.60 D-3.00	E-1.80 F-1.80 Rc-0.40	G-2.30 H-2.30 Ri-0.70	0.1600 g

NOTE:

- MATERIAL: CONTACT BODY: HIGH CONDUCTIVE COPPER ALLOY.
SLEEVE: STAINLESS STEEL.
- PACKAGING SPECIFICATION: PK-98658-006.
- CRIMPING PARAMETERS AND CRIMPING TOOL DEFINITION: SEE CS-98658-001.

INDICATION DIMENSIONS S.P.C.
DENOTES S.P.C DIMENSIONS
 INDICATION DIMENSIONS DETERMINANT LES
CAPABILITIES MACHINE
DENOTES DIMENSIONS DETERMINING THE
MACHINE'S ABILITIES
 INDICATION DIMENSIONS FONCTIONNELLES
DENOTES FUNCTIONAL DIMENSIONS
 QUANTITE PAR FEUILLE INDIVIDUELLE
QUANTITY PER INDIVIDUAL SHEET
 - 2 - 4 - 0

REV LOC J1 2014/03/07 2014/03/07 2014/04/16 CHKO:MANDRE APPR:DJUCLOS	QUALITY SYMBOLS	GENERAL TOLERANCES (UNLESS SPECIFIED)	DIMENSION STYLE	SCALE	DESIGN UNITS	FIRST ANGLE PROJECTION
		m/m INCH	MM ONLY	10:1	METRIC	
		4 PLACES ± --- ± ---	DRAWN BY DATE	TITLE		
		3 PLACES ± --- ± ---	JTAMSSON 1998/06/01	MOX 0.63 TERMINAL		
	2 PLACES ± 0. ± ---	CHECKED BY DATE	RECEPTACLE TERMINAL			
	1 PLACE ± 0. ± ---	MANDRE 1999/10/14	GENERIC CONTROL DRAWING			
	0 PLACE ± 0. ±	APPROVED BY DATE	molex			
		CBOUCHAN 1999/10/14	DOCUMENT NO. SD-98658-004			
	ANGULAR ±1/2°	MATERIAL NO.	SHEET NO.			
	DRAFT WHERE APPLICABLE MUST REMAIN WITHIN DIMENSIONS	SEE CHART	1 OF 1			
		THIS DRAWING CONTAINS INFORMATION THAT IS PROPRIETARY TO MOLEX INCORPORATED AND SHOULD NOT BE USED WITHOUT WRITTEN PERMISSION				