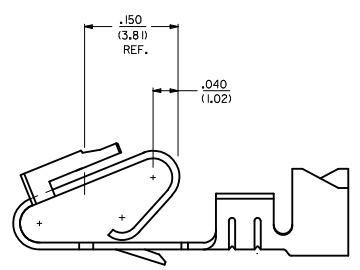
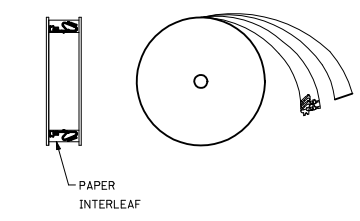


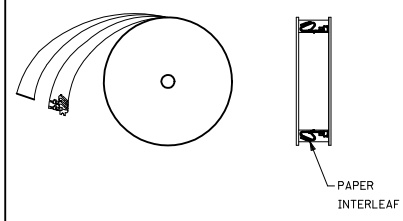
ALTERNATE GEOMETRY  
SEE NOTE 10



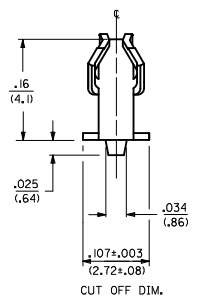
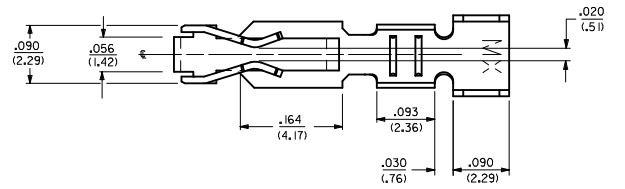
SELECTIVE PLATING  
LOCATION



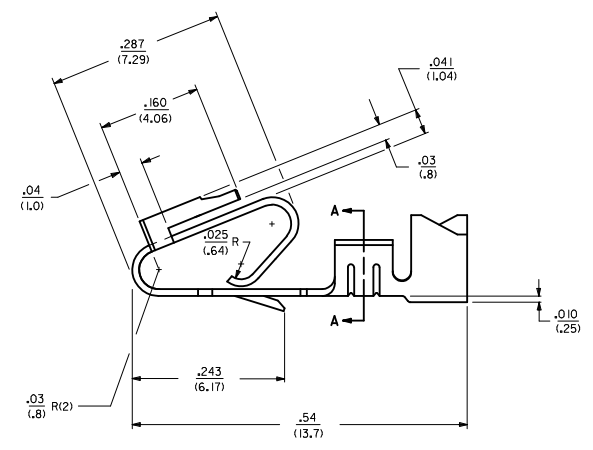
WINDING DETAIL 'A'



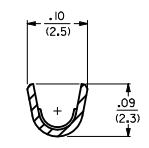
WINDING DETAIL 'B'



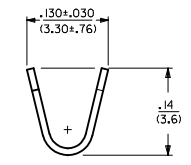
CUT OFF DIM.



- NOTES:
1. MATERIAL: SEE LEGEND
  2. FINISH:
    - 909 - OVERALL HOT TIN DIP: .000100/(0,00254) MIN.
    - 154 - OVERALL TIN: .000100/(0,00254) MIN. OVER .000050/(0,00127) MIN. NICKEL.
    - 555 - SELECT HARD GOLD: .000015/(0,00038) MIN. OVERALL NICKEL: .000030/(0,00076) MIN.
    - 558 - SELECT HARD GOLD: .000030/(0,00076) MIN. OVERALL NICKEL: .000050/(0,00127) MIN.
    - OVERALL HARD GOLD FLASH: .000002/(0,00005) MIN.
    - 561 - SELECT HARD GOLD: .000030/(0,00076) MIN. OVERALL NICKEL: .000050/(0,00127) MIN.
  3. PRODUCT SPECIFICATION: PS-40-02
  4. PACKAGING SPECIFICATION: CHAIN FORM: SEE PK-6838-001  
LOOSE FORM: SEE PK-2759-001
  5. TERMINAL FOR USE IN HOUSING SERIES 6442 AND 41695.
  6. SEE 7258 SERIES FOR THIS PART WITH CRIMP FOR 22-26 AWG. WIRE.
  7. CRIMP FOR 18 TO 20 GA. WIRE WITH MAX. INSULATION DIA. OF .100(2,79). STRIP LENGTH OF .125/100 / (3,18/2,54)
  8. DIMENSIONS GIVEN ACROSS CENTERLINES ARE SYMMETRICAL ABOUT THOSE CENTERLINES WITHIN HALF THE TOTAL TOLERANCE.
  9. THIS PART CONFORMS TO CLASS B REQUIREMENTS OF COSMETIC SPECIFICATION PS-45499-002.
  10. ALTERNATE GEOMETRY PRESENT ON SOME PART NUMBERS. SEE SHEET 2.



SECTION A-A



- LEGEND: 6838- ( )
- WINDING
    - A= PER DETAIL A
    - BLANK= PER DETAIL B
  - FORM
    - BLANK= CHAIN
    - L= LOOSE
  - PLATING
    - SEE NOTE 2
- MATERIAL:  
(.27)/.0106 THK  
BLANK=BRASS  
A=PHOS BRONZE

102 TO 154 PLTIG. IEC NO. UCF2012-1821 DRAWN BY: DRW/MK/STROH CHECKED BY: CHY/DK/KIPPER APPROVED BY: APPR/FJ/SMITH	QUALITY SYMBOLS	GENERAL TOLERANCES (UNLESS SPECIFIED)	DIMENSION STYLE	SCALE	DESIGN UNITS	THIRD ANGLE PROJECTION	
	∇=0 ∇=0 ∇=0	mm INCH 4 PLACES ± --- ± --- 3 PLACES ± --- ± .010 2 PLACES ± 0.25 ± .015 1 PLACE ± 0.36 ± --- ANGULAR ±1/2°	IN/MM DRAWN BY: GUZIK DATE: 11/15/89 CHECKED BY: PATEL DATE: 11/15/89 APPROVED BY: LENZ DATE: 11/15/89	---	---	INCH	Molex MOLEX INCORPORATED
	DRAFT WHERE APPLICABLE MUST REMAIN WITHIN DIMENSIONS	MATERIAL NO. SEE CHART	DOCUMENT NO. SD-6838	TITLE TRIFURCON TERMINAL CRIMP TYPE, .156 CENTERS 18 TO 20 AWG WIRE			
	AR	SIZE D	THIS DRAWING CONTAINS INFORMATION THAT IS PROPRIETARY TO MOLEX INCORPORATED AND SHOULD NOT BE USED WITHOUT WRITTEN PERMISSION				

2	AR
1	AR
SHT	REV

20 19 18 17 16 15 14 13 12 11 10 9 8 7 6 5 4 3 2 1

6838-(\*)\*\*

PART NO.	ENG. NO.	
08-50-0187	6838-(P909)	SEE NOTE 1
08-50-0189	6838-(P909)L	SEE NOTE 1
08-50-0275	6838-(P909)-A	

6838-A(\*)\*\*

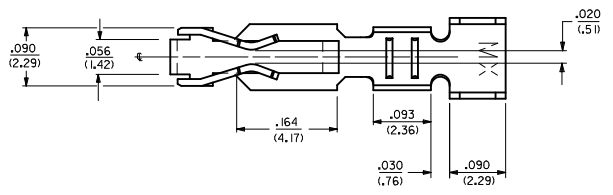
PART NO.	ENG. NO.	
08-58-0187	6838-A(P558)	
08-58-0189	6838-A(P558)L	
08-52-0112	6838-A(P909)	SEE NOTE 1
08-52-0113	6838-A(P909)L	SEE NOTE 1
08-50-0024	6838-A(154)	
08-50-0251	6838-A(154)L	
08-58-0105	6838-A(P555)	
08-58-0106	6838-A(P555)L	
08-58-0110	6838-A(P56 I)	SEE NOTE 1
08-58-0111	6838-A(P56 I)L	SEE NOTE 1
08-58-0118	6838-A(56 I)	
08-58-0119	6838-A(56 I)L	

NOTES:

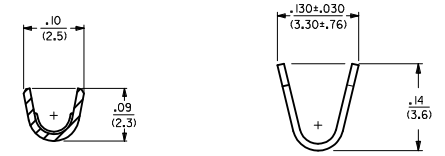
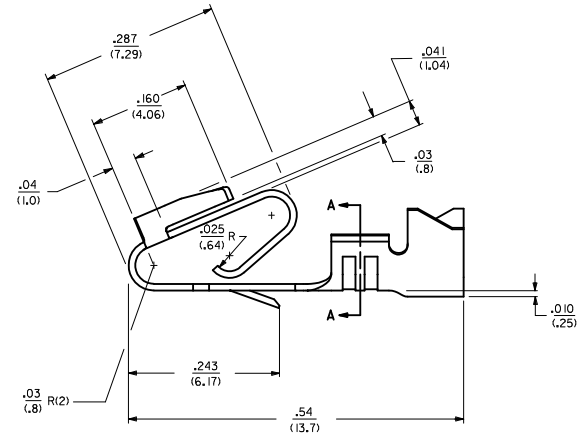
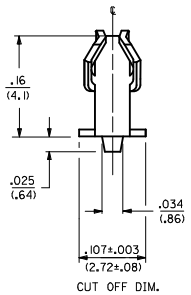
1. PART MANUFACTURED WITH ALTERNATE GEOMETRY. SEE SHEET 1.

<b>SEE SHEET 1</b> IEC NO: UCF2012-1821 DRAWN BY: DRW:MMSTROH 2012/01/04 CHECKED BY: CHY:DKH/KIPPER 2012/01/05 APPR:FSM/TH 2012/02/02	<b>QUALITY SYMBOLS</b> ▽=0 ▽=0 ▽=0	<b>GENERAL TOLERANCES (UNLESS SPECIFIED)</b>		DIMENSION STYLE <b>IN/MM</b>	SCALE ---	DESIGN UNITS INCH	THIRD ANGLE PROJECTION		
		4 PLACES #--- #--- 3 PLACES #--- #--- 2 PLACES #--- #--- 1 PLACE #--- #---	mm INCH	DRAWN BY DATE GUZIK 11/15/89	CHECKED BY DATE PATEL 11/15/89	TITLE <b>TRIFURCON TERMINAL                  CRIMP TYPE, .156 CENTERS                  18 TO 20 AWG WIRE</b>			
		ANGULAR ±1/2°		APPROVED BY DATE LENZ 11/15/89	MATERIAL NO. <b>SEE CHART</b>				
		DRAFT WHERE APPLICABLE MUST REMAIN WITHIN DIMENSIONS		SIZE <b>D</b>		MOLEX INCORPORATED DOCUMENT NO. <b>SD-6838</b>			

19 18 17 16 15 14 13 12 11 10 9 8 7 6 5 4 3 2 1



- NOTES:
1. MATERIAL: SEE LEGEND
  2. FINISH: 909 - OVERALL HOT TIN DIP: .000100/10.00254) MIN.
  3. PRODUCT SPECIFICATION: PS-40-02
  4. PACKAGING SPECIFICATION: PK-6838-001
  5. PART IS FOR USE WITH 18 TO 20 GA. WIRE WITH MAX. INSULATION DIA. OF .110/(2.79), STRIP LENGTH OF .125/.100 / (3.18/2.54).
  6. SEE 7258 SERIES FOR THIS PART WITH CRIMP FOR 22-26 AWG. WIRE.
  7. TERMINAL FOR USE IN 6442 AND 41695 SERIES HOUSINGS.
  8. DIMENSIONS GIVEN ACROSS CENTERLINES ARE SYMMETRICAL ABOUT THOSE CENTERLINES WITHIN HALF THE TOTAL TOLERANCE.
  9. THIS PART CONFORMS TO CLASS B REQUIREMENTS OF COSMETIC SPECIFICATION PS-45499-002.



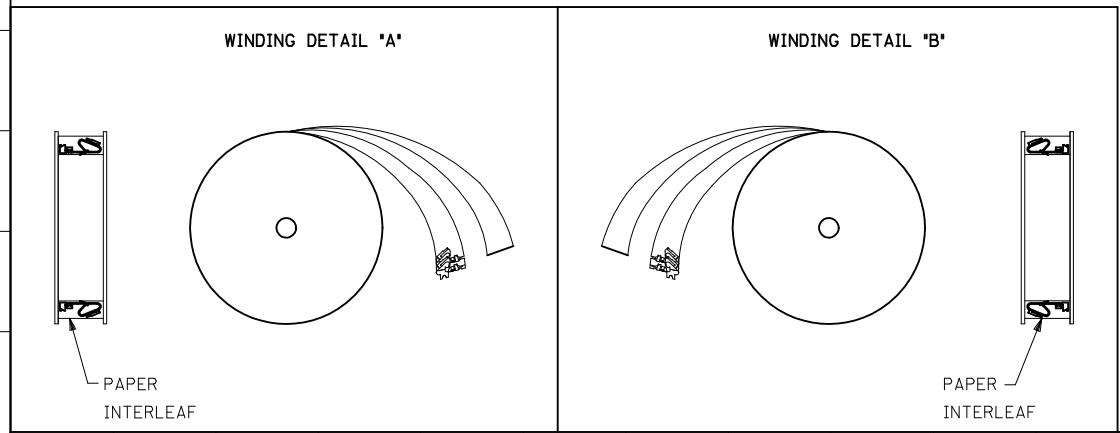
LEGEND: 6838-+ (P909) + +

WINDING  
BLANK= PER DETAIL B

FORM  
BLANK= CHAIN

PLATING PER SDES-88  
SEE NOTE 2

MATERIAL:  
(.27)/.0106 THK  
BLANK=BRASS



UPDATE GEOMETRY IEC NO. UCP2011-0681 DRAWN/KIPPER 2010/09/14 CHYKOS/SSOUSEK 2011/02/23 APPR:FSM/TH 2011/02/25	QUALITY SYMBOLS	GENERAL TOLERANCES (UNLESS SPECIFIED)	DIMENSION STYLE	SCALE	DESIGN UNITS	THIRD ANGLE PROJECTION	
	▽=0	mm INCH	IN/MM	---	INCH	☉	
	▽=0	4 PLACES ± --- ± ---	DRAWN BY	DATE	TITLE		
	▽=0	3 PLACES ± --- ± .010	JJS	07/29/04	TRIFURCON TERMINAL CRIMP TYPE .156 CENTERS 18 TO 20 AWG WIRE		
	2 PLACES ± 0.25 ± .015	CHECKED BY	DATE				
	1 PLACE ± 0.36 ± ---	KSS	07/29/04				
	ANGULAR ±1/2°	APPROVED BY	DATE				
	DRAFT WHERE APPLICABLE MUST REMAIN WITHIN DIMENSIONS	YM	07/29/04				
		MATERIAL NO.	50291639				
		DOCUMENT NO.	SD-6838-001				
		SIZE	D				
		THIS DRAWING CONTAINS INFORMATION THAT IS PROPRIETARY TO MOLEX INCORPORATED AND SHOULD NOT BE USED WITHOUT WRITTEN PERMISSION					
						SHEET NO. 1 OF 1	