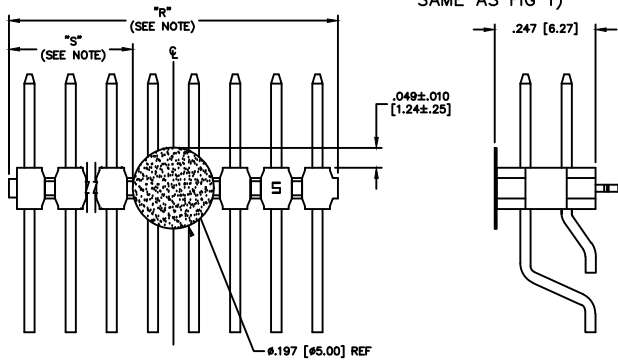


REV CL

NOTE: "R" = USED MEASURED DIMENSION (REF)
 "S" = $\{("R" - .1969 [5.000]) / 2\} \pm .020 [51]$

FIG 5
 -K: POLYIMIDE FILM
 (DIFFERENT AS SHOWN, OTHERWISE SAME AS FIG 1)



DIMENSIONS ARE IN INCHES UNLESS OTHERWISE NOTED		TOLERANCES ARE:	TITLE:	DWG NO:
ONE PLACE DECIMALS ± .1 [3]	THREE PLACE DECIMALS ± .005 [13]	ANGLES ± 2°	TERMINAL STRIP DOUBLE SURFACE MOUNT	TSM-1XX-XX-XXX-XX-XX-XXX-XX SHEET 2 OF 3
TWO PLACE DECIMALS ± .01 [3]	FOUR PLACE DECIMALS ± .0020 [59]			

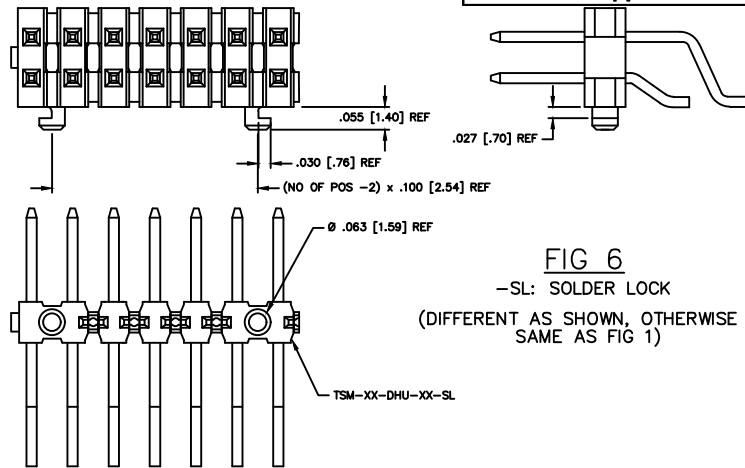
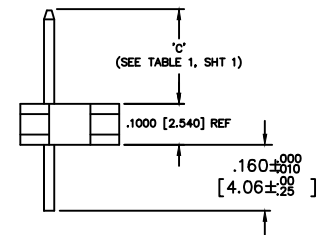
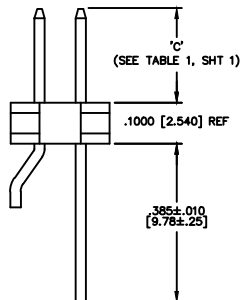


FIG 6
 -SL: SOLDER LOCK
 (DIFFERENT AS SHOWN, OTHERWISE SAME AS FIG 1)



IN-PROCESS 1



IN-PROCESS 2

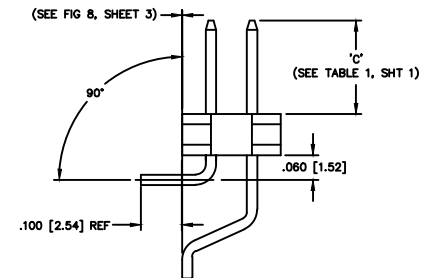


FIG 4
 -MT: MIXED TECHNOLOGY
 (DIFFERENT AS SHOWN, OTHERWISE SAME AS FIG 1)

PROPRIETARY INFO
 THE CONTENTS OF THIS DRAWING ARE THE PROPERTY OF SAMTEC CORPORATION. IT IS TO BE USED ONLY FOR THE PROJECT AND QUANTITY SPECIFIED ON THE DRAWING. IT IS NOT TO BE REPRODUCED, COPIED, OR TRANSMITTED IN ANY FORM OR BY ANY MEANS, ELECTRONIC OR MECHANICAL, INCLUDING PHOTOCOPYING, RECORDING, OR BY ANY INFORMATION STORAGE AND RETRIEVAL SYSTEM, WITHOUT THE WRITTEN PERMISSION OF SAMTEC CORPORATION.

MISC\MKTG
 TSM-1XX-XX-XXX-XX-XX-XXX-XX-MKT2

samtec

520 PARK EAST BLVD. NEW ALBANY, INDIANA 47150
 PHONE (812) 944-8733 P.O. BOX 1147
 CODE 85322

MADE BY
 BRATCHER 7-27-95

TSM-1XX-XX-XXX-XX-XX-XXX-XX
 SHEET 2 OF 3