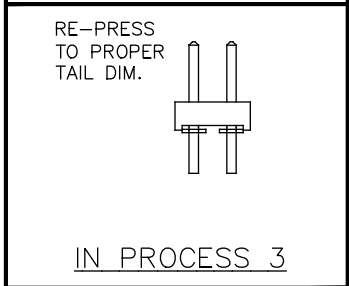
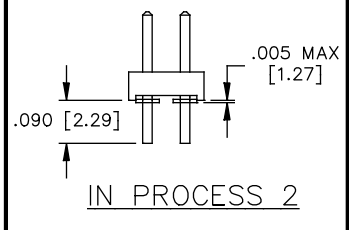
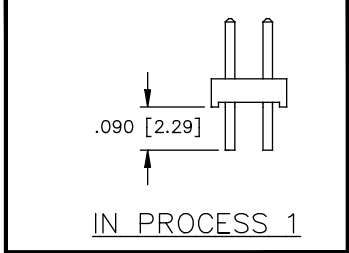
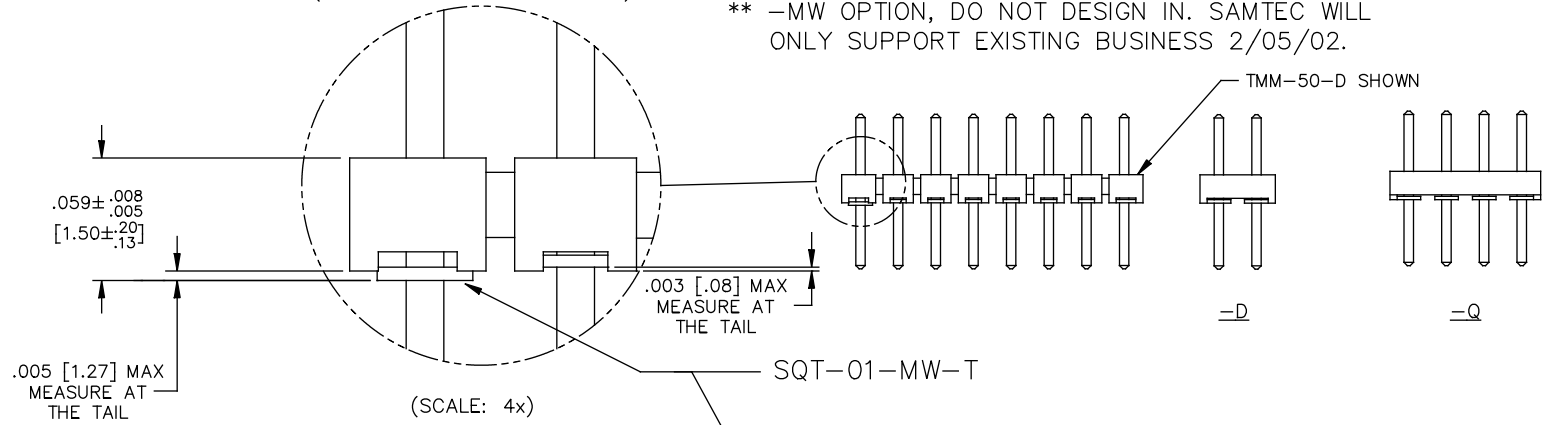


DIMENSIONS ARE IN INCHES		UNLESS OTHERWISE NOTED	
TOLERANCES ARE:		ANGLES ± 2°	
ONE PLACE DECIMALS ±.1[2.5]	THREE PLACE DECIMALS ± .005 [.13]		
TWO PLACE DECIMALS ±.01[.25]	FOUR PLACE DECIMALS ±.0020[.05]		

FIG. 2

** -MW: METAL WASHER (ONE PER POSITION)
 (-D & -Q BODY SPECS ONLY)

** -MW OPTION, DO NOT DESIGN IN. SAMTEC WILL ONLY SUPPORT EXISTING BUSINESS 2/05/02.



IN PROCESS 4
 -T PLATING ONLY

TABLE 3 (-T PLATING ONLY)

LEAD STYLE	NUMBER OF BAND MARKS ALLOWED IN THE POST AREA			
	PIN A	PIN B	PIN C	PIN D
-01	0	0	0	0
-02	0	0	0	0
-03	1	1	1	1
-04	0	0	0	0
-05	0	0	0	0
-06	0	0	0	0

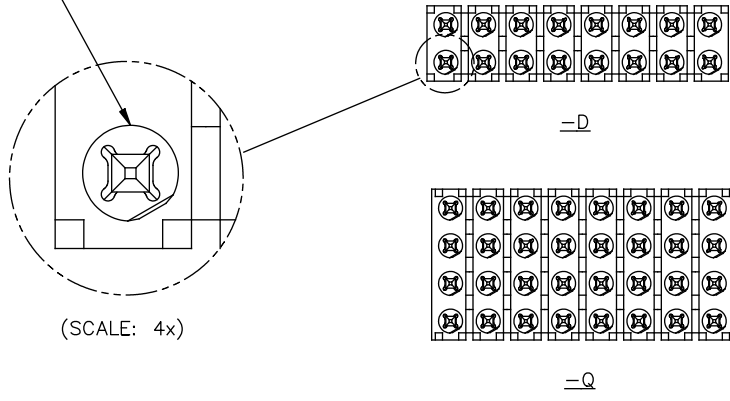
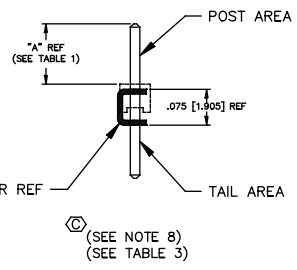
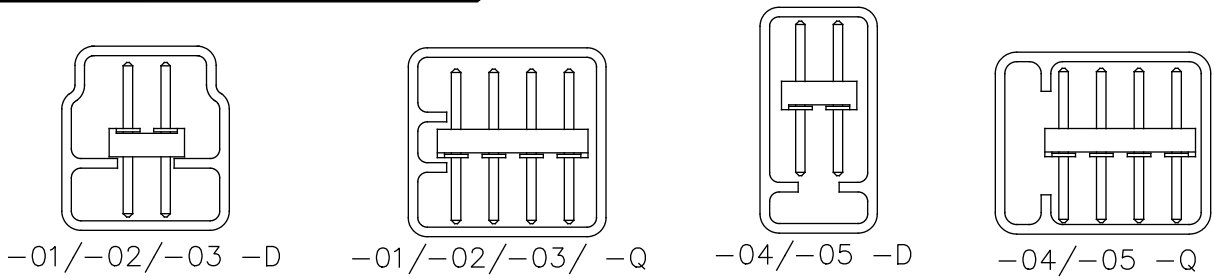


TABLE 2
 -MW OPTION ONLY

SUFFIX	BODY SPEC	TUBE	PLUG (2)
-01	-D	PT-1-24-03-16	TP-03
-02			
-03			
-01	-Q	PT-1-24-03-38	TP-07
-02			
-03			
-04	-Q	PT-1-24-04-09	TP-07
-05			
-04	-D	PT-1-24-04-09	TP-07
-05			

PROPRIETARY NOTE
 THE DOCUMENT CONTAINS CONFIDENTIAL AND PROPRIETARY INFORMATION AND ALL RIGHTS ARE RESERVED. IT IS THE PROPERTY OF SAMTEC AND IS TO BE USED ONLY FOR THE PURPOSES SPECIFIED IN THE ORDER. IT IS TO BE DESTROYED OR RECYCLED IN WHOLE OR IN PART, TO ANY EXTENT, WITHOUT THE EXPRESS WRITTEN CONSENT OF SAMTEC, INC.



samtec
 EXISPROD\ASSEMBLY\2MM TMM-ASM2

520 PARK EAST BULD. NEW ALBANY, INDIANA 47150
 PHONE (812) 944-6733 P.O. BOX 1147
 CODE 55322